

# [MS-RSWSRE2005]: Report Server Web Service Specification for Report Execution: ReportExecution2005

---

## Intellectual Property Rights Notice for Open Specifications Documentation

- **Technical Documentation.** Microsoft publishes Open Specifications documentation for protocols, file formats, languages, standards as well as overviews of the interaction among each of these technologies.
- **Copyrights.** This documentation is covered by Microsoft copyrights. Regardless of any other terms that are contained in the terms of use for the Microsoft website that hosts this documentation, you may make copies of it in order to develop implementations of the technologies described in the Open Specifications and may distribute portions of it in your implementations using these technologies or your documentation as necessary to properly document the implementation. You may also distribute in your implementation, with or without modification, any schema, IDL's, or code samples that are included in the documentation. This permission also applies to any documents that are referenced in the Open Specifications.
- **No Trade Secrets.** Microsoft does not claim any trade secret rights in this documentation.
- **Patents.** Microsoft has patents that may cover your implementations of the technologies described in the Open Specifications. Neither this notice nor Microsoft's delivery of the documentation grants any licenses under those or any other Microsoft patents. However, a given Open Specification may be covered by Microsoft's Open Specification Promise (available here: <http://www.microsoft.com/interop/osp>) or the Community Promise (available here: <http://www.microsoft.com/interop/cp/default.mspx>). If you would prefer a written license, or if the technologies described in the Open Specifications are not covered by the Open Specifications Promise or Community Promise, as applicable, patent licenses are available by contacting [iplg@microsoft.com](mailto:iplg@microsoft.com).
- **Trademarks.** The names of companies and products contained in this documentation may be covered by trademarks or similar intellectual property rights. This notice does not grant any licenses under those rights.
- **Fictitious Names.** The example companies, organizations, products, domain names, e-mail addresses, logos, people, places, and events depicted in this documentation are fictitious. No association with any real company, organization, product, domain name, email address, logo, person, place, or event is intended or should be inferred.

**Reservation of Rights.** All other rights are reserved, and this notice does not grant any rights other than specifically described above, whether by implication, estoppel, or otherwise.

**Tools.** The Open Specifications do not require the use of Microsoft programming tools or programming environments in order for you to develop an implementation. If you have access to Microsoft programming tools and environments you are free to take advantage of them. Certain Open Specifications are intended for use in conjunction with publicly available standard

specifications and network programming art, and assumes that the reader either is familiar with the aforementioned material or has immediate access to it.

## Revision Summary

Date	Revision History	Revision Class	Comments
08/07/2009	0.1	Major	First release.
11/06/2009	0.1.1	Editorial	Revised and edited the technical content.
03/05/2010	1.0	Major	Updated and revised the technical content.
04/21/2010	1.0.1	Editorial	Revised and edited the technical content.
06/04/2010	1.1	Minor	Updated the technical content.
09/03/2010	1.2	Minor	Clarified the meaning of the technical content.

# Contents

<b>1 Introduction</b> .....	<b>4</b>
1.1 Glossary .....	4
1.2 References.....	4
1.2.1 Normative References.....	4
1.2.1.1 Prescriptive API References.....	5
1.2.2 Informative References .....	5
1.3 Protocol Overview (Synopsis).....	5
1.4 Relationship to Other Protocols.....	7
1.5 Prerequisites/Preconditions .....	7
1.6 Applicability Statement.....	8
1.7 Versioning and Capability Negotiation.....	8
1.8 Vendor-Extensible Fields.....	8
1.9 Standards Assignments .....	8
<b>2 Messages</b> .....	<b>9</b>
2.1 Transport.....	9
2.2 Messages.....	9
2.2.1 Namespaces .....	10
2.2.2 Methods.....	11
2.2.3 Types .....	12
2.2.4 SOAP Headers.....	13
<b>3 Appendix A: Full WSDL</b> .....	<b>14</b>
<b>4 Appendix B: Product Behavior</b> .....	<b>52</b>
<b>5 Change Tracking</b> .....	<b>53</b>
<b>6 Index</b> .....	<b>55</b>

# 1 Introduction

This document specifies an API protocol that is provided by the ReportExecution2005 Web service for running and navigating reports on a report server [\[MSDN-SS2008RS\]](#).

## 1.1 Glossary

The following terms are defined in [\[MS-GLOS\]](#):

**SOAP header**  
**SOAP message**  
**WSDL message**  
**WSDL operation**  
**XML namespace**

The following terms are specific to this document:

**report server:** A location on the network to which clients can connect by using SOAP over HTTP or SOAP over HTTPS to publish, manage, and execute reports.

**MAY, SHOULD, MUST, SHOULD NOT, MUST NOT:** These terms (in all caps) are used as described in [\[RFC2119\]](#). All statements of optional behavior use either MAY, SHOULD, or SHOULD NOT.

## 1.2 References

### 1.2.1 Normative References

We conduct frequent surveys of the normative references to assure their continued availability. If you have any issue with finding a normative reference, please contact [dochelp@microsoft.com](mailto:dochelp@microsoft.com). We will assist you in finding the relevant information. Please check the archive site, <http://msdn2.microsoft.com/en-us/library/E4BD6494-06AD-4aed-9823-445E921C9624>, as an additional source.

[RFC2119] Bradner, S., "Key words for use in RFCs to Indicate Requirement Levels", BCP 14, RFC 2119, March 1997, <http://www.ietf.org/rfc/rfc2119.txt>

[RFC2616] Fielding, R., Gettys, J., Mogul, J., et al., "Hypertext Transfer Protocol -- HTTP/1.1", RFC 2616, June 1999, <http://www.ietf.org/rfc/rfc2616.txt>

[RFC2818] Rescorla, E., "HTTP Over TLS", RFC 2818, May 2000, <http://www.ietf.org/rfc/rfc2818.txt>

[SOAP1.1] Box, D., Ehnebuske, D., Kakivaya, G., Layman, A., Mendelsohn, N., Nielsen, H. F., Thatte, S., and Winer, D., "Simple Object Access Protocol (SOAP) 1.1", May 2000, <http://www.w3.org/TR/2000/NOTE-SOAP-20000508/>

[SOAP1.2] Gudgin, M., Hadley, M., Mendelsohn, N., Moreau, J.J., Nielsen, H. F., Karmarkar, A., and Lafon, Y., "SOAP Version 1.2 Part 1: Messaging Framework (Second Edition)", W3C Recommendation 27, April 2007, <http://www.w3.org/TR/soap12-part1/>

[WSDL] Christensen, E., Curbera, F., Meredith, G., and Weerawarana, S., "Web Services Description Language (WSDL) 1.1", W3C Note, March 2001, <http://www.w3.org/TR/2001/NOTE-wsdl-20010315>

[XMLNS3] World Wide Web Consortium, "Namespaces in XML 1.0 (Third Edition)", December 2009, <http://www.w3.org/TR/2009/REC-xml-names-20091208/>

[XMLSCHEMA1] Thompson, H.S., Ed., Beech, D., Ed., Maloney, M., Ed., and Mendelsohn, N., Ed., "XML Schema Part 1: Structures", W3C Recommendation, May 2001, <http://www.w3.org/TR/2001/REC-xmlschema-1-20010502/>

[XMLSCHEMA2] Biron, P.V., Ed. and Malhotra, A., Ed., "XML Schema Part 2: Datatypes", W3C Recommendation, May 2001, <http://www.w3.org/TR/2001/REC-xmlschema-2-20010502/>

### 1.2.1.1 Prescriptive API References

[MSDN-SQLRSRE2005] Microsoft Corporation, "ReportExecution2005 Namespace", <http://msdn.microsoft.com/en-us/library/reportexecution2005.aspx>

### 1.2.2 Informative References

[MS-GLOS] Microsoft Corporation, "[Windows Protocols Master Glossary](#)", March 2007.

[MSDN-RESExeHdr] Microsoft Corporation, "ExecutionHeader Class", SQL Server Books Online, <http://msdn.microsoft.com/en-us/library/reportexecution2005.executionheader.aspx>

[MSDN-RESExeInfo] Microsoft Corporation, "ExecutionInfo Class", SQL Server Books Online, <http://msdn.microsoft.com/en-us/library/reportexecution2005.executioninfo.aspx>

[MSDN-RESMethods] Microsoft Corporation, "ReportExecutionService Methods", [http://msdn.microsoft.com/en-us/library/reportexecution2005.reportexecutionservice\\_methods.aspx](http://msdn.microsoft.com/en-us/library/reportexecution2005.reportexecutionservice_methods.aspx).

[MSDN-SoapHeader] Microsoft Corporation, "SoapHeader Class", .NET Framework Class Library, <http://msdn.microsoft.com/en-us/library/system.web.services.protocols.soapheader.aspx>

[MSDN-SSMode] Microsoft Corporation, "Planning a Deployment Mode", SQL Server 2008 Books Online, <http://msdn.microsoft.com/en-us/library/bb326345.aspx>

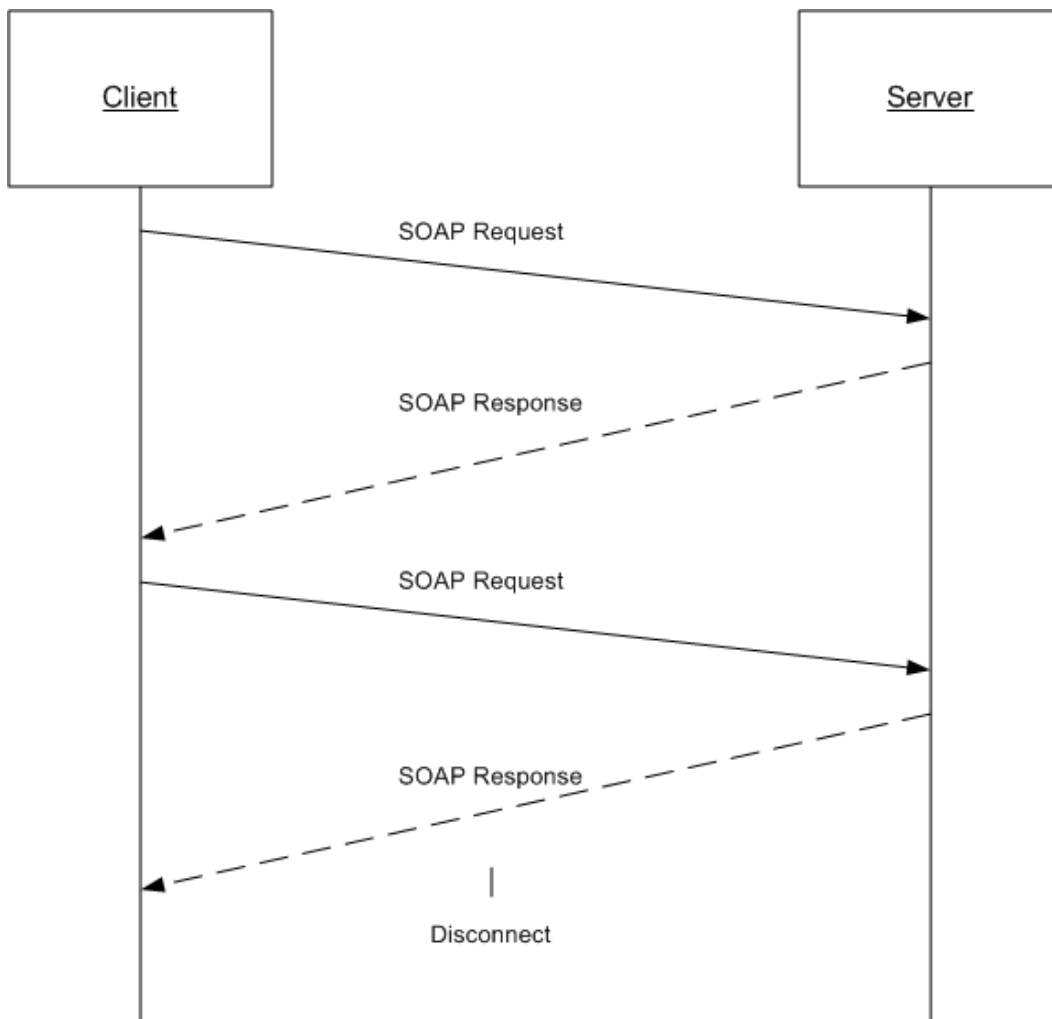
[MSDN-SS2008RS] Microsoft Corporation, "SQL Server Reporting Services", SQL Server 2008 Books Online, <http://msdn.microsoft.com/en-us/library/ms159106.aspx>

## 1.3 Protocol Overview (Synopsis)

The ReportExecution2005 Web service protocol that is described in this document provides methods for running and navigating reports and for customizing report processing and rendering on a **report server** [\[MSDN-SQL2008RS\]](#) that is configured for SharePoint integrated mode or native mode [\[MSDN-SSMode\]](#).

Typically, the client establishes a connection with the server. After the connection is established by using the HTTP [\[RFC2616\]](#) or HTTPS [\[RFC2818\]](#) protocol, **SOAP messages** (see [\[SOAP1.1\]](#) and [\[SOAP1.2\]](#)) <1> are used to communicate between the client and the server.

The ReportExecution2005 Web service protocol uses the security facilities that are built into HTTP or HTTPS for authentication and identification and for channel encryption negotiation. The protocol uses the facilities that are built into SOAP for specification of requests from client to server and for returning data from the server to the client. The following diagram depicts a (simplified) typical flow of communication in the protocol.



**Figure 1: Communication flow for ReportExecution2005**

Each method in the protocol is a SOAP operation that accepts a set of parameters as a SOAP request and returns a set of values as a SOAP response. The client sends a request to the server through a SOAP request message, and the server sends return values to the client through a SOAP response message.

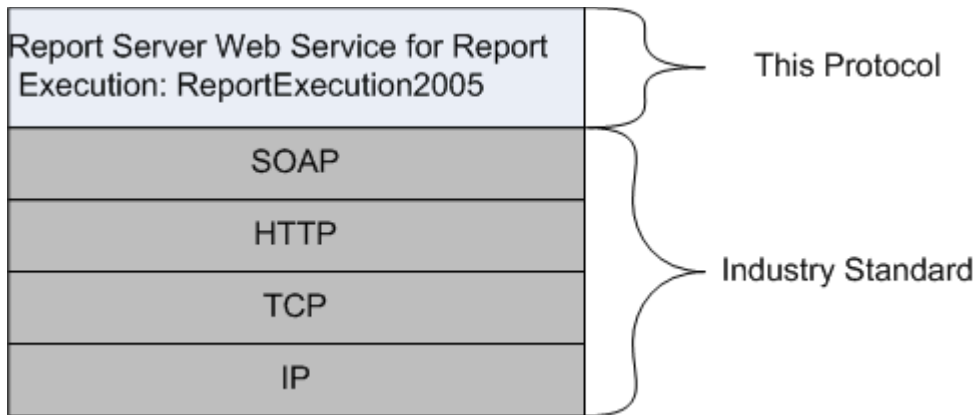
The following procedure describes a simple example client/server exchange for running a report:

1. The client calls the **LoadReport** method and passes in the full path of the report in the *Report* parameter of the method.
2. The server loads the report, prepares it for execution, and establishes a report execution session. The server outputs an **ExecutionHeader** [\[MSDN-RESExeHdr\]](#) SOAP header that contains information for the session and then returns an **ExecutionInfo** [\[MSDN-RESExeInfo\]](#) object that contains information for the loaded report.
3. The client calls the **Render** method and passes in the format in which to render the report in the *Format* parameter of the method. The client then sends back the **ExecutionHeader** SOAP header that it received from the server earlier.

4. The server returns a Byte[] array of the report in the specified format.

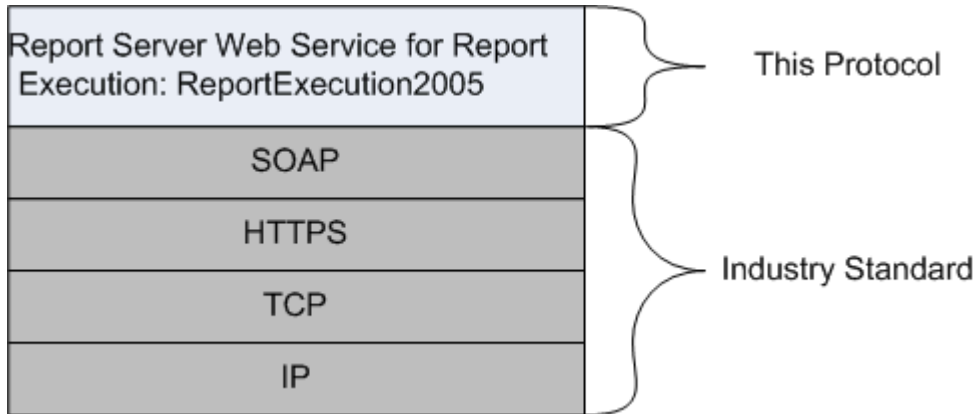
### 1.4 Relationship to Other Protocols

The ReportExecution2005 Web protocol uses SOAP over HTTP as shown in the following layering diagram.



**Figure 2: SOAP over HTTP**

The ReportExecution2005 Web protocol uses SOAP over HTTPS as shown in the following layering diagram.



**Figure 3: SOAP over HTTPS**

### 1.5 Prerequisites/Preconditions

The ReportExecution2005 Web service operates against a URL. The URL is identified by protocol clients. The protocol server endpoint is formed by appending "/ReportExecution2005.asmx" to the URL, as in the following example:

`http://www.contoso.com/ReportServer/ReportExecution2005.asmx`

It is assumed that authentication has been performed by the underlying protocol. The account that accesses this Web service is assigned with proper permissions to the site and its items.

## 1.6 Applicability Statement

The ReportExecution2005 Web service protocol enables client applications to run and navigate reports on a report server over SOAP.

## 1.7 Versioning and Capability Negotiation

This document covers versioning issues in the following areas:

**Supported Transports:** The ReportExecution2005 Web service protocol uses multiple transports with SOAP as described in section [2.1](#).

## 1.8 Vendor-Extensible Fields

None.

## 1.9 Standards Assignments

None.



## 2 Messages

### 2.1 Transport

Protocol servers MUST support SOAP over HTTP and MUST support SOAP over HTTPS for securing communication with clients.

Protocol messages MUST be formatted as specified in section 4 of [\[SOAP1.1\]](#) or section 3 of [\[SOAP1.2\].<2>](#)

### 2.2 Messages

This section defines the messages that are used by this protocol. The syntax of the definitions uses XML Schema as defined in [\[XMLSCHEMA1\]](#) and [\[XMLSCHEMA2\]](#), and it uses Web Services Description Language (WSDL) as defined in [\[WSDL\]](#).

The following information describes the steps by which the API is mapped to structures and operations in the ReportExecution2005 Web service [\[MSDN-SQLRSRE2005\]](#).

Each class in the ReportExecution2005 Web service, except the class that is derived from **System.Web.Services.Protocols.SoapHttpClientProtocol**, becomes one WSDL type. The following rules apply:

- Non-inherited public properties become elements in the type, with the following exceptions and additional rules:
  - Any property named *AnyAttr* becomes the XSD **anyAttribute** in the type rather than an element.
  - If the name of a property is the concatenation of the name of another property in the same class and "Specified", no element is created for the former property in the type. The **minOccurs** attribute of the element for the latter property is 0. For other properties, the **minOccurs** attribute is 1 unless the API data type is **String**, **Byte[]**, or an array type, in which case the **minOccurs** attribute is 0.
  - The **maxOccurs** attribute of the element is 1 for nonarray types and "unbounded" for array types.
- If the class inherits another class in the Web service, the WSDL type of the inherited class becomes an XSD extension in the WSDL type corresponding to the inheriting class.

Each enumeration in the Web service becomes one WSDL type as an XSD enumeration.

Each class that inherits **System.Web.Services.Protocols.SoapHeader** [\[MSDN-SoapHeader\]](#) becomes one SOAP header.

Each method in the class that is derived from **System.Web.Services.Protocols.SoapHttpClientProtocol** that is not derived from a base method in a base class or from an interface becomes one **WSDL operation** with a corresponding SOAP operation, a request **WSDL message**, a response WSDL message, and the corresponding WSDL types. The following rules apply:

- Out parameters and return values of the method become elements in the WSDL type for the response WSDL message.

- Other parameters of the method become elements in the WSDL type for the request WSDL message.
- If the method uses a SOAP header, the WSDL operation contains a WSDL message that has a single part of the WSDL type corresponding to the SOAP header.

An array of a class becomes a WSDL type with an element of the WSDL type corresponding to the class.

The primitive data types that are used by the API are mapped to WSDL XML Schema types as described in the following table.

API primitive data type	WSDL XML Schema type
Byte[]	base64Binary
Boolean	boolean
SByte	byte
Double	double
DateTime	dateTime
Decimal	decimal
Single	float
Int32	int
Int64	long
XmlQualifiedName	QName
Int16	short
String	string
Byte	unsignedByte
UInt32	unsignedInt
UInt64	unsignedLong
UInt16	unsignedShort

The result of this mapping can be found in the full WSDL in [Appendix A](#) of this specification.

### 2.2.1 Namespaces

This specification defines and references various **XML namespaces** by using the mechanisms that are specified in [\[XMLNS3\]](#). Although this specification associates a specific XML namespace prefix for each XML namespace that is used, the choice of any particular XML namespace prefix is implementation-specific and not significant for interoperability.

Prefix	Namespace URI	Reference
soap	<a href="http://schemas.xmlsoap.org/wsdl/soap/">http://schemas.xmlsoap.org/wsdl/soap/</a>	<a href="#">[WSDL]</a>

Prefix	Namespace URI	Reference
tns	http://schemas.microsoft.com/sqlserver/2005/06/30/reporting/reportingservices	Defined in this document
s	http://www.w3.org/2001/XMLSchema	<a href="#">[XMLSCHEMA1]</a>
soap12	http://schemas.xmlsoap.org/wsdl/soap12/	<a href="#">[WSDL]</a>
wsdl	http://schemas.xmlsoap.org/wsdl	<a href="#">[WSDL]</a>

## 2.2.2 Methods

The following table summarizes the set of method definitions that are defined by this specification. ReportExecution: ReportExecution2005 methods are defined in detail in [\[MSDN-RESMethods\]](#).

Method	Description
<b>FindString</b>	Returns the logical page number of the next occurrence of the specified string.
<b>GetDocumentMap</b>	Returns a representation of the document map for the execution.
<b>GetExecutionInfo</b>	Returns information about the report execution.
<b>GetExecutionInfo2</b>	Returns information about the report execution.
<b>GetRenderResource</b>	Returns the resource for a specified rendering extension format.
<b>ListRenderingExtensions</b>	Returns a list of rendering extensions.
<b>ListSecureMethods</b>	Returns a list of SOAP methods that require a secure (SSL) connection when invoked.
<b>LoadDrillthroughTarget</b>	Creates a report execution from a drillthrough action.
<b>LoadDrillthroughTarget2</b>	Creates a report execution from a drillthrough action.
<b>LoadReport</b>	Loads a report from the report server into a new execution.
<b>LoadReport2</b>	Loads a report from the report server into a new execution.
<b>LoadReportDefinition</b>	Creates a report execution from a report definition that is supplied by the client.
<b>LoadReportDefinition2</b>	Creates a report execution from a report definition that is supplied by the client.
<b>Logoff</b>	Logs off the current user who is making Web service requests.
<b>LogonUser</b>	Logs on a user and authenticates a user request to the Report Server Web service.
<b>NavigateBookmark</b>	Navigates to a specific bookmark in the report.
<b>NavigateDocumentMap</b>	Navigates to a specific section of the report.
<b>Render</b>	Processes a specific report and renders it in the specified format.

Method	Description
<b>Render2</b>	Processes a specific report and renders it in the specified format.
<b>RenderStream</b>	Returns a secondary rendering stream that is associated with a processed report.
<b>ResetExecution</b>	Resets the current report execution by clearing the snapshot and resetting the session state.
<b>ResetExecution2</b>	Resets the current report execution by clearing the snapshot and resetting the session state.
<b>SetExecutionCredentials</b>	Sets the credentials that are associated with the current report execution.
<b>SetExecutionCredentials2</b>	Sets the credentials that are associated with the current report execution.
<b>SetExecutionParameters</b>	Sets and validates parameter values that are associated with the current report execution.
<b>SetExecutionParameters2</b>	Sets and validates parameter values that are associated with the current report execution.
<b>Sort</b>	Applies or removes a sort for the execution based on a user sort action.
<b>Sort2</b>	Applies or removes a sort for the execution based on a user sort action.
<b>ToggleItem</b>	Toggles the show/hide item in a report.

### 2.2.3 Types

The following table summarizes the set of type definitions that are defined by this specification. ReportExecution: ReportExecution2005 types are defined in detail in [\[MSDN-SQLRSRE2005\]](#).

Type	Description
<b>DataSourceCredentials</b>	Represents data source credentials.
<b>DataSourcePrompt</b>	Represents the name of a data source and the prompt to display to a user.
<b>DocumentMapNode</b>	Represents a single node in the document map.
<b>ExecutionInfo</b>	Describes the state of the current report execution.
<b>ExecutionInfo2</b>	Describes the state of the current report execution.
<b>Extension</b>	Represents an extension that is registered with the report server.
<b>ExtensionTypeEnum</b>	Describes the type of extension that is registered with the report server.
<b>PageCountMode</b>	Specifies how the page count is processed.
<b>PageSettings</b>	Represents the page settings for a report.
<b>ParameterStateEnum</b>	Specifies the state of a parameter.
<b>ParameterTypeEnum</b>	Specifies the data type of a parameter.

Type	Description
<b>ParameterValue</b>	Represents data that is used in parameterized reports or in delivery extension settings.
<b>ParameterValueOrFieldReference</b>	Represents a user-supplied value or a field name that represents the value of a parameter.
<b>ReportMargins</b>	Represents the page margins for a report.
<b>ReportPaperSize</b>	Represents the paper size of a report page. This value is read-only.
<b>ReportParameter</b>	Represents a report parameter.
<b>SortDirectionEnum</b>	Specifies sort directions.
<b>ValidValue</b>	Represents a valid value for an extension setting.
<b>Warning</b>	Represents a list of errors or warnings that are returned when a report is published or processed.

## 2.2.4 SOAP Headers

The following table summarizes the set of SOAP header definitions that are defined by this specification. ReportExecution: ReportExecution2005 SOAP headers are defined in detail in [\[MSDN-SQLRSRE2005\]](#).

SOAP Header	Description
<b>ExecutionHeader</b>	Represents state information for sessions in the report server.
<b>ServerInfoHeader</b>	Represents information about the report server.
<b>TrustedUserHeader</b>	Supports the SQL Server infrastructure and is not intended to be used directly from code.

### 3 Appendix A: Full WSDL

For ease of implementation, the full WSDL is provided here.

```
<?xml version="1.0" encoding="utf-8"?>
<wsdl:definitions xmlns:soap="http://schemas.xmlsoap.org/wsdl/soap/"
xmlns:tns="http://schemas.microsoft.com/sqlserver/2005/06/30/reporting/reportingservices"
xmlns:s="http://www.w3.org/2001/XMLSchema"
xmlns:soap12="http://schemas.xmlsoap.org/wsdl/soap12/"
targetNamespace="http://schemas.microsoft.com/sqlserver/2005/06/30/reporting/reportingservice
s" xmlns:wsdl="http://schemas.xmlsoap.org/wsdl/">
  <wsdl:documentation xmlns:wsdl="http://schemas.xmlsoap.org/wsdl/">The Reporting Services
  Execution Service enables report execution</wsdl:documentation>
  <wsdl:types>
    <s:schema elementFormDefault="qualified"
targetNamespace="http://schemas.microsoft.com/sqlserver/2005/06/30/reporting/reportingservice
s">
      <s:element name="ListSecureMethods">
        <s:complexType />
      </s:element>
      <s:element name="ListSecureMethodsResponse">
        <s:complexType>
          <s:sequence>
            <s:element minOccurs="0" maxOccurs="1" name="ListSecureMethodsResult"
type="tns:ArrayOfString" />
          </s:sequence>
        </s:complexType>
      </s:element>
      <s:complexType name="ArrayOfString">
        <s:sequence>
          <s:element minOccurs="0" maxOccurs="unbounded" name="string" nillable="true"
type="s:string" />
        </s:sequence>
      </s:complexType>
      <s:element name="TrustedUserHeader" type="tns:TrustedUserHeader" />
      <s:complexType name="TrustedUserHeader">
        <s:sequence>
          <s:element minOccurs="0" maxOccurs="1" name="UserName" type="s:string" />
          <s:element minOccurs="0" maxOccurs="1" name="UserToken" type="s:base64Binary" />
        </s:sequence>
        <s:anyAttribute />
      </s:complexType>
      <s:element name="ServerInfoHeader" type="tns:ServerInfoHeader" />
      <s:complexType name="ServerInfoHeader">
        <s:sequence>
          <s:element minOccurs="0" maxOccurs="1" name="ReportServerVersionNumber"
type="s:string" />
          <s:element minOccurs="0" maxOccurs="1" name="ReportServerEdition" type="s:string"
/>
          <s:element minOccurs="0" maxOccurs="1" name="ReportServerVersion" type="s:string"
/>
          <s:element minOccurs="0" maxOccurs="1" name="ReportServerDateTime" type="s:string"
/>
        </s:sequence>
        <s:anyAttribute />
      </s:complexType>
      <s:element name="LoadReport">
        <s:complexType>
```

```

        <s:sequence>
            <s:element minOccurs="0" maxOccurs="1" name="Report" type="s:string" />
            <s:element minOccurs="0" maxOccurs="1" name="HistoryID" type="s:string" />
        </s:sequence>
    </s:complexType>
</s:element>
<s:element name="LoadReportResponse">
    <s:complexType>
        <s:sequence>
            <s:element minOccurs="0" maxOccurs="1" name="executionInfo"
type="tns:ExecutionInfo" />
        </s:sequence>
    </s:complexType>
</s:element>
<s:complexType name="ExecutionInfo">
    <s:sequence>
        <s:element minOccurs="1" maxOccurs="1" name="HasSnapshot" type="s:boolean" />
        <s:element minOccurs="1" maxOccurs="1" name="NeedsProcessing" type="s:boolean" />
        <s:element minOccurs="1" maxOccurs="1" name="AllowQueryExecution" type="s:boolean"
/>
        <s:element minOccurs="1" maxOccurs="1" name="CredentialsRequired" type="s:boolean"
/>
        <s:element minOccurs="1" maxOccurs="1" name="ParametersRequired" type="s:boolean"
/>
        <s:element minOccurs="1" maxOccurs="1" name="ExpirationDateTime" type="s:dateTime"
/>
        <s:element minOccurs="1" maxOccurs="1" name="ExecutionDateTime" type="s:dateTime"
/>
        <s:element minOccurs="1" maxOccurs="1" name="NumPages" type="s:int" />
        <s:element minOccurs="0" maxOccurs="1" name="Parameters"
type="tns:ArrayOfReportParameter" />
        <s:element minOccurs="0" maxOccurs="1" name="DataSourcePrompts"
type="tns:ArrayOfDataSourcePrompt" />
        <s:element minOccurs="1" maxOccurs="1" name="HasDocumentMap" type="s:boolean" />
        <s:element minOccurs="0" maxOccurs="1" name="ExecutionID" type="s:string" />
        <s:element minOccurs="0" maxOccurs="1" name="ReportPath" type="s:string" />
        <s:element minOccurs="0" maxOccurs="1" name="HistoryID" type="s:string" />
        <s:element minOccurs="0" maxOccurs="1" name="ReportPageSettings"
type="tns:PageSettings" />
        <s:element minOccurs="1" maxOccurs="1" name="AutoRefreshInterval" type="s:int" />
    </s:sequence>
</s:complexType>
<s:complexType name="ArrayOfReportParameter">
    <s:sequence>
        <s:element minOccurs="0" maxOccurs="unbounded" name="ReportParameter"
nillable="true" type="tns:ReportParameter" />
    </s:sequence>
</s:complexType>
<s:complexType name="ReportParameter">
    <s:sequence>
        <s:element minOccurs="0" maxOccurs="1" name="Name" type="s:string" />
        <s:element minOccurs="0" maxOccurs="1" name="Type" type="tns:ParameterTypeEnum" />
        <s:element minOccurs="0" maxOccurs="1" name="Nullable" type="s:boolean" />
        <s:element minOccurs="0" maxOccurs="1" name="AllowBlank" type="s:boolean" />
        <s:element minOccurs="0" maxOccurs="1" name="MultiValue" type="s:boolean" />
        <s:element minOccurs="0" maxOccurs="1" name="QueryParameter" type="s:boolean" />
        <s:element minOccurs="0" maxOccurs="1" name="Prompt" type="s:string" />
        <s:element minOccurs="0" maxOccurs="1" name="PromptUser" type="s:boolean" />
        <s:element minOccurs="0" maxOccurs="1" name="Dependencies"
type="tns:ArrayOfString1" />
    </s:sequence>
</s:complexType>

```

```

        <s:element minOccurs="0" maxOccurs="1" name="ValidValuesQueryBased"
type="s:boolean" />
        <s:element minOccurs="0" maxOccurs="1" name="ValidValues"
type="tns:ArrayOfValidValue" />
        <s:element minOccurs="0" maxOccurs="1" name="DefaultValuesQueryBased"
type="s:boolean" />
        <s:element minOccurs="0" maxOccurs="1" name="DefaultValues"
type="tns:ArrayOfString2" />
        <s:element minOccurs="0" maxOccurs="1" name="State" type="tns:ParameterStateEnum"
/>
        <s:element minOccurs="0" maxOccurs="1" name="ErrorMessage" type="s:string" />
    </s:sequence>
</s:complexType>
<s:simpleType name="ParameterTypeEnum">
    <s:restriction base="s:string">
        <s:enumeration value="Boolean" />
        <s:enumeration value="DateTime" />
        <s:enumeration value="Integer" />
        <s:enumeration value="Float" />
        <s:enumeration value="String" />
    </s:restriction>
</s:simpleType>
<s:complexType name="ArrayOfString1">
    <s:sequence>
        <s:element minOccurs="0" maxOccurs="unbounded" name="Dependency" nillable="true"
type="s:string" />
    </s:sequence>
</s:complexType>
<s:complexType name="ArrayOfValidValue">
    <s:sequence>
        <s:element minOccurs="0" maxOccurs="unbounded" name="ValidValue" nillable="true"
type="tns:ValidValue" />
    </s:sequence>
</s:complexType>
<s:complexType name="ValidValue">
    <s:sequence>
        <s:element minOccurs="0" maxOccurs="1" name="Label" type="s:string" />
        <s:element minOccurs="0" maxOccurs="1" name="Value" type="s:string" />
    </s:sequence>
</s:complexType>
<s:complexType name="ArrayOfString2">
    <s:sequence>
        <s:element minOccurs="0" maxOccurs="unbounded" name="Value" nillable="true"
type="s:string" />
    </s:sequence>
</s:complexType>
<s:simpleType name="ParameterStateEnum">
    <s:restriction base="s:string">
        <s:enumeration value="HasValidValue" />
        <s:enumeration value="MissingValidValue" />
        <s:enumeration value="HasOutstandingDependencies" />
        <s:enumeration value="DynamicValuesUnavailable" />
    </s:restriction>
</s:simpleType>
<s:complexType name="ArrayOfDataSourcePrompt">
    <s:sequence>
        <s:element minOccurs="0" maxOccurs="unbounded" name="DataSourcePrompt"
nillable="true" type="tns:DataSourcePrompt" />
    </s:sequence>
</s:complexType>

```



```

<s:complexType name="DataSourcePrompt">
  <s:sequence>
    <s:element minOccurs="0" maxOccurs="1" name="Name" type="s:string" />
    <s:element minOccurs="0" maxOccurs="1" name="DataSourceID" type="s:string" />
    <s:element minOccurs="0" maxOccurs="1" name="Prompt" type="s:string" />
  </s:sequence>
</s:complexType>
<s:complexType name="PageSettings">
  <s:sequence>
    <s:element minOccurs="0" maxOccurs="1" name="PaperSize" type="tns:ReportPaperSize"
/>
    <s:element minOccurs="0" maxOccurs="1" name="Margins" type="tns:ReportMargins" />
  </s:sequence>
</s:complexType>
<s:complexType name="ReportPaperSize">
  <s:sequence>
    <s:element minOccurs="1" maxOccurs="1" name="Height" type="s:double" />
    <s:element minOccurs="1" maxOccurs="1" name="Width" type="s:double" />
  </s:sequence>
</s:complexType>
<s:complexType name="ReportMargins">
  <s:sequence>
    <s:element minOccurs="1" maxOccurs="1" name="Top" type="s:double" />
    <s:element minOccurs="1" maxOccurs="1" name="Bottom" type="s:double" />
    <s:element minOccurs="1" maxOccurs="1" name="Left" type="s:double" />
    <s:element minOccurs="1" maxOccurs="1" name="Right" type="s:double" />
  </s:sequence>
</s:complexType>
<s:element name="ExecutionHeader" type="tns:ExecutionHeader" />
<s:complexType name="ExecutionHeader">
  <s:sequence>
    <s:element minOccurs="0" maxOccurs="1" name="ExecutionID" type="s:string" />
  </s:sequence>
  <s:anyAttribute />
</s:complexType>
<s:element name="LoadReport2">
  <s:complexType>
    <s:sequence>
      <s:element minOccurs="0" maxOccurs="1" name="Report" type="s:string" />
      <s:element minOccurs="0" maxOccurs="1" name="HistoryID" type="s:string" />
    </s:sequence>
  </s:complexType>
</s:element>
<s:element name="LoadReport2Response">
  <s:complexType>
    <s:sequence>
      <s:element minOccurs="0" maxOccurs="1" name="executionInfo"
type="tns:ExecutionInfo2" />
    </s:sequence>
  </s:complexType>
</s:element>
<s:complexType name="ExecutionInfo2">
  <s:complexContent mixed="false">
    <s:extension base="tns:ExecutionInfo">
      <s:sequence>
        <s:element minOccurs="1" maxOccurs="1" name="PageCountMode"
type="tns:PageCountMode" />
      </s:sequence>
    </s:extension>
  </s:complexContent>
</s:complexType>

```

```

    </s:complexContent>
  </s:complexType>
  <s:simpleType name="PageCountMode">
    <s:restriction base="s:string">
      <s:enumeration value="Actual" />
      <s:enumeration value="Estimate" />
    </s:restriction>
  </s:simpleType>
  <s:element name="LoadReportDefinition">
    <s:complexType>
      <s:sequence>
        <s:element minOccurs="0" maxOccurs="1" name="Definition" type="s:base64Binary" />
      </s:sequence>
    </s:complexType>
  </s:element>
  <s:element name="LoadReportDefinitionResponse">
    <s:complexType>
      <s:sequence>
        <s:element minOccurs="0" maxOccurs="1" name="executionInfo"
type="tns:ExecutionInfo" />
        <s:element minOccurs="0" maxOccurs="1" name="warnings" type="tns:ArrayOfWarning"
/>
      </s:sequence>
    </s:complexType>
  </s:element>
  <s:complexType name="ArrayOfWarning">
    <s:sequence>
      <s:element minOccurs="0" maxOccurs="unbounded" name="Warning" nillable="true"
type="tns:Warning" />
    </s:sequence>
  </s:complexType>
  <s:complexType name="Warning">
    <s:sequence>
      <s:element minOccurs="0" maxOccurs="1" name="Code" type="s:string" />
      <s:element minOccurs="0" maxOccurs="1" name="Severity" type="s:string" />
      <s:element minOccurs="0" maxOccurs="1" name="ObjectName" type="s:string" />
      <s:element minOccurs="0" maxOccurs="1" name="ObjectType" type="s:string" />
      <s:element minOccurs="0" maxOccurs="1" name="Message" type="s:string" />
    </s:sequence>
  </s:complexType>
  <s:element name="LoadReportDefinition2">
    <s:complexType>
      <s:sequence>
        <s:element minOccurs="0" maxOccurs="1" name="Definition" type="s:base64Binary" />
      </s:sequence>
    </s:complexType>
  </s:element>
  <s:element name="LoadReportDefinition2Response">
    <s:complexType>
      <s:sequence>
        <s:element minOccurs="0" maxOccurs="1" name="executionInfo"
type="tns:ExecutionInfo2" />
        <s:element minOccurs="0" maxOccurs="1" name="warnings" type="tns:ArrayOfWarning"
/>
      </s:sequence>
    </s:complexType>
  </s:element>
  <s:element name="SetExecutionCredentials">
    <s:complexType>

```

```

        <s:sequence>
            <s:element minOccurs="0" maxOccurs="1" name="Credentials"
type="tns:ArrayOfDataSourceCredentials" />
        </s:sequence>
    </s:complexType>
</s:element>
<s:complexType name="ArrayOfDataSourceCredentials">
    <s:sequence>
        <s:element minOccurs="0" maxOccurs="unbounded" name="DataSourceCredentials"
nillable="true" type="tns:DataSourceCredentials" />
    </s:sequence>
</s:complexType>
<s:complexType name="DataSourceCredentials">
    <s:sequence>
        <s:element minOccurs="0" maxOccurs="1" name="DataSourceName" type="s:string" />
        <s:element minOccurs="0" maxOccurs="1" name="UserName" type="s:string" />
        <s:element minOccurs="0" maxOccurs="1" name="Password" type="s:string" />
    </s:sequence>
</s:complexType>
<s:element name="SetExecutionCredentialsResponse">
    <s:complexType>
        <s:sequence>
            <s:element minOccurs="0" maxOccurs="1" name="executionInfo"
type="tns:ExecutionInfo" />
        </s:sequence>
    </s:complexType>
</s:element>
<s:element name="SetExecutionCredentials2">
    <s:complexType>
        <s:sequence>
            <s:element minOccurs="0" maxOccurs="1" name="Credentials"
type="tns:ArrayOfDataSourceCredentials" />
        </s:sequence>
    </s:complexType>
</s:element>
<s:element name="SetExecutionCredentials2Response">
    <s:complexType>
        <s:sequence>
            <s:element minOccurs="0" maxOccurs="1" name="executionInfo"
type="tns:ExecutionInfo2" />
        </s:sequence>
    </s:complexType>
</s:element>
<s:element name="SetExecutionParameters">
    <s:complexType>
        <s:sequence>
            <s:element minOccurs="0" maxOccurs="1" name="Parameters"
type="tns:ArrayOfParameterValue" />
            <s:element minOccurs="0" maxOccurs="1" name="ParameterLanguage" type="s:string"
/>
        </s:sequence>
    </s:complexType>
</s:element>
<s:complexType name="ArrayOfParameterValue">
    <s:sequence>
        <s:element minOccurs="0" maxOccurs="unbounded" name="ParameterValue"
nillable="true" type="tns:ParameterValue" />
    </s:sequence>
</s:complexType>
<s:complexType name="ParameterValue">

```

```

    <s:complexContent mixed="false">
      <s:extension base="tns:ParameterValueOrFieldReference">
        <s:sequence>
          <s:element minOccurs="0" maxOccurs="1" name="Name" type="s:string" />
          <s:element minOccurs="0" maxOccurs="1" name="Value" type="s:string" />
          <s:element minOccurs="0" maxOccurs="1" name="Label" type="s:string" />
        </s:sequence>
      </s:extension>
    </s:complexContent>
  </s:complexType>
  <s:complexType name="ParameterValueOrFieldReference" />
  <s:element name="SetExecutionParametersResponse">
    <s:complexType>
      <s:sequence>
        <s:element minOccurs="0" maxOccurs="1" name="executionInfo"
type="tns:ExecutionInfo" />
      </s:sequence>
    </s:complexType>
  </s:element>
  <s:element name="SetExecutionParameters2">
    <s:complexType>
      <s:sequence>
        <s:element minOccurs="0" maxOccurs="1" name="Parameters"
type="tns:ArrayOfParameterValue" />
        <s:element minOccurs="0" maxOccurs="1" name="ParameterLanguage" type="s:string"
/>
      </s:sequence>
    </s:complexType>
  </s:element>
  <s:element name="SetExecutionParameters2Response">
    <s:complexType>
      <s:sequence>
        <s:element minOccurs="0" maxOccurs="1" name="executionInfo"
type="tns:ExecutionInfo2" />
      </s:sequence>
    </s:complexType>
  </s:element>
  <s:element name="ResetExecution">
    <s:complexType />
  </s:element>
  <s:element name="ResetExecutionResponse">
    <s:complexType>
      <s:sequence>
        <s:element minOccurs="0" maxOccurs="1" name="executionInfo"
type="tns:ExecutionInfo" />
      </s:sequence>
    </s:complexType>
  </s:element>
  <s:element name="ResetExecution2">
    <s:complexType />
  </s:element>
  <s:element name="ResetExecution2Response">
    <s:complexType>
      <s:sequence>
        <s:element minOccurs="0" maxOccurs="1" name="executionInfo"
type="tns:ExecutionInfo2" />
      </s:sequence>
    </s:complexType>
  </s:element>

```

```

<s:element name="Render">
  <s:complexType>
    <s:sequence>
      <s:element minOccurs="0" maxOccurs="1" name="Format" type="s:string" />
      <s:element minOccurs="0" maxOccurs="1" name="DeviceInfo" type="s:string" />
    </s:sequence>
  </s:complexType>
</s:element>
<s:element name="RenderResponse">
  <s:complexType>
    <s:sequence>
      <s:element minOccurs="0" maxOccurs="1" name="Result" type="s:base64Binary" />
      <s:element minOccurs="0" maxOccurs="1" name="Extension" type="s:string" />
      <s:element minOccurs="0" maxOccurs="1" name="MimeType" type="s:string" />
      <s:element minOccurs="0" maxOccurs="1" name="Encoding" type="s:string" />
      <s:element minOccurs="0" maxOccurs="1" name="Warnings" type="tns:ArrayOfWarning" />
    </s:sequence>
  <s:element minOccurs="0" maxOccurs="1" name="StreamIds" type="tns:ArrayOfString" />
</s:complexType>
</s:element>
<s:element name="Render2">
  <s:complexType>
    <s:sequence>
      <s:element minOccurs="0" maxOccurs="1" name="Format" type="s:string" />
      <s:element minOccurs="0" maxOccurs="1" name="DeviceInfo" type="s:string" />
      <s:element minOccurs="1" maxOccurs="1" name="PaginationMode" type="tns:PageCountMode" />
    </s:sequence>
  </s:complexType>
</s:element>
<s:element name="Render2Response">
  <s:complexType>
    <s:sequence>
      <s:element minOccurs="0" maxOccurs="1" name="Result" type="s:base64Binary" />
      <s:element minOccurs="0" maxOccurs="1" name="Extension" type="s:string" />
      <s:element minOccurs="0" maxOccurs="1" name="MimeType" type="s:string" />
      <s:element minOccurs="0" maxOccurs="1" name="Encoding" type="s:string" />
      <s:element minOccurs="0" maxOccurs="1" name="Warnings" type="tns:ArrayOfWarning" />
    </s:sequence>
  <s:element minOccurs="0" maxOccurs="1" name="StreamIds" type="tns:ArrayOfString" />
</s:complexType>
</s:element>
<s:element name="RenderStream">
  <s:complexType>
    <s:sequence>
      <s:element minOccurs="0" maxOccurs="1" name="Format" type="s:string" />
      <s:element minOccurs="0" maxOccurs="1" name="StreamID" type="s:string" />
      <s:element minOccurs="0" maxOccurs="1" name="DeviceInfo" type="s:string" />
    </s:sequence>
  </s:complexType>
</s:element>
<s:element name="RenderStreamResponse">
  <s:complexType>
    <s:sequence>
      <s:element minOccurs="0" maxOccurs="1" name="Result" type="s:base64Binary" />

```

```

        <s:element minOccurs="0" maxOccurs="1" name="Encoding" type="s:string" />
        <s:element minOccurs="0" maxOccurs="1" name="MimeType" type="s:string" />
    </s:sequence>
</s:complexType>
</s:element>
<s:element name="GetExecutionInfo">
    <s:complexType />
</s:element>
<s:element name="GetExecutionInfoResponse">
    <s:complexType>
        <s:sequence>
            <s:element minOccurs="0" maxOccurs="1" name="executionInfo"
type="tns:ExecutionInfo" />
        </s:sequence>
    </s:complexType>
</s:element>
<s:element name="GetExecutionInfo2">
    <s:complexType />
</s:element>
<s:element name="GetExecutionInfo2Response">
    <s:complexType>
        <s:sequence>
            <s:element minOccurs="0" maxOccurs="1" name="executionInfo"
type="tns:ExecutionInfo2" />
        </s:sequence>
    </s:complexType>
</s:element>
<s:element name="GetDocumentMap">
    <s:complexType />
</s:element>
<s:element name="GetDocumentMapResponse">
    <s:complexType>
        <s:sequence>
            <s:element minOccurs="0" maxOccurs="1" name="result" type="tns:DocumentMapNode"
/>
        </s:sequence>
    </s:complexType>
</s:element>
<s:complexType name="DocumentMapNode">
    <s:sequence>
        <s:element minOccurs="0" maxOccurs="1" name="Label" type="s:string" />
        <s:element minOccurs="0" maxOccurs="1" name="UniqueName" type="s:string" />
        <s:element minOccurs="0" maxOccurs="1" name="Children"
type="tns:ArrayOfDocumentMapNode" />
    </s:sequence>
</s:complexType>
<s:complexType name="ArrayOfDocumentMapNode">
    <s:sequence>
        <s:element minOccurs="0" maxOccurs="unbounded" name="DocumentMapNode"
nillable="true" type="tns:DocumentMapNode" />
    </s:sequence>
</s:complexType>
<s:element name="LoadDrillthroughTarget">
    <s:complexType>
        <s:sequence>
            <s:element minOccurs="0" maxOccurs="1" name="DrillthroughID" type="s:string" />
        </s:sequence>
    </s:complexType>
</s:element>

```

```

<s:element name="LoadDrillthroughTargetResponse">
  <s:complexType>
    <s:sequence>
      <s:element minOccurs="0" maxOccurs="1" name="ExecutionInfo"
type="tns:ExecutionInfo" />
    </s:sequence>
  </s:complexType>
</s:element>
<s:element name="LoadDrillthroughTarget2">
  <s:complexType>
    <s:sequence>
      <s:element minOccurs="0" maxOccurs="1" name="DrillthroughID" type="s:string" />
    </s:sequence>
  </s:complexType>
</s:element>
<s:element name="LoadDrillthroughTarget2Response">
  <s:complexType>
    <s:sequence>
      <s:element minOccurs="0" maxOccurs="1" name="ExecutionInfo"
type="tns:ExecutionInfo2" />
    </s:sequence>
  </s:complexType>
</s:element>
<s:element name="ToggleItem">
  <s:complexType>
    <s:sequence>
      <s:element minOccurs="0" maxOccurs="1" name="ToggleID" type="s:string" />
    </s:sequence>
  </s:complexType>
</s:element>
<s:element name="ToggleItemResponse">
  <s:complexType>
    <s:sequence>
      <s:element minOccurs="1" maxOccurs="1" name="Found" type="s:boolean" />
    </s:sequence>
  </s:complexType>
</s:element>
<s:element name="NavigateDocumentMap">
  <s:complexType>
    <s:sequence>
      <s:element minOccurs="0" maxOccurs="1" name="DocMapID" type="s:string" />
    </s:sequence>
  </s:complexType>
</s:element>
<s:element name="NavigateDocumentMapResponse">
  <s:complexType>
    <s:sequence>
      <s:element minOccurs="1" maxOccurs="1" name="PageNumber" type="s:int" />
    </s:sequence>
  </s:complexType>
</s:element>
<s:element name="NavigateBookmark">
  <s:complexType>
    <s:sequence>
      <s:element minOccurs="0" maxOccurs="1" name="BookmarkID" type="s:string" />
    </s:sequence>
  </s:complexType>
</s:element>
<s:element name="NavigateBookmarkResponse">

```

```

<s:complexType>
  <s:sequence>
    <s:element minOccurs="1" maxOccurs="1" name="PageNumber" type="s:int" />
    <s:element minOccurs="0" maxOccurs="1" name="UniqueName" type="s:string" />
  </s:sequence>
</s:complexType>
</s:element>
<s:element name="FindString">
  <s:complexType>
    <s:sequence>
      <s:element minOccurs="1" maxOccurs="1" name="StartPage" type="s:int" />
      <s:element minOccurs="1" maxOccurs="1" name="EndPage" type="s:int" />
      <s:element minOccurs="0" maxOccurs="1" name="FindValue" type="s:string" />
    </s:sequence>
  </s:complexType>
</s:element>
<s:element name="FindStringResponse">
  <s:complexType>
    <s:sequence>
      <s:element minOccurs="1" maxOccurs="1" name="PageNumber" type="s:int" />
    </s:sequence>
  </s:complexType>
</s:element>
<s:element name="Sort">
  <s:complexType>
    <s:sequence>
      <s:element minOccurs="0" maxOccurs="1" name="SortItem" type="s:string" />
      <s:element minOccurs="1" maxOccurs="1" name="Direction"
type="tns:SortDirectionEnum" />
      <s:element minOccurs="1" maxOccurs="1" name="Clear" type="s:boolean" />
    </s:sequence>
  </s:complexType>
</s:element>
<s:simpleType name="SortDirectionEnum">
  <s:restriction base="s:string">
    <s:enumeration value="None" />
    <s:enumeration value="Ascending" />
    <s:enumeration value="Descending" />
  </s:restriction>
</s:simpleType>
<s:element name="SortResponse">
  <s:complexType>
    <s:sequence>
      <s:element minOccurs="1" maxOccurs="1" name="PageNumber" type="s:int" />
      <s:element minOccurs="0" maxOccurs="1" name="ReportItem" type="s:string" />
      <s:element minOccurs="1" maxOccurs="1" name="NumPages" type="s:int" />
    </s:sequence>
  </s:complexType>
</s:element>
<s:element name="Sort2">
  <s:complexType>
    <s:sequence>
      <s:element minOccurs="0" maxOccurs="1" name="SortItem" type="s:string" />
      <s:element minOccurs="1" maxOccurs="1" name="Direction"
type="tns:SortDirectionEnum" />
      <s:element minOccurs="1" maxOccurs="1" name="Clear" type="s:boolean" />
      <s:element minOccurs="1" maxOccurs="1" name="PaginationMode"
type="tns:PageCountMode" />
    </s:sequence>
  </s:complexType>
</s:element>

```



```

    </s:complexType>
  </s:element>
  <s:element name="Sort2Response">
    <s:complexType>
      <s:sequence>
        <s:element minOccurs="1" maxOccurs="1" name="PageNumber" type="s:int" />
        <s:element minOccurs="0" maxOccurs="1" name="ReportItem" type="s:string" />
        <s:element minOccurs="0" maxOccurs="1" name="ExecutionInfo"
type="tns:ExecutionInfo2" />
      </s:sequence>
    </s:complexType>
  </s:element>
  <s:element name="GetRenderResource">
    <s:complexType>
      <s:sequence>
        <s:element minOccurs="0" maxOccurs="1" name="Format" type="s:string" />
        <s:element minOccurs="0" maxOccurs="1" name="DeviceInfo" type="s:string" />
      </s:sequence>
    </s:complexType>
  </s:element>
  <s:element name="GetRenderResourceResponse">
    <s:complexType>
      <s:sequence>
        <s:element minOccurs="0" maxOccurs="1" name="Result" type="s:base64Binary" />
        <s:element minOccurs="0" maxOccurs="1" name="MimeType" type="s:string" />
      </s:sequence>
    </s:complexType>
  </s:element>
  <s:element name="ListRenderingExtensions">
    <s:complexType />
  </s:element>
  <s:element name="ListRenderingExtensionsResponse">
    <s:complexType>
      <s:sequence>
        <s:element minOccurs="0" maxOccurs="1" name="Extensions"
type="tns:ArrayOfExtension" />
      </s:sequence>
    </s:complexType>
  </s:element>
  <s:complexType name="ArrayOfExtension">
    <s:sequence>
      <s:element minOccurs="0" maxOccurs="unbounded" name="Extension" nillable="true"
type="tns:Extension" />
    </s:sequence>
  </s:complexType>
  <s:complexType name="Extension">
    <s:sequence>
      <s:element minOccurs="1" maxOccurs="1" name="ExtensionType"
type="tns:ExtensionTypeEnum" />
      <s:element minOccurs="0" maxOccurs="1" name="Name" type="s:string" />
      <s:element minOccurs="0" maxOccurs="1" name="LocalizedName" type="s:string" />
      <s:element minOccurs="1" maxOccurs="1" name="Visible" type="s:boolean" />
      <s:element minOccurs="1" maxOccurs="1" name="IsModelGenerationSupported"
type="s:boolean" />
    </s:sequence>
  </s:complexType>
  <s:simpleType name="ExtensionTypeEnum">
    <s:restriction base="s:string">
      <s:enumeration value="Delivery" />
    </s:restriction>
  </s:simpleType>

```

```

        <s:enumeration value="Render" />
        <s:enumeration value="Data" />
        <s:enumeration value="All" />
    </s:restriction>
</s:simpleType>
<s:element name="LogonUser">
    <s:complexType>
        <s:sequence>
            <s:element minOccurs="0" maxOccurs="1" name="userName" type="s:string" />
            <s:element minOccurs="0" maxOccurs="1" name="password" type="s:string" />
            <s:element minOccurs="0" maxOccurs="1" name="authority" type="s:string" />
        </s:sequence>
    </s:complexType>
</s:element>
<s:element name="LogonUserResponse">
    <s:complexType />
</s:element>
<s:element name="Logoff">
    <s:complexType />
</s:element>
<s:element name="LogoffResponse">
    <s:complexType />
</s:element>
</s:schema>
</wsdl:types>
<wsdl:message name="ListSecureMethodsSoapIn">
    <wsdl:part name="parameters" element="tns:ListSecureMethods" />
</wsdl:message>
<wsdl:message name="ListSecureMethodsSoapOut">
    <wsdl:part name="parameters" element="tns:ListSecureMethodsResponse" />
</wsdl:message>
<wsdl:message name="ListSecureMethodsServerInfoHeader">
    <wsdl:part name="ServerInfoHeader" element="tns:ServerInfoHeader" />
</wsdl:message>
<wsdl:message name="ListSecureMethodsTrustedUserHeader">
    <wsdl:part name="TrustedUserHeader" element="tns:TrustedUserHeader" />
</wsdl:message>
<wsdl:message name="LoadReportSoapIn">
    <wsdl:part name="parameters" element="tns:LoadReport" />
</wsdl:message>
<wsdl:message name="LoadReportSoapOut">
    <wsdl:part name="parameters" element="tns:LoadReportResponse" />
</wsdl:message>
<wsdl:message name="LoadReportExecutionHeader">
    <wsdl:part name="ExecutionHeader" element="tns:ExecutionHeader" />
</wsdl:message>
<wsdl:message name="LoadReportServerInfoHeader">
    <wsdl:part name="ServerInfoHeader" element="tns:ServerInfoHeader" />
</wsdl:message>
<wsdl:message name="LoadReportTrustedUserHeader">
    <wsdl:part name="TrustedUserHeader" element="tns:TrustedUserHeader" />
</wsdl:message>
<wsdl:message name="LoadReport2SoapIn">
    <wsdl:part name="parameters" element="tns:LoadReport2" />
</wsdl:message>
<wsdl:message name="LoadReport2SoapOut">
    <wsdl:part name="parameters" element="tns:LoadReport2Response" />
</wsdl:message>
<wsdl:message name="LoadReport2ExecutionHeader">

```

```

    <wsdl:part name="ExecutionHeader" element="tns:ExecutionHeader" />
</wsdl:message>
<wsdl:message name="LoadReport2ServerInfoHeader">
    <wsdl:part name="ServerInfoHeader" element="tns:ServerInfoHeader" />
</wsdl:message>
<wsdl:message name="LoadReport2TrustedUserHeader">
    <wsdl:part name="TrustedUserHeader" element="tns:TrustedUserHeader" />
</wsdl:message>
<wsdl:message name="LoadReportDefinitionSoapIn">
    <wsdl:part name="parameters" element="tns:LoadReportDefinition" />
</wsdl:message>
<wsdl:message name="LoadReportDefinitionSoapOut">
    <wsdl:part name="parameters" element="tns:LoadReportDefinitionResponse" />
</wsdl:message>
<wsdl:message name="LoadReportDefinitionExecutionHeader">
    <wsdl:part name="ExecutionHeader" element="tns:ExecutionHeader" />
</wsdl:message>
<wsdl:message name="LoadReportDefinitionServerInfoHeader">
    <wsdl:part name="ServerInfoHeader" element="tns:ServerInfoHeader" />
</wsdl:message>
<wsdl:message name="LoadReportDefinitionTrustedUserHeader">
    <wsdl:part name="TrustedUserHeader" element="tns:TrustedUserHeader" />
</wsdl:message>
<wsdl:message name="LoadReportDefinition2SoapIn">
    <wsdl:part name="parameters" element="tns:LoadReportDefinition2" />
</wsdl:message>
<wsdl:message name="LoadReportDefinition2SoapOut">
    <wsdl:part name="parameters" element="tns:LoadReportDefinition2Response" />
</wsdl:message>
<wsdl:message name="LoadReportDefinition2ExecutionHeader">
    <wsdl:part name="ExecutionHeader" element="tns:ExecutionHeader" />
</wsdl:message>
<wsdl:message name="LoadReportDefinition2ServerInfoHeader">
    <wsdl:part name="ServerInfoHeader" element="tns:ServerInfoHeader" />
</wsdl:message>
<wsdl:message name="LoadReportDefinition2TrustedUserHeader">
    <wsdl:part name="TrustedUserHeader" element="tns:TrustedUserHeader" />
</wsdl:message>
<wsdl:message name="SetExecutionCredentialsSoapIn">
    <wsdl:part name="parameters" element="tns:SetExecutionCredentials" />
</wsdl:message>
<wsdl:message name="SetExecutionCredentialsSoapOut">
    <wsdl:part name="parameters" element="tns:SetExecutionCredentialsResponse" />
</wsdl:message>
<wsdl:message name="SetExecutionCredentialsExecutionHeader">
    <wsdl:part name="ExecutionHeader" element="tns:ExecutionHeader" />
</wsdl:message>
<wsdl:message name="SetExecutionCredentialsServerInfoHeader">
    <wsdl:part name="ServerInfoHeader" element="tns:ServerInfoHeader" />
</wsdl:message>
<wsdl:message name="SetExecutionCredentialsTrustedUserHeader">
    <wsdl:part name="TrustedUserHeader" element="tns:TrustedUserHeader" />
</wsdl:message>
<wsdl:message name="SetExecutionCredentials2SoapIn">
    <wsdl:part name="parameters" element="tns:SetExecutionCredentials2" />
</wsdl:message>
<wsdl:message name="SetExecutionCredentials2SoapOut">
    <wsdl:part name="parameters" element="tns:SetExecutionCredentials2Response" />
</wsdl:message>

```

```

<wsdl:message name="SetExecutionCredentials2ExecutionHeader">
  <wsdl:part name="ExecutionHeader" element="tns:ExecutionHeader" />
</wsdl:message>
<wsdl:message name="SetExecutionCredentials2ServerInfoHeader">
  <wsdl:part name="ServerInfoHeader" element="tns:ServerInfoHeader" />
</wsdl:message>
<wsdl:message name="SetExecutionCredentials2TrustedUserHeader">
  <wsdl:part name="TrustedUserHeader" element="tns:TrustedUserHeader" />
</wsdl:message>
<wsdl:message name="SetExecutionParametersSoapIn">
  <wsdl:part name="parameters" element="tns:SetExecutionParameters" />
</wsdl:message>
<wsdl:message name="SetExecutionParametersSoapOut">
  <wsdl:part name="parameters" element="tns:SetExecutionParametersResponse" />
</wsdl:message>
<wsdl:message name="SetExecutionParametersExecutionHeader">
  <wsdl:part name="ExecutionHeader" element="tns:ExecutionHeader" />
</wsdl:message>
<wsdl:message name="SetExecutionParametersServerInfoHeader">
  <wsdl:part name="ServerInfoHeader" element="tns:ServerInfoHeader" />
</wsdl:message>
<wsdl:message name="SetExecutionParametersTrustedUserHeader">
  <wsdl:part name="TrustedUserHeader" element="tns:TrustedUserHeader" />
</wsdl:message>
<wsdl:message name="SetExecutionParameters2SoapIn">
  <wsdl:part name="parameters" element="tns:SetExecutionParameters2" />
</wsdl:message>
<wsdl:message name="SetExecutionParameters2SoapOut">
  <wsdl:part name="parameters" element="tns:SetExecutionParameters2Response" />
</wsdl:message>
<wsdl:message name="SetExecutionParameters2ExecutionHeader">
  <wsdl:part name="ExecutionHeader" element="tns:ExecutionHeader" />
</wsdl:message>
<wsdl:message name="SetExecutionParameters2ServerInfoHeader">
  <wsdl:part name="ServerInfoHeader" element="tns:ServerInfoHeader" />
</wsdl:message>
<wsdl:message name="SetExecutionParameters2TrustedUserHeader">
  <wsdl:part name="TrustedUserHeader" element="tns:TrustedUserHeader" />
</wsdl:message>
<wsdl:message name="ResetExecutionSoapIn">
  <wsdl:part name="parameters" element="tns:ResetExecution" />
</wsdl:message>
<wsdl:message name="ResetExecutionSoapOut">
  <wsdl:part name="parameters" element="tns:ResetExecutionResponse" />
</wsdl:message>
<wsdl:message name="ResetExecutionExecutionHeader">
  <wsdl:part name="ExecutionHeader" element="tns:ExecutionHeader" />
</wsdl:message>
<wsdl:message name="ResetExecutionServerInfoHeader">
  <wsdl:part name="ServerInfoHeader" element="tns:ServerInfoHeader" />
</wsdl:message>
<wsdl:message name="ResetExecutionTrustedUserHeader">
  <wsdl:part name="TrustedUserHeader" element="tns:TrustedUserHeader" />
</wsdl:message>
<wsdl:message name="ResetExecution2SoapIn">
  <wsdl:part name="parameters" element="tns:ResetExecution2" />
</wsdl:message>
<wsdl:message name="ResetExecution2SoapOut">
  <wsdl:part name="parameters" element="tns:ResetExecution2Response" />

```

```

</wsdl:message>
<wsdl:message name="ResetExecution2ExecutionHeader">
  <wsdl:part name="ExecutionHeader" element="tns:ExecutionHeader" />
</wsdl:message>
<wsdl:message name="ResetExecution2ServerInfoHeader">
  <wsdl:part name="ServerInfoHeader" element="tns:ServerInfoHeader" />
</wsdl:message>
<wsdl:message name="ResetExecution2TrustedUserHeader">
  <wsdl:part name="TrustedUserHeader" element="tns:TrustedUserHeader" />
</wsdl:message>
<wsdl:message name="RenderSoapIn">
  <wsdl:part name="parameters" element="tns:Render" />
</wsdl:message>
<wsdl:message name="RenderSoapOut">
  <wsdl:part name="parameters" element="tns:RenderResponse" />
</wsdl:message>
<wsdl:message name="RenderExecutionHeader">
  <wsdl:part name="ExecutionHeader" element="tns:ExecutionHeader" />
</wsdl:message>
<wsdl:message name="RenderServerInfoHeader">
  <wsdl:part name="ServerInfoHeader" element="tns:ServerInfoHeader" />
</wsdl:message>
<wsdl:message name="RenderTrustedUserHeader">
  <wsdl:part name="TrustedUserHeader" element="tns:TrustedUserHeader" />
</wsdl:message>
<wsdl:message name="Render2SoapIn">
  <wsdl:part name="parameters" element="tns:Render2" />
</wsdl:message>
<wsdl:message name="Render2SoapOut">
  <wsdl:part name="parameters" element="tns:Render2Response" />
</wsdl:message>
<wsdl:message name="Render2ExecutionHeader">
  <wsdl:part name="ExecutionHeader" element="tns:ExecutionHeader" />
</wsdl:message>
<wsdl:message name="Render2ServerInfoHeader">
  <wsdl:part name="ServerInfoHeader" element="tns:ServerInfoHeader" />
</wsdl:message>
<wsdl:message name="Render2TrustedUserHeader">
  <wsdl:part name="TrustedUserHeader" element="tns:TrustedUserHeader" />
</wsdl:message>
<wsdl:message name="RenderStreamSoapIn">
  <wsdl:part name="parameters" element="tns:RenderStream" />
</wsdl:message>
<wsdl:message name="RenderStreamSoapOut">
  <wsdl:part name="parameters" element="tns:RenderStreamResponse" />
</wsdl:message>
<wsdl:message name="RenderStreamExecutionHeader">
  <wsdl:part name="ExecutionHeader" element="tns:ExecutionHeader" />
</wsdl:message>
<wsdl:message name="RenderStreamServerInfoHeader">
  <wsdl:part name="ServerInfoHeader" element="tns:ServerInfoHeader" />
</wsdl:message>
<wsdl:message name="RenderStreamTrustedUserHeader">
  <wsdl:part name="TrustedUserHeader" element="tns:TrustedUserHeader" />
</wsdl:message>
<wsdl:message name="GetExecutionInfoSoapIn">
  <wsdl:part name="parameters" element="tns:GetExecutionInfo" />
</wsdl:message>
<wsdl:message name="GetExecutionInfoSoapOut">

```

```

    <wsdl:part name="parameters" element="tns:GetExecutionInfoResponse" />
</wsdl:message>
<wsdl:message name="GetExecutionInfoExecutionHeader">
  <wsdl:part name="ExecutionHeader" element="tns:ExecutionHeader" />
</wsdl:message>
<wsdl:message name="GetExecutionInfoServerInfoHeader">
  <wsdl:part name="ServerInfoHeader" element="tns:ServerInfoHeader" />
</wsdl:message>
<wsdl:message name="GetExecutionInfoTrustedUserHeader">
  <wsdl:part name="TrustedUserHeader" element="tns:TrustedUserHeader" />
</wsdl:message>
<wsdl:message name="GetExecutionInfo2SoapIn">
  <wsdl:part name="parameters" element="tns:GetExecutionInfo2" />
</wsdl:message>
<wsdl:message name="GetExecutionInfo2SoapOut">
  <wsdl:part name="parameters" element="tns:GetExecutionInfo2Response" />
</wsdl:message>
<wsdl:message name="GetExecutionInfo2ExecutionHeader">
  <wsdl:part name="ExecutionHeader" element="tns:ExecutionHeader" />
</wsdl:message>
<wsdl:message name="GetExecutionInfo2ServerInfoHeader">
  <wsdl:part name="ServerInfoHeader" element="tns:ServerInfoHeader" />
</wsdl:message>
<wsdl:message name="GetExecutionInfo2TrustedUserHeader">
  <wsdl:part name="TrustedUserHeader" element="tns:TrustedUserHeader" />
</wsdl:message>
<wsdl:message name="GetDocumentMapSoapIn">
  <wsdl:part name="parameters" element="tns:GetDocumentMap" />
</wsdl:message>
<wsdl:message name="GetDocumentMapSoapOut">
  <wsdl:part name="parameters" element="tns:GetDocumentMapResponse" />
</wsdl:message>
<wsdl:message name="GetDocumentMapExecutionHeader">
  <wsdl:part name="ExecutionHeader" element="tns:ExecutionHeader" />
</wsdl:message>
<wsdl:message name="GetDocumentMapServerInfoHeader">
  <wsdl:part name="ServerInfoHeader" element="tns:ServerInfoHeader" />
</wsdl:message>
<wsdl:message name="GetDocumentMapTrustedUserHeader">
  <wsdl:part name="TrustedUserHeader" element="tns:TrustedUserHeader" />
</wsdl:message>
<wsdl:message name="LoadDrillthroughTargetSoapIn">
  <wsdl:part name="parameters" element="tns:LoadDrillthroughTarget" />
</wsdl:message>
<wsdl:message name="LoadDrillthroughTargetSoapOut">
  <wsdl:part name="parameters" element="tns:LoadDrillthroughTargetResponse" />
</wsdl:message>
<wsdl:message name="LoadDrillthroughTargetExecutionHeader">
  <wsdl:part name="ExecutionHeader" element="tns:ExecutionHeader" />
</wsdl:message>
<wsdl:message name="LoadDrillthroughTargetServerInfoHeader">
  <wsdl:part name="ServerInfoHeader" element="tns:ServerInfoHeader" />
</wsdl:message>
<wsdl:message name="LoadDrillthroughTargetTrustedUserHeader">
  <wsdl:part name="TrustedUserHeader" element="tns:TrustedUserHeader" />
</wsdl:message>
<wsdl:message name="LoadDrillthroughTarget2SoapIn">
  <wsdl:part name="parameters" element="tns:LoadDrillthroughTarget2" />
</wsdl:message>

```

```

<wsdl:message name="LoadDrillthroughTarget2SoapOut">
  <wsdl:part name="parameters" element="tns:LoadDrillthroughTarget2Response" />
</wsdl:message>
<wsdl:message name="LoadDrillthroughTarget2ExecutionHeader">
  <wsdl:part name="ExecutionHeader" element="tns:ExecutionHeader" />
</wsdl:message>
<wsdl:message name="LoadDrillthroughTarget2ServerInfoHeader">
  <wsdl:part name="ServerInfoHeader" element="tns:ServerInfoHeader" />
</wsdl:message>
<wsdl:message name="LoadDrillthroughTarget2TrustedUserHeader">
  <wsdl:part name="TrustedUserHeader" element="tns:TrustedUserHeader" />
</wsdl:message>
<wsdl:message name="ToggleItemSoapIn">
  <wsdl:part name="parameters" element="tns:ToggleItem" />
</wsdl:message>
<wsdl:message name="ToggleItemSoapOut">
  <wsdl:part name="parameters" element="tns:ToggleItemResponse" />
</wsdl:message>
<wsdl:message name="ToggleItemExecutionHeader">
  <wsdl:part name="ExecutionHeader" element="tns:ExecutionHeader" />
</wsdl:message>
<wsdl:message name="ToggleItemServerInfoHeader">
  <wsdl:part name="ServerInfoHeader" element="tns:ServerInfoHeader" />
</wsdl:message>
<wsdl:message name="ToggleItemTrustedUserHeader">
  <wsdl:part name="TrustedUserHeader" element="tns:TrustedUserHeader" />
</wsdl:message>
<wsdl:message name="NavigateDocumentMapSoapIn">
  <wsdl:part name="parameters" element="tns:NavigateDocumentMap" />
</wsdl:message>
<wsdl:message name="NavigateDocumentMapSoapOut">
  <wsdl:part name="parameters" element="tns:NavigateDocumentMapResponse" />
</wsdl:message>
<wsdl:message name="NavigateDocumentMapExecutionHeader">
  <wsdl:part name="ExecutionHeader" element="tns:ExecutionHeader" />
</wsdl:message>
<wsdl:message name="NavigateDocumentMapServerInfoHeader">
  <wsdl:part name="ServerInfoHeader" element="tns:ServerInfoHeader" />
</wsdl:message>
<wsdl:message name="NavigateDocumentMapTrustedUserHeader">
  <wsdl:part name="TrustedUserHeader" element="tns:TrustedUserHeader" />
</wsdl:message>
<wsdl:message name="NavigateBookmarkSoapIn">
  <wsdl:part name="parameters" element="tns:NavigateBookmark" />
</wsdl:message>
<wsdl:message name="NavigateBookmarkSoapOut">
  <wsdl:part name="parameters" element="tns:NavigateBookmarkResponse" />
</wsdl:message>
<wsdl:message name="NavigateBookmarkExecutionHeader">
  <wsdl:part name="ExecutionHeader" element="tns:ExecutionHeader" />
</wsdl:message>
<wsdl:message name="NavigateBookmarkServerInfoHeader">
  <wsdl:part name="ServerInfoHeader" element="tns:ServerInfoHeader" />
</wsdl:message>
<wsdl:message name="NavigateBookmarkTrustedUserHeader">
  <wsdl:part name="TrustedUserHeader" element="tns:TrustedUserHeader" />
</wsdl:message>
<wsdl:message name="FindStringSoapIn">
  <wsdl:part name="parameters" element="tns:FindString" />

```

```

</wsdl:message>
<wsdl:message name="FindStringSoapOut">
  <wsdl:part name="parameters" element="tns:FindStringResponse" />
</wsdl:message>
<wsdl:message name="FindStringExecutionHeader">
  <wsdl:part name="ExecutionHeader" element="tns:ExecutionHeader" />
</wsdl:message>
<wsdl:message name="FindStringServerInfoHeader">
  <wsdl:part name="ServerInfoHeader" element="tns:ServerInfoHeader" />
</wsdl:message>
<wsdl:message name="FindStringTrustedUserHeader">
  <wsdl:part name="TrustedUserHeader" element="tns:TrustedUserHeader" />
</wsdl:message>
<wsdl:message name="SortSoapIn">
  <wsdl:part name="parameters" element="tns:Sort" />
</wsdl:message>
<wsdl:message name="SortSoapOut">
  <wsdl:part name="parameters" element="tns:SortResponse" />
</wsdl:message>
<wsdl:message name="SortExecutionHeader">
  <wsdl:part name="ExecutionHeader" element="tns:ExecutionHeader" />
</wsdl:message>
<wsdl:message name="SortServerInfoHeader">
  <wsdl:part name="ServerInfoHeader" element="tns:ServerInfoHeader" />
</wsdl:message>
<wsdl:message name="SortTrustedUserHeader">
  <wsdl:part name="TrustedUserHeader" element="tns:TrustedUserHeader" />
</wsdl:message>
<wsdl:message name="Sort2SoapIn">
  <wsdl:part name="parameters" element="tns:Sort2" />
</wsdl:message>
<wsdl:message name="Sort2SoapOut">
  <wsdl:part name="parameters" element="tns:Sort2Response" />
</wsdl:message>
<wsdl:message name="Sort2ExecutionHeader">
  <wsdl:part name="ExecutionHeader" element="tns:ExecutionHeader" />
</wsdl:message>
<wsdl:message name="Sort2ServerInfoHeader">
  <wsdl:part name="ServerInfoHeader" element="tns:ServerInfoHeader" />
</wsdl:message>
<wsdl:message name="Sort2TrustedUserHeader">
  <wsdl:part name="TrustedUserHeader" element="tns:TrustedUserHeader" />
</wsdl:message>
<wsdl:message name="GetRenderResourceSoapIn">
  <wsdl:part name="parameters" element="tns:GetRenderResource" />
</wsdl:message>
<wsdl:message name="GetRenderResourceSoapOut">
  <wsdl:part name="parameters" element="tns:GetRenderResourceResponse" />
</wsdl:message>
<wsdl:message name="GetRenderResourceServerInfoHeader">
  <wsdl:part name="ServerInfoHeader" element="tns:ServerInfoHeader" />
</wsdl:message>
<wsdl:message name="GetRenderResourceTrustedUserHeader">
  <wsdl:part name="TrustedUserHeader" element="tns:TrustedUserHeader" />
</wsdl:message>
<wsdl:message name="ListRenderingExtensionsSoapIn">
  <wsdl:part name="parameters" element="tns:ListRenderingExtensions" />
</wsdl:message>
<wsdl:message name="ListRenderingExtensionsSoapOut">

```



```

    <wsdl:part name="parameters" element="tns:ListRenderingExtensionsResponse" />
</wsdl:message>
<wsdl:message name="ListRenderingExtensionsServerInfoHeader">
  <wsdl:part name="ServerInfoHeader" element="tns:ServerInfoHeader" />
</wsdl:message>
<wsdl:message name="ListRenderingExtensionsTrustedUserHeader">
  <wsdl:part name="TrustedUserHeader" element="tns:TrustedUserHeader" />
</wsdl:message>
<wsdl:message name="LogonUserSoapIn">
  <wsdl:part name="parameters" element="tns:LogonUser" />
</wsdl:message>
<wsdl:message name="LogonUserSoapOut">
  <wsdl:part name="parameters" element="tns:LogonUserResponse" />
</wsdl:message>
<wsdl:message name="LogonUserServerInfoHeader">
  <wsdl:part name="ServerInfoHeader" element="tns:ServerInfoHeader" />
</wsdl:message>
<wsdl:message name="LogoffSoapIn">
  <wsdl:part name="parameters" element="tns:Logoff" />
</wsdl:message>
<wsdl:message name="LogoffSoapOut">
  <wsdl:part name="parameters" element="tns:LogoffResponse" />
</wsdl:message>
<wsdl:message name="LogoffServerInfoHeader">
  <wsdl:part name="ServerInfoHeader" element="tns:ServerInfoHeader" />
</wsdl:message>
<wsdl:portType name="ReportExecutionServiceSoap">
  <wsdl:operation name="ListSecureMethods">
    <wsdl:input message="tns:ListSecureMethodsSoapIn" />
    <wsdl:output message="tns:ListSecureMethodsSoapOut" />
  </wsdl:operation>
  <wsdl:operation name="LoadReport">
    <wsdl:input message="tns:LoadReportSoapIn" />
    <wsdl:output message="tns:LoadReportSoapOut" />
  </wsdl:operation>
  <wsdl:operation name="LoadReport2">
    <wsdl:input message="tns:LoadReport2SoapIn" />
    <wsdl:output message="tns:LoadReport2SoapOut" />
  </wsdl:operation>
  <wsdl:operation name="LoadReportDefinition">
    <wsdl:input message="tns:LoadReportDefinitionSoapIn" />
    <wsdl:output message="tns:LoadReportDefinitionSoapOut" />
  </wsdl:operation>
  <wsdl:operation name="LoadReportDefinition2">
    <wsdl:input message="tns:LoadReportDefinition2SoapIn" />
    <wsdl:output message="tns:LoadReportDefinition2SoapOut" />
  </wsdl:operation>
  <wsdl:operation name="SetExecutionCredentials">
    <wsdl:input message="tns:SetExecutionCredentialsSoapIn" />
    <wsdl:output message="tns:SetExecutionCredentialsSoapOut" />
  </wsdl:operation>
  <wsdl:operation name="SetExecutionCredentials2">
    <wsdl:input message="tns:SetExecutionCredentials2SoapIn" />
    <wsdl:output message="tns:SetExecutionCredentials2SoapOut" />
  </wsdl:operation>
  <wsdl:operation name="SetExecutionParameters">
    <wsdl:input message="tns:SetExecutionParametersSoapIn" />
    <wsdl:output message="tns:SetExecutionParametersSoapOut" />
  </wsdl:operation>

```

```

<wsdl:operation name="SetExecutionParameters2">
  <wsdl:input message="tns:SetExecutionParameters2SoapIn" />
  <wsdl:output message="tns:SetExecutionParameters2SoapOut" />
</wsdl:operation>
<wsdl:operation name="ResetExecution">
  <wsdl:input message="tns:ResetExecutionSoapIn" />
  <wsdl:output message="tns:ResetExecutionSoapOut" />
</wsdl:operation>
<wsdl:operation name="ResetExecution2">
  <wsdl:input message="tns:ResetExecution2SoapIn" />
  <wsdl:output message="tns:ResetExecution2SoapOut" />
</wsdl:operation>
<wsdl:operation name="Render">
  <wsdl:input message="tns:RenderSoapIn" />
  <wsdl:output message="tns:RenderSoapOut" />
</wsdl:operation>
<wsdl:operation name="Render2">
  <wsdl:input message="tns:Render2SoapIn" />
  <wsdl:output message="tns:Render2SoapOut" />
</wsdl:operation>
<wsdl:operation name="RenderStream">
  <wsdl:input message="tns:RenderStreamSoapIn" />
  <wsdl:output message="tns:RenderStreamSoapOut" />
</wsdl:operation>
<wsdl:operation name="GetExecutionInfo">
  <wsdl:input message="tns:GetExecutionInfoSoapIn" />
  <wsdl:output message="tns:GetExecutionInfoSoapOut" />
</wsdl:operation>
<wsdl:operation name="GetExecutionInfo2">
  <wsdl:input message="tns:GetExecutionInfo2SoapIn" />
  <wsdl:output message="tns:GetExecutionInfo2SoapOut" />
</wsdl:operation>
<wsdl:operation name="GetDocumentMap">
  <wsdl:input message="tns:GetDocumentMapSoapIn" />
  <wsdl:output message="tns:GetDocumentMapSoapOut" />
</wsdl:operation>
<wsdl:operation name="LoadDrillthroughTarget">
  <wsdl:input message="tns:LoadDrillthroughTargetSoapIn" />
  <wsdl:output message="tns:LoadDrillthroughTargetSoapOut" />
</wsdl:operation>
<wsdl:operation name="LoadDrillthroughTarget2">
  <wsdl:input message="tns:LoadDrillthroughTarget2SoapIn" />
  <wsdl:output message="tns:LoadDrillthroughTarget2SoapOut" />
</wsdl:operation>
<wsdl:operation name="ToggleItem">
  <wsdl:input message="tns:ToggleItemSoapIn" />
  <wsdl:output message="tns:ToggleItemSoapOut" />
</wsdl:operation>
<wsdl:operation name="NavigateDocumentMap">
  <wsdl:input message="tns:NavigateDocumentMapSoapIn" />
  <wsdl:output message="tns:NavigateDocumentMapSoapOut" />
</wsdl:operation>
<wsdl:operation name="NavigateBookmark">
  <wsdl:input message="tns:NavigateBookmarkSoapIn" />
  <wsdl:output message="tns:NavigateBookmarkSoapOut" />
</wsdl:operation>
<wsdl:operation name="FindString">
  <wsdl:input message="tns:FindStringSoapIn" />
  <wsdl:output message="tns:FindStringSoapOut" />

```

```

</wsdl:operation>
<wsdl:operation name="Sort">
  <wsdl:input message="tns:SortSoapIn" />
  <wsdl:output message="tns:SortSoapOut" />
</wsdl:operation>
<wsdl:operation name="Sort2">
  <wsdl:input message="tns:Sort2SoapIn" />
  <wsdl:output message="tns:Sort2SoapOut" />
</wsdl:operation>
<wsdl:operation name="GetRenderResource">
  <wsdl:input message="tns:GetRenderResourceSoapIn" />
  <wsdl:output message="tns:GetRenderResourceSoapOut" />
</wsdl:operation>
<wsdl:operation name="ListRenderingExtensions">
  <wsdl:input message="tns:ListRenderingExtensionsSoapIn" />
  <wsdl:output message="tns:ListRenderingExtensionsSoapOut" />
</wsdl:operation>
<wsdl:operation name="LogonUser">
  <wsdl:input message="tns:LogonUserSoapIn" />
  <wsdl:output message="tns:LogonUserSoapOut" />
</wsdl:operation>
<wsdl:operation name="Logoff">
  <wsdl:input message="tns:LogoffSoapIn" />
  <wsdl:output message="tns:LogoffSoapOut" />
</wsdl:operation>
</wsdl:portType>
<wsdl:binding name="ReportExecutionServiceSoap" type="tns:ReportExecutionServiceSoap">
  <soap:binding transport="http://schemas.xmlsoap.org/soap/http" />
  <wsdl:operation name="ListSecureMethods">
    <soap:operation
      soapAction="http://schemas.microsoft.com/sqlserver/2005/06/30/reporting/reportingservices/ListSecureMethods" style="document" />
    <wsdl:input>
      <soap:body use="literal" />
      <soap:header message="tns:ListSecureMethodsTrustedUserHeader"
        part="TrustedUserHeader" use="literal" />
    </wsdl:input>
    <wsdl:output>
      <soap:body use="literal" />
      <soap:header message="tns:ListSecureMethodsServerInfoHeader" part="ServerInfoHeader"
        use="literal" />
    </wsdl:output>
  </wsdl:operation>
  <wsdl:operation name="LoadReport">
    <soap:operation
      soapAction="http://schemas.microsoft.com/sqlserver/2005/06/30/reporting/reportingservices/LoadReport" style="document" />
    <wsdl:input>
      <soap:body use="literal" />
      <soap:header message="tns:LoadReportTrustedUserHeader" part="TrustedUserHeader"
        use="literal" />
    </wsdl:input>
    <wsdl:output>
      <soap:body use="literal" />
      <soap:header message="tns:LoadReportExecutionHeader" part="ExecutionHeader"
        use="literal" />
      <soap:header message="tns:LoadReportServerInfoHeader" part="ServerInfoHeader"
        use="literal" />
    </wsdl:output>
  </wsdl:operation>

```

```

    <wsdl:operation name="LoadReport2">
      <soap:operation
        soapAction="http://schemas.microsoft.com/sqlserver/2005/06/30/reporting/reportingservices/LoadReport2" style="document" />
      <wsdl:input>
        <soap:body use="literal" />
        <soap:header message="tns:LoadReport2TrustedUserHeader" part="TrustedUserHeader"
          use="literal" />
      </wsdl:input>
      <wsdl:output>
        <soap:body use="literal" />
        <soap:header message="tns:LoadReport2ExecutionHeader" part="ExecutionHeader"
          use="literal" />
        <soap:header message="tns:LoadReport2ServerInfoHeader" part="ServerInfoHeader"
          use="literal" />
      </wsdl:output>
    </wsdl:operation>
    <wsdl:operation name="LoadReportDefinition">
      <soap:operation
        soapAction="http://schemas.microsoft.com/sqlserver/2005/06/30/reporting/reportingservices/LoadReportDefinition" style="document" />
      <wsdl:input>
        <soap:body use="literal" />
        <soap:header message="tns:LoadReportDefinitionTrustedUserHeader"
          part="TrustedUserHeader" use="literal" />
      </wsdl:input>
      <wsdl:output>
        <soap:body use="literal" />
        <soap:header message="tns:LoadReportDefinitionExecutionHeader" part="ExecutionHeader"
          use="literal" />
        <soap:header message="tns:LoadReportDefinitionServerInfoHeader"
          part="ServerInfoHeader" use="literal" />
      </wsdl:output>
    </wsdl:operation>
    <wsdl:operation name="LoadReportDefinition2">
      <soap:operation
        soapAction="http://schemas.microsoft.com/sqlserver/2005/06/30/reporting/reportingservices/LoadReportDefinition2" style="document" />
      <wsdl:input>
        <soap:body use="literal" />
        <soap:header message="tns:LoadReportDefinition2TrustedUserHeader"
          part="TrustedUserHeader" use="literal" />
      </wsdl:input>
      <wsdl:output>
        <soap:body use="literal" />
        <soap:header message="tns:LoadReportDefinition2ExecutionHeader"
          part="ExecutionHeader" use="literal" />
        <soap:header message="tns:LoadReportDefinition2ServerInfoHeader"
          part="ServerInfoHeader" use="literal" />
      </wsdl:output>
    </wsdl:operation>
    <wsdl:operation name="SetExecutionCredentials">
      <soap:operation
        soapAction="http://schemas.microsoft.com/sqlserver/2005/06/30/reporting/reportingservices/SetExecutionCredentials" style="document" />
      <wsdl:input>
        <soap:body use="literal" />
        <soap:header message="tns:SetExecutionCredentialsExecutionHeader"
          part="ExecutionHeader" use="literal" />
        <soap:header message="tns:SetExecutionCredentialsTrustedUserHeader"
          part="TrustedUserHeader" use="literal" />

```

```

    </wsdl:input>
    <wsdl:output>
      <soap:body use="literal" />
      <soap:header message="tns:SetExecutionCredentialsServerInfoHeader"
part="ServerInfoHeader" use="literal" />
    </wsdl:output>
  </wsdl:operation>
  <wsdl:operation name="SetExecutionCredentials2">
    <soap:operation
soapAction="http://schemas.microsoft.com/sqlserver/2005/06/30/reporting/reportingservices/Set
ExecutionCredentials2" style="document" />
    <wsdl:input>
      <soap:body use="literal" />
      <soap:header message="tns:SetExecutionCredentials2ExecutionHeader"
part="ExecutionHeader" use="literal" />
      <soap:header message="tns:SetExecutionCredentials2TrustedUserHeader"
part="TrustedUserHeader" use="literal" />
    </wsdl:input>
    <wsdl:output>
      <soap:body use="literal" />
      <soap:header message="tns:SetExecutionCredentials2ServerInfoHeader"
part="ServerInfoHeader" use="literal" />
    </wsdl:output>
  </wsdl:operation>
  <wsdl:operation name="SetExecutionParameters">
    <soap:operation
soapAction="http://schemas.microsoft.com/sqlserver/2005/06/30/reporting/reportingservices/Set
ExecutionParameters" style="document" />
    <wsdl:input>
      <soap:body use="literal" />
      <soap:header message="tns:SetExecutionParametersExecutionHeader"
part="ExecutionHeader" use="literal" />
      <soap:header message="tns:SetExecutionParametersTrustedUserHeader"
part="TrustedUserHeader" use="literal" />
    </wsdl:input>
    <wsdl:output>
      <soap:body use="literal" />
      <soap:header message="tns:SetExecutionParametersServerInfoHeader"
part="ServerInfoHeader" use="literal" />
    </wsdl:output>
  </wsdl:operation>
  <wsdl:operation name="SetExecutionParameters2">
    <soap:operation
soapAction="http://schemas.microsoft.com/sqlserver/2005/06/30/reporting/reportingservices/Set
ExecutionParameters2" style="document" />
    <wsdl:input>
      <soap:body use="literal" />
      <soap:header message="tns:SetExecutionParameters2ExecutionHeader"
part="ExecutionHeader" use="literal" />
      <soap:header message="tns:SetExecutionParameters2TrustedUserHeader"
part="TrustedUserHeader" use="literal" />
    </wsdl:input>
    <wsdl:output>
      <soap:body use="literal" />
      <soap:header message="tns:SetExecutionParameters2ServerInfoHeader"
part="ServerInfoHeader" use="literal" />
    </wsdl:output>
  </wsdl:operation>
  <wsdl:operation name="ResetExecution">

```

```

    <soap:operation
soapAction="http://schemas.microsoft.com/sqlserver/2005/06/30/reporting/reportingservices/Res
etExecution" style="document" />
    <wsdl:input>
        <soap:body use="literal" />
        <soap:header message="tns:ResetExecutionExecutionHeader" part="ExecutionHeader"
use="literal" />
        <soap:header message="tns:ResetExecutionTrustedUserHeader" part="TrustedUserHeader"
use="literal" />
    </wsdl:input>
    <wsdl:output>
        <soap:body use="literal" />
        <soap:header message="tns:ResetExecutionServerInfoHeader" part="ServerInfoHeader"
use="literal" />
    </wsdl:output>
</wsdl:operation>
<wsdl:operation name="ResetExecution2">
    <soap:operation
soapAction="http://schemas.microsoft.com/sqlserver/2005/06/30/reporting/reportingservices/Res
etExecution2" style="document" />
    <wsdl:input>
        <soap:body use="literal" />
        <soap:header message="tns:ResetExecution2ExecutionHeader" part="ExecutionHeader"
use="literal" />
        <soap:header message="tns:ResetExecution2TrustedUserHeader" part="TrustedUserHeader"
use="literal" />
    </wsdl:input>
    <wsdl:output>
        <soap:body use="literal" />
        <soap:header message="tns:ResetExecution2ServerInfoHeader" part="ServerInfoHeader"
use="literal" />
    </wsdl:output>
</wsdl:operation>
<wsdl:operation name="Render">
    <soap:operation
soapAction="http://schemas.microsoft.com/sqlserver/2005/06/30/reporting/reportingservices/Ren
der" style="document" />
    <wsdl:input>
        <soap:body use="literal" />
        <soap:header message="tns:RenderExecutionHeader" part="ExecutionHeader" use="literal"
/>
        <soap:header message="tns:RenderTrustedUserHeader" part="TrustedUserHeader"
use="literal" />
    </wsdl:input>
    <wsdl:output>
        <soap:body use="literal" />
        <soap:header message="tns:RenderServerInfoHeader" part="ServerInfoHeader"
use="literal" />
    </wsdl:output>
</wsdl:operation>
<wsdl:operation name="Render2">
    <soap:operation
soapAction="http://schemas.microsoft.com/sqlserver/2005/06/30/reporting/reportingservices/Ren
der2" style="document" />
    <wsdl:input>
        <soap:body use="literal" />
        <soap:header message="tns:Render2ExecutionHeader" part="ExecutionHeader"
use="literal" />
        <soap:header message="tns:Render2TrustedUserHeader" part="TrustedUserHeader"
use="literal" />
    </wsdl:input>

```

```

        <wsdl:output>
            <soap:body use="literal" />
            <soap:header message="tns:Render2ServerInfoHeader" part="ServerInfoHeader"
use="literal" />
        </wsdl:output>
    </wsdl:operation>
    <wsdl:operation name="RenderStream">
        <soap:operation
soapAction="http://schemas.microsoft.com/sqlserver/2005/06/30/reporting/reportingservices/RenderStream" style="document" />
        <wsdl:input>
            <soap:body use="literal" />
            <soap:header message="tns:RenderStreamExecutionHeader" part="ExecutionHeader"
use="literal" />
            <soap:header message="tns:RenderStreamTrustedUserHeader" part="TrustedUserHeader"
use="literal" />
        </wsdl:input>
        <wsdl:output>
            <soap:body use="literal" />
            <soap:header message="tns:RenderStreamServerInfoHeader" part="ServerInfoHeader"
use="literal" />
        </wsdl:output>
    </wsdl:operation>
    <wsdl:operation name="GetExecutionInfo">
        <soap:operation
soapAction="http://schemas.microsoft.com/sqlserver/2005/06/30/reporting/reportingservices/GetExecutionInfo" style="document" />
        <wsdl:input>
            <soap:body use="literal" />
            <soap:header message="tns:GetExecutionInfoExecutionHeader" part="ExecutionHeader"
use="literal" />
            <soap:header message="tns:GetExecutionInfoTrustedUserHeader" part="TrustedUserHeader"
use="literal" />
        </wsdl:input>
        <wsdl:output>
            <soap:body use="literal" />
            <soap:header message="tns:GetExecutionInfoServerInfoHeader" part="ServerInfoHeader"
use="literal" />
        </wsdl:output>
    </wsdl:operation>
    <wsdl:operation name="GetExecutionInfo2">
        <soap:operation
soapAction="http://schemas.microsoft.com/sqlserver/2005/06/30/reporting/reportingservices/GetExecutionInfo2" style="document" />
        <wsdl:input>
            <soap:body use="literal" />
            <soap:header message="tns:GetExecutionInfo2ExecutionHeader" part="ExecutionHeader"
use="literal" />
            <soap:header message="tns:GetExecutionInfo2TrustedUserHeader"
part="TrustedUserHeader" use="literal" />
        </wsdl:input>
        <wsdl:output>
            <soap:body use="literal" />
            <soap:header message="tns:GetExecutionInfo2ServerInfoHeader" part="ServerInfoHeader"
use="literal" />
        </wsdl:output>
    </wsdl:operation>
    <wsdl:operation name="GetDocumentMap">
        <soap:operation
soapAction="http://schemas.microsoft.com/sqlserver/2005/06/30/reporting/reportingservices/GetDocumentMap" style="document" />

```

```

    <wsdl:input>
      <soap:body use="literal" />
      <soap:header message="tns:GetDocumentMapExecutionHeader" part="ExecutionHeader"
use="literal" />
      <soap:header message="tns:GetDocumentMapTrustedUserHeader" part="TrustedUserHeader"
use="literal" />
    </wsdl:input>
    <wsdl:output>
      <soap:body use="literal" />
      <soap:header message="tns:GetDocumentMapServerInfoHeader" part="ServerInfoHeader"
use="literal" />
    </wsdl:output>
  </wsdl:operation>
  <wsdl:operation name="LoadDrillthroughTarget">
    <soap:operation
soapAction="http://schemas.microsoft.com/sqlserver/2005/06/30/reporting/reportingservices/Loa
dDrillthroughTarget" style="document" />
    <wsdl:input>
      <soap:body use="literal" />
      <soap:header message="tns:LoadDrillthroughTargetExecutionHeader"
part="ExecutionHeader" use="literal" />
      <soap:header message="tns:LoadDrillthroughTargetTrustedUserHeader"
part="TrustedUserHeader" use="literal" />
    </wsdl:input>
    <wsdl:output>
      <soap:body use="literal" />
      <soap:header message="tns:LoadDrillthroughTargetExecutionHeader"
part="ExecutionHeader" use="literal" />
      <soap:header message="tns:LoadDrillthroughTargetServerInfoHeader"
part="ServerInfoHeader" use="literal" />
    </wsdl:output>
  </wsdl:operation>
  <wsdl:operation name="LoadDrillthroughTarget2">
    <soap:operation
soapAction="http://schemas.microsoft.com/sqlserver/2005/06/30/reporting/reportingservices/Loa
dDrillthroughTarget2" style="document" />
    <wsdl:input>
      <soap:body use="literal" />
      <soap:header message="tns:LoadDrillthroughTarget2ExecutionHeader"
part="ExecutionHeader" use="literal" />
      <soap:header message="tns:LoadDrillthroughTarget2TrustedUserHeader"
part="TrustedUserHeader" use="literal" />
    </wsdl:input>
    <wsdl:output>
      <soap:body use="literal" />
      <soap:header message="tns:LoadDrillthroughTarget2ExecutionHeader"
part="ExecutionHeader" use="literal" />
      <soap:header message="tns:LoadDrillthroughTarget2ServerInfoHeader"
part="ServerInfoHeader" use="literal" />
    </wsdl:output>
  </wsdl:operation>
  <wsdl:operation name="ToggleItem">
    <soap:operation
soapAction="http://schemas.microsoft.com/sqlserver/2005/06/30/reporting/reportingservices/Tog
gleItem" style="document" />
    <wsdl:input>
      <soap:body use="literal" />
      <soap:header message="tns:ToggleItemExecutionHeader" part="ExecutionHeader"
use="literal" />
      <soap:header message="tns:ToggleItemTrustedUserHeader" part="TrustedUserHeader"
use="literal" />

```



```

    </wsdl:input>
    <wsdl:output>
      <soap:body use="literal" />
      <soap:header message="tns:ToggleItemServerInfoHeader" part="ServerInfoHeader"
use="literal" />
    </wsdl:output>
  </wsdl:operation>
  <wsdl:operation name="NavigateDocumentMap">
    <soap:operation
soapAction="http://schemas.microsoft.com/sqlserver/2005/06/30/reporting/reportingservices/Nav
igateDocumentMap" style="document" />
    <wsdl:input>
      <soap:body use="literal" />
      <soap:header message="tns:NavigateDocumentMapExecutionHeader" part="ExecutionHeader"
use="literal" />
      <soap:header message="tns:NavigateDocumentMapTrustedUserHeader"
part="TrustedUserHeader" use="literal" />
    </wsdl:input>
    <wsdl:output>
      <soap:body use="literal" />
      <soap:header message="tns:NavigateDocumentMapServerInfoHeader"
part="ServerInfoHeader" use="literal" />
    </wsdl:output>
  </wsdl:operation>
  <wsdl:operation name="NavigateBookmark">
    <soap:operation
soapAction="http://schemas.microsoft.com/sqlserver/2005/06/30/reporting/reportingservices/Nav
igateBookmark" style="document" />
    <wsdl:input>
      <soap:body use="literal" />
      <soap:header message="tns:NavigateBookmarkExecutionHeader" part="ExecutionHeader"
use="literal" />
      <soap:header message="tns:NavigateBookmarkTrustedUserHeader" part="TrustedUserHeader"
use="literal" />
    </wsdl:input>
    <wsdl:output>
      <soap:body use="literal" />
      <soap:header message="tns:NavigateBookmarkServerInfoHeader" part="ServerInfoHeader"
use="literal" />
    </wsdl:output>
  </wsdl:operation>
  <wsdl:operation name="FindString">
    <soap:operation
soapAction="http://schemas.microsoft.com/sqlserver/2005/06/30/reporting/reportingservices/Fin
dString" style="document" />
    <wsdl:input>
      <soap:body use="literal" />
      <soap:header message="tns:FindStringExecutionHeader" part="ExecutionHeader"
use="literal" />
      <soap:header message="tns:FindStringTrustedUserHeader" part="TrustedUserHeader"
use="literal" />
    </wsdl:input>
    <wsdl:output>
      <soap:body use="literal" />
      <soap:header message="tns:FindStringServerInfoHeader" part="ServerInfoHeader"
use="literal" />
    </wsdl:output>
  </wsdl:operation>
  <wsdl:operation name="Sort">

```

```

    <soap:operation
soapAction="http://schemas.microsoft.com/sqlserver/2005/06/30/reporting/reportingservices/Sort" style="document" />
    <wsdl:input>
        <soap:body use="literal" />
        <soap:header message="tns:SortExecutionHeader" part="ExecutionHeader" use="literal"
/>
    <soap:header message="tns:SortTrustedUserHeader" part="TrustedUserHeader"
use="literal" />
    </wsdl:input>
    <wsdl:output>
        <soap:body use="literal" />
        <soap:header message="tns:SortServerInfoHeader" part="ServerInfoHeader" use="literal"
/>
    </wsdl:output>
</wsdl:operation>
<wsdl:operation name="Sort2">
    <soap:operation
soapAction="http://schemas.microsoft.com/sqlserver/2005/06/30/reporting/reportingservices/Sort2" style="document" />
    <wsdl:input>
        <soap:body use="literal" />
        <soap:header message="tns:Sort2ExecutionHeader" part="ExecutionHeader" use="literal"
/>
    <soap:header message="tns:Sort2TrustedUserHeader" part="TrustedUserHeader"
use="literal" />
    </wsdl:input>
    <wsdl:output>
        <soap:body use="literal" />
        <soap:header message="tns:Sort2ServerInfoHeader" part="ServerInfoHeader"
use="literal" />
    </wsdl:output>
</wsdl:operation>
<wsdl:operation name="GetRenderResource">
    <soap:operation
soapAction="http://schemas.microsoft.com/sqlserver/2005/06/30/reporting/reportingservices/GetRenderResource" style="document" />
    <wsdl:input>
        <soap:body use="literal" />
        <soap:header message="tns:GetRenderResourceTrustedUserHeader"
part="TrustedUserHeader" use="literal" />
    </wsdl:input>
    <wsdl:output>
        <soap:body use="literal" />
        <soap:header message="tns:GetRenderResourceServerInfoHeader" part="ServerInfoHeader"
use="literal" />
    </wsdl:output>
</wsdl:operation>
<wsdl:operation name="ListRenderingExtensions">
    <soap:operation
soapAction="http://schemas.microsoft.com/sqlserver/2005/06/30/reporting/reportingservices/ListRenderingExtensions" style="document" />
    <wsdl:input>
        <soap:body use="literal" />
        <soap:header message="tns:ListRenderingExtensionsTrustedUserHeader"
part="TrustedUserHeader" use="literal" />
    </wsdl:input>
    <wsdl:output>
        <soap:body use="literal" />
        <soap:header message="tns:ListRenderingExtensionsServerInfoHeader"
part="ServerInfoHeader" use="literal" />

```

```

        </wsdl:output>
    </wsdl:operation>
    <wsdl:operation name="LogonUser">
        <soap:operation
soapAction="http://schemas.microsoft.com/sqlserver/2005/06/30/reporting/reportingservices/Log
onUser" style="document" />
        <wsdl:input>
            <soap:body use="literal" />
        </wsdl:input>
        <wsdl:output>
            <soap:body use="literal" />
            <soap:header message="tns:LogonUserServerInfoHeader" part="ServerInfoHeader"
use="literal" />
        </wsdl:output>
    </wsdl:operation>
    <wsdl:operation name="Logoff">
        <soap:operation
soapAction="http://schemas.microsoft.com/sqlserver/2005/06/30/reporting/reportingservices/Log
off" style="document" />
        <wsdl:input>
            <soap:body use="literal" />
        </wsdl:input>
        <wsdl:output>
            <soap:body use="literal" />
            <soap:header message="tns:LogoffServerInfoHeader" part="ServerInfoHeader"
use="literal" />
        </wsdl:output>
    </wsdl:operation>
</wsdl:binding>
<wsdl:binding name="ReportExecutionServiceSoap12" type="tns:ReportExecutionServiceSoap">
    <soap12:binding transport="http://schemas.xmlsoap.org/soap/http" />
    <wsdl:operation name="ListSecureMethods">
        <soap12:operation
soapAction="http://schemas.microsoft.com/sqlserver/2005/06/30/reporting/reportingservices/Lis
tSecureMethods" style="document" />
        <wsdl:input>
            <soap12:body use="literal" />
            <soap12:header message="tns:ListSecureMethodsTrustedUserHeader"
part="TrustedUserHeader" use="literal" />
        </wsdl:input>
        <wsdl:output>
            <soap12:body use="literal" />
            <soap12:header message="tns:ListSecureMethodsServerInfoHeader"
part="ServerInfoHeader" use="literal" />
        </wsdl:output>
    </wsdl:operation>
    <wsdl:operation name="LoadReport">
        <soap12:operation
soapAction="http://schemas.microsoft.com/sqlserver/2005/06/30/reporting/reportingservices/Loa
dReport" style="document" />
        <wsdl:input>
            <soap12:body use="literal" />
            <soap12:header message="tns:LoadReportTrustedUserHeader" part="TrustedUserHeader"
use="literal" />
        </wsdl:input>
        <wsdl:output>
            <soap12:body use="literal" />
            <soap12:header message="tns:LoadReportExecutionHeader" part="ExecutionHeader"
use="literal" />
        </wsdl:output>
    </wsdl:operation>

```

```

        <soap12:header message="tns:LoadReportServerInfoHeader" part="ServerInfoHeader"
use="literal" />
    </wsdl:output>
</wsdl:operation>
<wsdl:operation name="LoadReport2">
    <soap12:operation
soapAction="http://schemas.microsoft.com/sqlserver/2005/06/30/reporting/reportingservices/Loa
dReport2" style="document" />
    <wsdl:input>
        <soap12:body use="literal" />
        <soap12:header message="tns:LoadReport2TrustedUserHeader" part="TrustedUserHeader"
use="literal" />
    </wsdl:input>
    <wsdl:output>
        <soap12:body use="literal" />
        <soap12:header message="tns:LoadReport2ExecutionHeader" part="ExecutionHeader"
use="literal" />
        <soap12:header message="tns:LoadReport2ServerInfoHeader" part="ServerInfoHeader"
use="literal" />
    </wsdl:output>
</wsdl:operation>
<wsdl:operation name="LoadReportDefinition">
    <soap12:operation
soapAction="http://schemas.microsoft.com/sqlserver/2005/06/30/reporting/reportingservices/Loa
dReportDefinition" style="document" />
    <wsdl:input>
        <soap12:body use="literal" />
        <soap12:header message="tns:LoadReportDefinitionTrustedUserHeader"
part="TrustedUserHeader" use="literal" />
    </wsdl:input>
    <wsdl:output>
        <soap12:body use="literal" />
        <soap12:header message="tns:LoadReportDefinitionExecutionHeader"
part="ExecutionHeader" use="literal" />
        <soap12:header message="tns:LoadReportDefinitionServerInfoHeader"
part="ServerInfoHeader" use="literal" />
    </wsdl:output>
</wsdl:operation>
<wsdl:operation name="LoadReportDefinition2">
    <soap12:operation
soapAction="http://schemas.microsoft.com/sqlserver/2005/06/30/reporting/reportingservices/Loa
dReportDefinition2" style="document" />
    <wsdl:input>
        <soap12:body use="literal" />
        <soap12:header message="tns:LoadReportDefinition2TrustedUserHeader"
part="TrustedUserHeader" use="literal" />
    </wsdl:input>
    <wsdl:output>
        <soap12:body use="literal" />
        <soap12:header message="tns:LoadReportDefinition2ExecutionHeader"
part="ExecutionHeader" use="literal" />
        <soap12:header message="tns:LoadReportDefinition2ServerInfoHeader"
part="ServerInfoHeader" use="literal" />
    </wsdl:output>
</wsdl:operation>
<wsdl:operation name="SetExecutionCredentials">
    <soap12:operation
soapAction="http://schemas.microsoft.com/sqlserver/2005/06/30/reporting/reportingservices/Set
ExecutionCredentials" style="document" />
    <wsdl:input>
        <soap12:body use="literal" />

```

```

        <soap12:header message="tns:SetExecutionCredentialsExecutionHeader"
part="ExecutionHeader" use="literal" />
        <soap12:header message="tns:SetExecutionCredentialsTrustedUserHeader"
part="TrustedUserHeader" use="literal" />
    </wsdl:input>
    <wsdl:output>
        <soap12:body use="literal" />
        <soap12:header message="tns:SetExecutionCredentialsServerInfoHeader"
part="ServerInfoHeader" use="literal" />
    </wsdl:output>
</wsdl:operation>
<wsdl:operation name="SetExecutionCredentials2">
    <soap12:operation
soapAction="http://schemas.microsoft.com/sqlserver/2005/06/30/reporting/reportingservices/Set
ExecutionCredentials2" style="document" />
    <wsdl:input>
        <soap12:body use="literal" />
        <soap12:header message="tns:SetExecutionCredentials2ExecutionHeader"
part="ExecutionHeader" use="literal" />
        <soap12:header message="tns:SetExecutionCredentials2TrustedUserHeader"
part="TrustedUserHeader" use="literal" />
    </wsdl:input>
    <wsdl:output>
        <soap12:body use="literal" />
        <soap12:header message="tns:SetExecutionCredentials2ServerInfoHeader"
part="ServerInfoHeader" use="literal" />
    </wsdl:output>
</wsdl:operation>
<wsdl:operation name="SetExecutionParameters">
    <soap12:operation
soapAction="http://schemas.microsoft.com/sqlserver/2005/06/30/reporting/reportingservices/Set
ExecutionParameters" style="document" />
    <wsdl:input>
        <soap12:body use="literal" />
        <soap12:header message="tns:SetExecutionParametersExecutionHeader"
part="ExecutionHeader" use="literal" />
        <soap12:header message="tns:SetExecutionParametersTrustedUserHeader"
part="TrustedUserHeader" use="literal" />
    </wsdl:input>
    <wsdl:output>
        <soap12:body use="literal" />
        <soap12:header message="tns:SetExecutionParametersServerInfoHeader"
part="ServerInfoHeader" use="literal" />
    </wsdl:output>
</wsdl:operation>
<wsdl:operation name="SetExecutionParameters2">
    <soap12:operation
soapAction="http://schemas.microsoft.com/sqlserver/2005/06/30/reporting/reportingservices/Set
ExecutionParameters2" style="document" />
    <wsdl:input>
        <soap12:body use="literal" />
        <soap12:header message="tns:SetExecutionParameters2ExecutionHeader"
part="ExecutionHeader" use="literal" />
        <soap12:header message="tns:SetExecutionParameters2TrustedUserHeader"
part="TrustedUserHeader" use="literal" />
    </wsdl:input>
    <wsdl:output>
        <soap12:body use="literal" />
        <soap12:header message="tns:SetExecutionParameters2ServerInfoHeader"
part="ServerInfoHeader" use="literal" />
    </wsdl:output>

```

```

    </wsdl:operation>
    <wsdl:operation name="ResetExecution">
      <soap12:operation
        soapAction="http://schemas.microsoft.com/sqlserver/2005/06/30/reporting/reportingservices/ResetExecution" style="document" />
      <wsdl:input>
        <soap12:body use="literal" />
        <soap12:header message="tns:ResetExecutionExecutionHeader" part="ExecutionHeader"
          use="literal" />
        <soap12:header message="tns:ResetExecutionTrustedUserHeader" part="TrustedUserHeader"
          use="literal" />
      </wsdl:input>
      <wsdl:output>
        <soap12:body use="literal" />
        <soap12:header message="tns:ResetExecutionServerInfoHeader" part="ServerInfoHeader"
          use="literal" />
      </wsdl:output>
    </wsdl:operation>
    <wsdl:operation name="ResetExecution2">
      <soap12:operation
        soapAction="http://schemas.microsoft.com/sqlserver/2005/06/30/reporting/reportingservices/ResetExecution2" style="document" />
      <wsdl:input>
        <soap12:body use="literal" />
        <soap12:header message="tns:ResetExecution2ExecutionHeader" part="ExecutionHeader"
          use="literal" />
        <soap12:header message="tns:ResetExecution2TrustedUserHeader"
          part="TrustedUserHeader" use="literal" />
      </wsdl:input>
      <wsdl:output>
        <soap12:body use="literal" />
        <soap12:header message="tns:ResetExecution2ServerInfoHeader" part="ServerInfoHeader"
          use="literal" />
      </wsdl:output>
    </wsdl:operation>
    <wsdl:operation name="Render">
      <soap12:operation
        soapAction="http://schemas.microsoft.com/sqlserver/2005/06/30/reporting/reportingservices/Render" style="document" />
      <wsdl:input>
        <soap12:body use="literal" />
        <soap12:header message="tns:RenderExecutionHeader" part="ExecutionHeader"
          use="literal" />
        <soap12:header message="tns:RenderTrustedUserHeader" part="TrustedUserHeader"
          use="literal" />
      </wsdl:input>
      <wsdl:output>
        <soap12:body use="literal" />
        <soap12:header message="tns:RenderServerInfoHeader" part="ServerInfoHeader"
          use="literal" />
      </wsdl:output>
    </wsdl:operation>
    <wsdl:operation name="Render2">
      <soap12:operation
        soapAction="http://schemas.microsoft.com/sqlserver/2005/06/30/reporting/reportingservices/Render2" style="document" />
      <wsdl:input>
        <soap12:body use="literal" />
        <soap12:header message="tns:Render2ExecutionHeader" part="ExecutionHeader"
          use="literal" />

```

```

        <soap12:header message="tns:Render2TrustedUserHeader" part="TrustedUserHeader"
use="literal" />
        </wsdl:input>
        <wsdl:output>
            <soap12:body use="literal" />
            <soap12:header message="tns:Render2ServerInfoHeader" part="ServerInfoHeader"
use="literal" />
        </wsdl:output>
    </wsdl:operation>
    <wsdl:operation name="RenderStream">
        <soap12:operation
soapAction="http://schemas.microsoft.com/sqlserver/2005/06/30/reporting/reportingservices/RenderStream" style="document" />
        <wsdl:input>
            <soap12:body use="literal" />
            <soap12:header message="tns:RenderStreamExecutionHeader" part="ExecutionHeader"
use="literal" />
            <soap12:header message="tns:RenderStreamTrustedUserHeader" part="TrustedUserHeader"
use="literal" />
        </wsdl:input>
        <wsdl:output>
            <soap12:body use="literal" />
            <soap12:header message="tns:RenderStreamServerInfoHeader" part="ServerInfoHeader"
use="literal" />
        </wsdl:output>
    </wsdl:operation>
    <wsdl:operation name="GetExecutionInfo">
        <soap12:operation
soapAction="http://schemas.microsoft.com/sqlserver/2005/06/30/reporting/reportingservices/GetExecutionInfo" style="document" />
        <wsdl:input>
            <soap12:body use="literal" />
            <soap12:header message="tns:GetExecutionInfoExecutionHeader" part="ExecutionHeader"
use="literal" />
            <soap12:header message="tns:GetExecutionInfoTrustedUserHeader"
part="TrustedUserHeader" use="literal" />
        </wsdl:input>
        <wsdl:output>
            <soap12:body use="literal" />
            <soap12:header message="tns:GetExecutionInfoServerInfoHeader" part="ServerInfoHeader"
use="literal" />
        </wsdl:output>
    </wsdl:operation>
    <wsdl:operation name="GetExecutionInfo2">
        <soap12:operation
soapAction="http://schemas.microsoft.com/sqlserver/2005/06/30/reporting/reportingservices/GetExecutionInfo2" style="document" />
        <wsdl:input>
            <soap12:body use="literal" />
            <soap12:header message="tns:GetExecutionInfo2ExecutionHeader" part="ExecutionHeader"
use="literal" />
            <soap12:header message="tns:GetExecutionInfo2TrustedUserHeader"
part="TrustedUserHeader" use="literal" />
        </wsdl:input>
        <wsdl:output>
            <soap12:body use="literal" />
            <soap12:header message="tns:GetExecutionInfo2ServerInfoHeader"
part="ServerInfoHeader" use="literal" />
        </wsdl:output>
    </wsdl:operation>

```

```

    <wsdl:operation name="GetDocumentMap">
      <soap12:operation
        soapAction="http://schemas.microsoft.com/sqlserver/2005/06/30/reporting/reportingservices/Get
        DocumentMap" style="document" />
      <wsdl:input>
        <soap12:body use="literal" />
        <soap12:header message="tns:GetDocumentMapExecutionHeader" part="ExecutionHeader"
        use="literal" />
        <soap12:header message="tns:GetDocumentMapTrustedUserHeader" part="TrustedUserHeader"
        use="literal" />
      </wsdl:input>
      <wsdl:output>
        <soap12:body use="literal" />
        <soap12:header message="tns:GetDocumentMapServerInfoHeader" part="ServerInfoHeader"
        use="literal" />
      </wsdl:output>
    </wsdl:operation>
    <wsdl:operation name="LoadDrillthroughTarget">
      <soap12:operation
        soapAction="http://schemas.microsoft.com/sqlserver/2005/06/30/reporting/reportingservices/Loa
        dDrillthroughTarget" style="document" />
      <wsdl:input>
        <soap12:body use="literal" />
        <soap12:header message="tns:LoadDrillthroughTargetExecutionHeader"
        part="ExecutionHeader" use="literal" />
        <soap12:header message="tns:LoadDrillthroughTargetTrustedUserHeader"
        part="TrustedUserHeader" use="literal" />
      </wsdl:input>
      <wsdl:output>
        <soap12:body use="literal" />
        <soap12:header message="tns:LoadDrillthroughTargetExecutionHeader"
        part="ExecutionHeader" use="literal" />
        <soap12:header message="tns:LoadDrillthroughTargetServerInfoHeader"
        part="ServerInfoHeader" use="literal" />
      </wsdl:output>
    </wsdl:operation>
    <wsdl:operation name="LoadDrillthroughTarget2">
      <soap12:operation
        soapAction="http://schemas.microsoft.com/sqlserver/2005/06/30/reporting/reportingservices/Loa
        dDrillthroughTarget2" style="document" />
      <wsdl:input>
        <soap12:body use="literal" />
        <soap12:header message="tns:LoadDrillthroughTarget2ExecutionHeader"
        part="ExecutionHeader" use="literal" />
        <soap12:header message="tns:LoadDrillthroughTarget2TrustedUserHeader"
        part="TrustedUserHeader" use="literal" />
      </wsdl:input>
      <wsdl:output>
        <soap12:body use="literal" />
        <soap12:header message="tns:LoadDrillthroughTarget2ExecutionHeader"
        part="ExecutionHeader" use="literal" />
        <soap12:header message="tns:LoadDrillthroughTarget2ServerInfoHeader"
        part="ServerInfoHeader" use="literal" />
      </wsdl:output>
    </wsdl:operation>
    <wsdl:operation name="ToggleItem">
      <soap12:operation
        soapAction="http://schemas.microsoft.com/sqlserver/2005/06/30/reporting/reportingservices/Tog
        gleItem" style="document" />
      <wsdl:input>
        <soap12:body use="literal" />

```



```

        <soap12:header message="tns:ToggleItemExecutionHeader" part="ExecutionHeader"
use="literal" />
        <soap12:header message="tns:ToggleItemTrustedUserHeader" part="TrustedUserHeader"
use="literal" />
        </wsdl:input>
        <wsdl:output>
        <soap12:body use="literal" />
        <soap12:header message="tns:ToggleItemServerInfoHeader" part="ServerInfoHeader"
use="literal" />
        </wsdl:output>
    </wsdl:operation>
    <wsdl:operation name="NavigateDocumentMap">
        <soap12:operation
soapAction="http://schemas.microsoft.com/sqlserver/2005/06/30/reporting/reportingservices/Nav
igateDocumentMap" style="document" />
        <wsdl:input>
        <soap12:body use="literal" />
        <soap12:header message="tns:NavigateDocumentMapExecutionHeader"
part="ExecutionHeader" use="literal" />
        <soap12:header message="tns:NavigateDocumentMapTrustedUserHeader"
part="TrustedUserHeader" use="literal" />
        </wsdl:input>
        <wsdl:output>
        <soap12:body use="literal" />
        <soap12:header message="tns:NavigateDocumentMapServerInfoHeader"
part="ServerInfoHeader" use="literal" />
        </wsdl:output>
    </wsdl:operation>
    <wsdl:operation name="NavigateBookmark">
        <soap12:operation
soapAction="http://schemas.microsoft.com/sqlserver/2005/06/30/reporting/reportingservices/Nav
igateBookmark" style="document" />
        <wsdl:input>
        <soap12:body use="literal" />
        <soap12:header message="tns:NavigateBookmarkExecutionHeader" part="ExecutionHeader"
use="literal" />
        <soap12:header message="tns:NavigateBookmarkTrustedUserHeader"
part="TrustedUserHeader" use="literal" />
        </wsdl:input>
        <wsdl:output>
        <soap12:body use="literal" />
        <soap12:header message="tns:NavigateBookmarkServerInfoHeader" part="ServerInfoHeader"
use="literal" />
        </wsdl:output>
    </wsdl:operation>
    <wsdl:operation name="FindString">
        <soap12:operation
soapAction="http://schemas.microsoft.com/sqlserver/2005/06/30/reporting/reportingservices/Fin
dString" style="document" />
        <wsdl:input>
        <soap12:body use="literal" />
        <soap12:header message="tns:FindStringExecutionHeader" part="ExecutionHeader"
use="literal" />
        <soap12:header message="tns:FindStringTrustedUserHeader" part="TrustedUserHeader"
use="literal" />
        </wsdl:input>
        <wsdl:output>
        <soap12:body use="literal" />
        <soap12:header message="tns:FindStringServerInfoHeader" part="ServerInfoHeader"
use="literal" />
        </wsdl:output>

```

```

    </wsdl:operation>
    <wsdl:operation name="Sort">
      <soap12:operation
soapAction="http://schemas.microsoft.com/sqlserver/2005/06/30/reporting/reportingservices/Sort"
style="document" />
      <wsdl:input>
        <soap12:body use="literal" />
        <soap12:header message="tns:SortExecutionHeader" part="ExecutionHeader" use="literal"
/>
        <soap12:header message="tns:SortTrustedUserHeader" part="TrustedUserHeader"
use="literal" />
      </wsdl:input>
      <wsdl:output>
        <soap12:body use="literal" />
        <soap12:header message="tns:SortServerInfoHeader" part="ServerInfoHeader"
use="literal" />
      </wsdl:output>
    </wsdl:operation>
    <wsdl:operation name="Sort2">
      <soap12:operation
soapAction="http://schemas.microsoft.com/sqlserver/2005/06/30/reporting/reportingservices/Sort2"
style="document" />
      <wsdl:input>
        <soap12:body use="literal" />
        <soap12:header message="tns:Sort2ExecutionHeader" part="ExecutionHeader"
use="literal" />
        <soap12:header message="tns:Sort2TrustedUserHeader" part="TrustedUserHeader"
use="literal" />
      </wsdl:input>
      <wsdl:output>
        <soap12:body use="literal" />
        <soap12:header message="tns:Sort2ServerInfoHeader" part="ServerInfoHeader"
use="literal" />
      </wsdl:output>
    </wsdl:operation>
    <wsdl:operation name="GetRenderResource">
      <soap12:operation
soapAction="http://schemas.microsoft.com/sqlserver/2005/06/30/reporting/reportingservices/GetRenderResource"
style="document" />
      <wsdl:input>
        <soap12:body use="literal" />
        <soap12:header message="tns:GetRenderResourceTrustedUserHeader"
part="TrustedUserHeader" use="literal" />
      </wsdl:input>
      <wsdl:output>
        <soap12:body use="literal" />
        <soap12:header message="tns:GetRenderResourceServerInfoHeader"
part="ServerInfoHeader" use="literal" />
      </wsdl:output>
    </wsdl:operation>
    <wsdl:operation name="ListRenderingExtensions">
      <soap12:operation
soapAction="http://schemas.microsoft.com/sqlserver/2005/06/30/reporting/reportingservices/ListRenderingExtensions"
style="document" />
      <wsdl:input>
        <soap12:body use="literal" />
        <soap12:header message="tns:ListRenderingExtensionsTrustedUserHeader"
part="TrustedUserHeader" use="literal" />
      </wsdl:input>
      <wsdl:output>

```

```

        <soap12:body use="literal" />
        <soap12:header message="tns:ListRenderingExtensionsServerInfoHeader"
part="ServerInfoHeader" use="literal" />
    </wsdl:output>
</wsdl:operation>
<wsdl:operation name="LogonUser">
    <soap12:operation
soapAction="http://schemas.microsoft.com/sqlserver/2005/06/30/reporting/reportingservices/Log
onUser" style="document" />
    <wsdl:input>
        <soap12:body use="literal" />
    </wsdl:input>
    <wsdl:output>
        <soap12:body use="literal" />
    <soap12:header message="tns:LogonUserServerInfoHeader" part="ServerInfoHeader"
use="literal" />
    </wsdl:output>
</wsdl:operation>
<wsdl:operation name="Logoff">
    <soap12:operation
soapAction="http://schemas.microsoft.com/sqlserver/2005/06/30/reporting/reportingservices/Log
off" style="document" />
    <wsdl:input>
        <soap12:body use="literal" />
    </wsdl:input>
    <wsdl:output>
        <soap12:body use="literal" />
    <soap12:header message="tns:LogoffServerInfoHeader" part="ServerInfoHeader"
use="literal" />
    </wsdl:output>
</wsdl:operation>
</wsdl:binding>
<wsdl:service name="ReportExecutionService">
    <wsdl:documentation xmlns:wsc="http://schemas.xmlsoap.org/wsdl/">The Reporting Services
Execution Service enables report execution</wsdl:documentation>
    <wsdl:port name="ReportExecutionServiceSoap" binding="tns:ReportExecutionServiceSoap">
        <soap:address location="%ReportServerServiceObjectURL%" />
    </wsdl:port>
    <wsdl:port name="ReportExecutionServiceSoap12"
binding="tns:ReportExecutionServiceSoap12">
        <soap12:address location="%ReportServerServiceObjectURL%" />
    </wsdl:port>
</wsdl:service>
</wsdl:definitions>

```

## 4 Appendix B: Product Behavior

The information in this specification is applicable to the following Microsoft products:

- Microsoft® SQL Server® 2005
- Microsoft® SQL Server® 2008
- Microsoft® SQL Server® 2008 R2

Exceptions, if any, are noted below. If a service pack number appears with the product version, behavior changed in that service pack. The new behavior also applies to subsequent service packs of the product unless otherwise specified.

Unless otherwise specified, any statement of optional behavior in this specification prescribed using the terms SHOULD or SHOULD NOT implies product behavior in accordance with the SHOULD or SHOULD NOT prescription. Unless otherwise specified, the term MAY implies that product does not follow the prescription.

<1> [Section 1.3](#): SQL Server 2008 R2 supports SOAP 1.1 [\[SOAP1.1\]](#) and SOAP 1.2 [\[SOAP1.2\]](#). SQL Server 2005 and SQL Server 2008 support SOAP 1.1; SOAP 1.2 is not fully supported.

<2> [Section 2.1](#): SQL Server 2008 R2 supports SOAP 1.1 [\[SOAP1.1\]](#) and SOAP 1.2 [\[SOAP1.2\]](#). SQL Server 2005 and SQL Server 2008 support SOAP 1.1; SOAP 1.2 is not fully supported.

## 5 Change Tracking

This section identifies changes that were made to the [MS-RSWSRE2005] protocol document between the June 2010 and September 2010 releases. Changes are classified as New, Major, Minor, Editorial, or No change.

The revision class **New** means that a new document is being released.

The revision class **Major** means that the technical content in the document was significantly revised. Major changes affect protocol interoperability or implementation. Examples of major changes are:

- A document revision that incorporates changes to interoperability requirements or functionality.
- An extensive rewrite, addition, or deletion of major portions of content.
- Changes made for template compliance.
- Removal of a document from the documentation set.

The revision class **Minor** means that the meaning of the technical content was clarified. Minor changes do not affect protocol interoperability or implementation. Examples of minor changes are updates to clarify ambiguity at the sentence, paragraph, or table level.

The revision class **Editorial** means that the language and formatting in the technical content was changed. Editorial changes apply to grammatical, formatting, and style issues.

The revision class **No change** means that no new technical or language changes were introduced. The technical content of the document is identical to the last released version, but minor editorial and formatting changes, as well as updates to the header and footer information, and to the revision summary, may have been made.

Major and minor changes can be described further using the following change types:

- New content added.
- Content updated.
- Content removed.
- New product behavior note added.
- Product behavior note updated.
- Product behavior note removed.
- New protocol syntax added.
- Protocol syntax updated.
- Protocol syntax removed.
- New content added due to protocol revision.
- Content updated due to protocol revision.
- Content removed due to protocol revision.
- New protocol syntax added due to protocol revision.

- Protocol syntax updated due to protocol revision.
- Protocol syntax removed due to protocol revision.
- New content added for template compliance.
- Content updated for template compliance.
- Content removed for template compliance.
- Obsolete document removed.

Editorial changes are always classified with the change type "Editorially updated."

Some important terms used in revision type descriptions are defined as follows:

- **Protocol syntax** refers to data elements (such as packets, structures, enumerations, and methods) as well as interfaces.
- **Protocol revision** refers to changes made to a protocol that affect the bits that are sent over the wire.

The changes made to this document are listed in the following table. For more information, please contact [protocol@microsoft.com](mailto:protocol@microsoft.com).

Section	Tracking number (if applicable) and description	Major change (Y or N)	Change Type
<a href="#">1.3 Protocol Overview (Synopsis)</a>	451691 Clarified that the protocol supports SOAP 1.2.	N	Content updated.
<a href="#">2.1 Transport</a>	451691 Clarified that the protocol supports SOAP 1.2.	N	Content updated.

## 6 Index

### A

[Applicability statement](#) 8  
authentication ([section 1.3](#) 5, [section 1.5](#) 7)

### C

[Change tracking](#) 53  
[channel encryption](#) 5  
[classes](#) 9

### D

[data types](#) 9  
[DataSourceCredentials type](#) 12  
[DataSourcePrompt type](#) 12  
[DocumentMapNode type](#) 12

### E

[enumerations](#) 9  
[ExecutionHeader SOAP header](#) 13  
[ExecutionInfo type](#) 12  
[ExecutionInfo2 type](#) 12  
[Extension type](#) 12  
[ExtensionTypeEnum type](#) 12

### F

[FindString method](#) 11

### G

[GetDocumentMap method](#) 11  
[GetExecutionInfo method](#) 11  
[GetExecutionInfo2](#) 11  
[GetRenderResource method](#) 11

### H

[HTTP protocol](#) 5  
[HTTPS protocol](#) 5

### I

[informative references](#) 5  
[inherited classes](#) 9

### L

[ListRenderingExtensions method](#) 11  
[ListSecureMethods](#) 11  
[LoadDrillthroughTarget method](#) 11  
[LoadDrillthroughTarget2 method](#) 11  
[LoadReport method](#) 11  
[LoadReport2 method](#) 11  
[LoadReportDefinition method](#) 11  
[LoadReportDefinition2 method](#) 11

[Logoff method](#) 11  
[LogonUser method](#) 11

### M

[mapping types](#) 9  
Messages ([section 2](#) 9, [section 2.2](#) 9)  
methods ([section 2.2](#) 9, [section 2.2.2](#) 11)

### N

[namespaces](#) 10  
[NavigateBookmark method](#) 11  
[NavigateDocumentMap method](#) 11  
[normative references](#) 4

### O

[out parameters](#) 9

### P

[PageCountMode type](#) 12  
[PageSettings type](#) 12  
[ParameterStateEnum type](#) 12  
[ParameterTypeEnum type](#) 12  
[ParameterValue type](#) 12  
[ParameterValueOrFieldReference type](#) 12  
[prescriptive API references](#) 5  
[protocol server endpoint](#) 7  
[protocols](#) 7  
[public properties](#) 9

### R

references  
[informative](#) 5  
[normative](#) 4  
[prescriptive](#) 5  
[Render method](#) 11  
[Render2 method](#) 11  
[RenderStream method](#) 11  
[report server](#) 5  
ReportExecution2005  
[about](#) 5  
[classes](#) 9  
[data types](#) 9  
[messages](#) 9  
methods ([section 2.2](#) 9, [section 2.2.2](#) 11)  
[protocol server endpoint](#) 7  
[protocols](#) 7  
[security](#) 5  
supported transports ([section 1.7](#) 8, [section 2.1](#) 9)  
[types](#) 12  
[ReportMargins type](#) 12  
[ReportPaperSize type](#) 12  
[ReportParameter type](#) 12

[ResetExecution method](#) 11  
[ResetExecution2 method](#) 11

## S

[security](#) 5  
[ServerInfoHeader SOAP header](#) 13  
[SetExecutionCredentials method](#) 11  
[SetExecutionCredentials2 method](#) 11  
[SetExecutionParameters method](#) 11  
[SetExecutionParameters2 method](#) 11  
[SOAP headers](#) 13  
SOAP over HTTP ([section 1.4](#) 7, [section 2.1](#) 9)  
SOAP over HTTPS ([section 1.4](#) 7, [section 2.1](#) 9)  
[SOAP 1.2 binding](#) 52  
[Sort method](#) 11  
[Sort2 method](#) 11  
[SortDirectionEnum type](#) 12

## T

[ToggleItem method](#) 11  
[Tracking changes](#) 53  
[transports](#) 9  
[TrustedUserHeader SOAP header](#) 13  
[type definitions](#) 12

## V

[ValidValue type](#) 12

## W

[Warning type](#) 12  
[WSDL XML Schema types](#) 9

## X

[XML namespaces](#) 10