

[MS-SSNWS]: Native Web Services Protocol Specification

Intellectual Property Rights Notice for Open Specifications Documentation

- **Technical Documentation.** Microsoft publishes Open Specifications documentation for protocols, file formats, languages, standards as well as overviews of the interaction among each of these technologies.
- **Copyrights.** This documentation is covered by Microsoft copyrights. Regardless of any other terms that are contained in the terms of use for the Microsoft website that hosts this documentation, you may make copies of it in order to develop implementations of the technologies described in the Open Specifications and may distribute portions of it in your implementations using these technologies or your documentation as necessary to properly document the implementation. You may also distribute in your implementation, with or without modification, any schema, IDL's, or code samples that are included in the documentation. This permission also applies to any documents that are referenced in the Open Specifications.
- **No Trade Secrets.** Microsoft does not claim any trade secret rights in this documentation.
- **Patents.** Microsoft has patents that may cover your implementations of the technologies described in the Open Specifications. Neither this notice nor Microsoft's delivery of the documentation grants any licenses under those or any other Microsoft patents. However, a given Open Specification may be covered by Microsoft's Open Specification Promise (available here: <http://www.microsoft.com/interop/osp>) or the Community Promise (available here: <http://www.microsoft.com/interop/cp/default.mspx>). If you would prefer a written license, or if the technologies described in the Open Specifications are not covered by the Open Specifications Promise or Community Promise, as applicable, patent licenses are available by contacting iplq@microsoft.com.
- **Trademarks.** The names of companies and products contained in this documentation may be covered by trademarks or similar intellectual property rights. This notice does not grant any licenses under those rights.

Reservation of Rights. All other rights are reserved, and this notice does not grant any rights other than specifically described above, whether by implication, estoppel, or otherwise.

Tools. The Open Specifications do not require the use of Microsoft programming tools or programming environments in order for you to develop an implementation. If you have access to Microsoft programming tools and environments you are free to take advantage of them. Certain Open Specifications are intended for use in conjunction with publicly available standard specifications and network programming art, and assumes that the reader either is familiar with the aforementioned material or has immediate access to it.

Preliminary Documentation. This Open Specification is preliminary documentation for this technology. Since the documentation may change between this preliminary version and the final version, there are risks in relying on preliminary documentation. To the extent that you incur additional development obligations or any other costs as a result of relying on this preliminary documentation, you do so at your own risk.

Revision Summary

Date	Revision History	Revision Class	Comments
08/07/2009	0.1	Major	First release.
11/06/2009	0.1.1	Editorial	Revised and edited the technical content.

Preliminary

Contents

1 Introduction	6
1.1 Glossary.....	6
1.2 References.....	7
1.2.1 Normative References	7
1.2.2 Informative References	8
1.3 Protocol Overview (Synopsis)	8
1.4 Relationship to Other Protocols.....	9
1.5 Prerequisites/Preconditions.....	10
1.6 Applicability Statement.....	11
1.7 Versioning and Capability Negotiation.....	11
1.8 Vendor-Extensible Fields	11
1.9 Standards Assignments	11
2 Messages	12
2.1 Transport.....	12
2.2 Common Message Syntax.....	12
2.2.1 Namespaces.....	12
2.2.2 Messages.....	13
2.2.2.1 sqlbatchSoapIn	13
2.2.2.1.1 sqlbatchSoapIn SOAP Body	13
2.2.2.1.2 sqlbatchSoapIn SOAP Headers.....	14
2.2.2.1.2.1 applicationName SOAP Header	18
2.2.2.1.2.2 clientInterface SOAP Header.....	18
2.2.2.1.2.3 clientNetworkID SOAP Header.....	18
2.2.2.1.2.4 clientPID SOAP Header.....	18
2.2.2.1.2.5 environmentChangeNotifications SOAP Header	18
2.2.2.1.2.6 hostName SOAP Header.....	19
2.2.2.1.2.7 initialDatabase SOAP Header.....	19
2.2.2.1.2.8 initialLanguage SOAP Header.....	20
2.2.2.1.2.9 notificationRequest SOAP Header.....	20
2.2.2.1.2.10 sqlSession SOAP Header.....	20
2.2.2.2 sqlbatchSoapOut.....	21
2.2.2.2.1 sqlbatchSoapOut SOAP Body	22
2.2.2.2.1.1 sqlbatchResult.....	22
2.2.2.2.1.1.1 sqlbatchResult.SqlRow Set	23
2.2.2.2.1.1.2 sqlbatchResult.SqlXml	24
2.2.2.2.1.1.3 sqlbatchResult.SqlMessage	24
2.2.2.2.1.1.4 sqlbatchResult.SqlRowCount.....	26
2.2.2.2.1.1.5 sqlbatchResult.SqlResultCode.....	26
2.2.2.2.1.1.6 sqlbatchResult.SqlTransaction	26
2.2.2.2.2 sqlbatchSoapOut SOAP Header.....	27
2.2.2.2.2.1 sqlSession SOAP Header.....	28
2.2.3 Elements.....	29
2.2.4 Complex Types.....	29
2.2.4.1 ArrayOfSqlParameter.....	29
2.2.4.1.1 SqlParameter.....	30
2.2.4.1.2 SqlParameter.Value.....	32
2.2.5 Simple Types	33
2.2.5.1 sqlCompareOptionsList.....	33
2.2.5.2 sqlTypes	34

2.2.5.3	sqlDbTypeEnum	38
2.2.6	Attributes.....	39
2.2.7	Groups.....	39
2.2.8	Attribute Groups	39
2.3	Directory Service Schema Elements.....	40
3	Protocol Details.....	41
3.1	Batch_EPSoap Server Details.....	41
3.1.1	Abstract Data Model.....	41
3.1.2	Timers	41
3.1.3	Initialization	41
3.1.4	Message Processing Events and Sequencing Rules	41
3.1.4.1	Single sqlbatch.....	42
3.1.4.1.1	Messages.....	42
3.1.4.1.1.1	sqlbatchSoapIn	42
3.1.4.1.1.2	sqlbatchSoapOut.....	42
3.1.4.1.2	Elements.....	42
3.1.4.1.2.1	sqlbatch.....	43
3.1.4.1.2.2	sqlbatchResponse.....	43
3.1.4.1.3	Complex Types.....	43
3.1.4.1.3.1	SqlResultStream	43
3.1.4.1.3.2	ArrayOfSqlParameter.....	43
3.1.4.1.4	Simple Types	43
3.1.4.1.4.1	ParameterDirection	43
3.1.4.1.5	Attributes.....	43
3.1.4.1.6	Groups.....	44
3.1.4.1.7	Attribute Groups	44
3.1.4.2	Session-based sqlbatch	44
3.1.4.2.1	Messages.....	45
3.1.4.2.1.1	sqlbatchSoapIn	45
3.1.4.2.1.2	sqlbatchSoapOut.....	45
3.1.4.2.2	Elements.....	45
3.1.4.2.2.1	sqlSession.....	45
3.1.4.2.2.2	sqlbatch.....	46
3.1.4.2.2.3	sqlbatchResponse.....	46
3.1.4.2.3	Complex Types.....	46
3.1.4.2.3.1	SqlResultStream	46
3.1.4.2.3.2	ArrayOfSqlParameter.....	46
3.1.4.2.4	Simple Types	46
3.1.4.2.4.1	ParameterDirection	46
3.1.4.2.5	Attributes.....	46
3.1.4.2.6	Groups.....	46
3.1.4.2.7	Attribute Groups	47
3.1.4.3	Authentication.....	47
3.1.5	Timer Events.....	47
3.1.6	Other Local Events	47
3.2	Client Details.....	47
3.2.1	Abstract Data Model.....	47
3.2.2	Timers	48
3.2.3	Initialization	48
3.2.4	Message Processing Events and Sequencing Rules	48
3.2.5	Timer Events.....	48
3.2.6	Other Local Events	48

4 Protocol Examples	49
4.1 SOAP Requests	49
4.1.1 SOAP Request with No Parameters	49
4.1.2 SOAP Request with SOAPAction Header	49
4.1.3 SOAP Request with Parameters	49
4.1.4 SOAP Request with Additional Parameter Attributes	50
4.1.5 SOAP Request with sqlSession.initiate	51
4.1.6 SOAP Request with sqlSession.sessionId	51
4.1.7 SOAP Request with sqlSession.terminate	52
4.2 SOAP Responses	52
4.2.1 SOAP Response with No Output Parameters	52
4.2.2 SOAP Response with Output Parameters	54
4.2.3 SOAP Response With Additional Output Parameter Attributes	56
4.2.4 SOAP Response to a Request with sqlSession.initiate	58
4.2.5 SOAP Response to a Request with sqlSession.sessionId	58
4.2.6 SOAP Response to a Request with sqlSession.terminate	60
4.2.7 SOAP Fault Response	62
5 Security	64
5.1 Security Considerations for Implementers	64
5.2 Index of Security Parameters	64
6 Appendix A: Full WSDL	65
7 Appendix B: Product Behavior	81
8 Change Tracking	83
9 Index	84

1 Introduction

This document specifies the Native Web Service Protocol Specification ([MS-SSNWS]), a specific Web services implementation that uses the standard Simple Object Access Protocol (SOAP). All references to the term SQL Server refer to the Microsoft® SQL Server® product line. The [MS-SSNWS] protocol is an application layer request/response protocol that facilitates interaction with a database server and provides for:

- Specification of requests to SQL Server.
- Returning of data.

1.1 Glossary

The following terms are defined in [\[MS-GLOS\]](#):

certificate
globally unique identifier (GUID)
SOAP action
SOAP body
SOAP fault
SOAP header
SOAP message
SOAP mustUnderstand attribute
UTF-16
UTF-8
Web Services Description Language (WSDL)
Web services
WSDL message
WSDL operation
WSDL port type
XML
XML namespace
XML schema

The following terms are specific to this document:

Basic: An authentication access type supported by HTTP as defined by [\[RFC2617\]](#).

Digest: An authentication access type supported by HTTP as defined by [\[RFC2617\]](#).

Kerberos: An authentication access type as defined by [\[RFC1964\]](#).

Negotiate: An authentication access type supported by HTTP as defined by [\[RFC4559\]](#).

NTLM: An authentication access type as defined by [\[NTLM\]](#).

MAY, SHOULD, MUST, SHOULD NOT, MUST NOT: These terms (in all caps) are used as described in [\[RFC2119\]](#). All statements of optional behavior use either MAY, SHOULD, or SHOULD NOT.

1.2 References

1.2.1 Normative References

We conduct frequent surveys of the normative references to assure their continued availability. If you have any issue with finding a normative reference, please contact dochelp@microsoft.com. We will assist you in finding the relevant information. Please check the archive site, <http://msdn2.microsoft.com/en-us/library/E4BD6494-06AD-4aed-9823-445E921C9624>, as an additional source.

[MS-GLOS] Microsoft Corporation, "[Windows Protocols Master Glossary](#)", March 2007.

[RFC2119] Bradner, S., "Key words for use in RFCs to Indicate Requirement Levels", BCP 14, RFC 2119, March 1997, <http://www.ietf.org/rfc/rfc2119.txt>

[RFC2616] Fielding, R., Gettys, J., Mogul, J., et al., "Hypertext Transfer Protocol -- HTTP/1.1", RFC 2616, June 1999, <http://www.ietf.org/rfc/rfc2616.txt>

[RFC2617] Franks, J., Hallam-Baker, P., Hostetler, J., Lawrence, S., Leach, P., Luotonen, A., and Stewart, L., "HTTP Authentication: Basic and Digest Access Authentication", RFC 2617, June 1999, <http://www.ietf.org/rfc/rfc2617.txt>

[RFC2818] Rescorla, E., "HTTP Over TLS", RFC 2818, May 2000, <http://www.ietf.org/rfc/rfc2818.txt>

[RFC4178] Zhu, L., Leach, P., Jaganathan, K., and Ingersoll, W., "The Simple and Protected Generic Security Service Application Program Interface (GSS-API) Negotiation Mechanism", RFC 4178, October 2005, <http://www.ietf.org/rfc/rfc4178.txt>

[RFC4559] Jaganathan, K., Zhu, L., and Brezak, J., "SPNEGO-based Kerberos and NTLM HTTP Authentication in Microsoft Windows", RFC 4559, June 2006, <http://www.ietf.org/rfc/rfc4559.txt>

[SOAP1.1] Box, D., Ehnebuske, D., Kakivaya, G., Layman, A., Mendelsohn, N., Nielsen, H. F., Thatte, S., and Winer, D., "Simple Object Access Protocol (SOAP) 1.1", May 2000, <http://www.w3.org/TR/2000/NOTE-SOAP-20000508/>

[SOAP1.2/1] Gudgin, M., Hadley, M., Mendelsohn, N., Moreau, J., and Nielsen, H.F., "[SOAP Version 1.2 Part 1: Messaging Framework](#)", W3C Recommendation, June 2003, <http://www.w3.org/TR/2003/REC-soap12-part1-20030624>.

[SOAP1.2/2] Gudgin, M., Hadley, M., Mendelsohn, N., Moreau, J., and Nielsen, H.F., "[SOAP Version 1.2 Part 2: Adjuncts](#)", W3C Recommendation, June 2003, <http://www.w3.org/TR/2003/REC-soap12-part2-20030624>.

[WSDL] Christensen, E., Curbera, F., Meredith, G., and Weerawarana, S., "Web Services Description Language (WSDL) 1.1", W3C Note, March 2001, <http://www.w3.org/TR/2001/NOTE-wsdl-20010315>

[WSSE-UsernameToken] Nadalin, A., et al., "[Web Services Security UsernameToken Profile 1.0](#)", March 2004, <http://docs.oasis-open.org/wss/2004/01/oasis-200401-wss-username-token-profile-1.0.pdf>.

[XML10] World Wide Web Consortium, "Extensible Markup Language (XML) 1.0 (Third Edition)", February 2004, <http://www.w3.org/TR/REC-xml>

[XMLNS] World Wide Web Consortium, "Namespaces in XML 1.0 (Second Edition)", August 2006, <http://www.w3.org/TR/REC-xml-names/>

[XMLSCHEMA1] Thompson, H.S., Ed., Beech, D., Ed., Maloney, M., Ed., and Mendelsohn, N., Ed., "XML Schema Part 1: Structures", W3C Recommendation, May 2001, <http://www.w3.org/TR/2001/REC-xmlschema-1-20010502/>

[XMLSCHEMA2] Biron, P.V., Ed. and Malhotra, A., Ed., "XML Schema Part 2: Datatypes", W3C Recommendation, May 2001, <http://www.w3.org/TR/2001/REC-xmlschema-2-20010502/>

1.2.2 Informative References

[MSDN-DEES] Microsoft Corporation, "Database Engine Error Severities", March 2009, <http://msdn.microsoft.com/en-us/library/ms164086.aspx>

[MSDN-SQLCollation] Microsoft Corporation, "Selecting a SQL Collation", <http://msdn.microsoft.com/en-us/library/ms144250.aspx>

[MSDN-TSQL] Microsoft Corporation, "Transact-SQL Overview", [http://msdn.microsoft.com/en-us/library/aa260642\(SQL.80\).aspx](http://msdn.microsoft.com/en-us/library/aa260642(SQL.80).aspx)

[MSDN-XMLSNET] Microsoft Corporation, Watson, B., "XML Serialization in the .NET Framework", <http://msdn.microsoft.com/en-us/library/ms950721.aspx>

[NTLM] Microsoft Corporation, "Microsoft NTLM", <http://msdn.microsoft.com/en-us/library/aa378749.aspx>

If you have any trouble finding [NTLM], please check [here](#).

[RFC1964] Linn, J., "The Kerberos Version 5 GSS-API Mechanism", RFC 1964, June 1996, <http://www.ietf.org/rfc/rfc1964.txt>

[RFC2781] Hoffman, P., and Yergeau, F., "UTF-16, an encoding of ISO 10646", RFC 2781, February 2000, <http://www.ietf.org/rfc/rfc2781.txt>

[RFC3629] Yergeau, F., "UTF-8, A Transformation Format of ISO 10646", STD 63, RFC 3629, November 2003, <http://www.ietf.org/rfc/rfc3629.txt>

1.3 Protocol Overview (Synopsis)

The Native Web Services Protocol Specification [MS-SSNWS] is an application-level protocol used for the transfer of requests and responses between clients and database server systems. In such systems, the client will typically establish a connection with the server. Once the connection is established using the HTTP ([RFC2616]) or HTTPS ([RFC2818]) protocol, SOAP messages, SOAP1.1 ([SOAP1.1]) or SOAP1.2 ([SOAP1.2/1], [SOAP1.2/2]), are used to communicate between the client and the server.

The [MS-SSNWS] protocol uses the security facilities built into HTTP or HTTPS for authentication and identification, and channel encryption negotiation. The protocol uses the facilities built into SOAP for specification of requests from client to server and for returning data from server to client. The following diagram depicts a (simplified) typical flow of communication in the protocol.

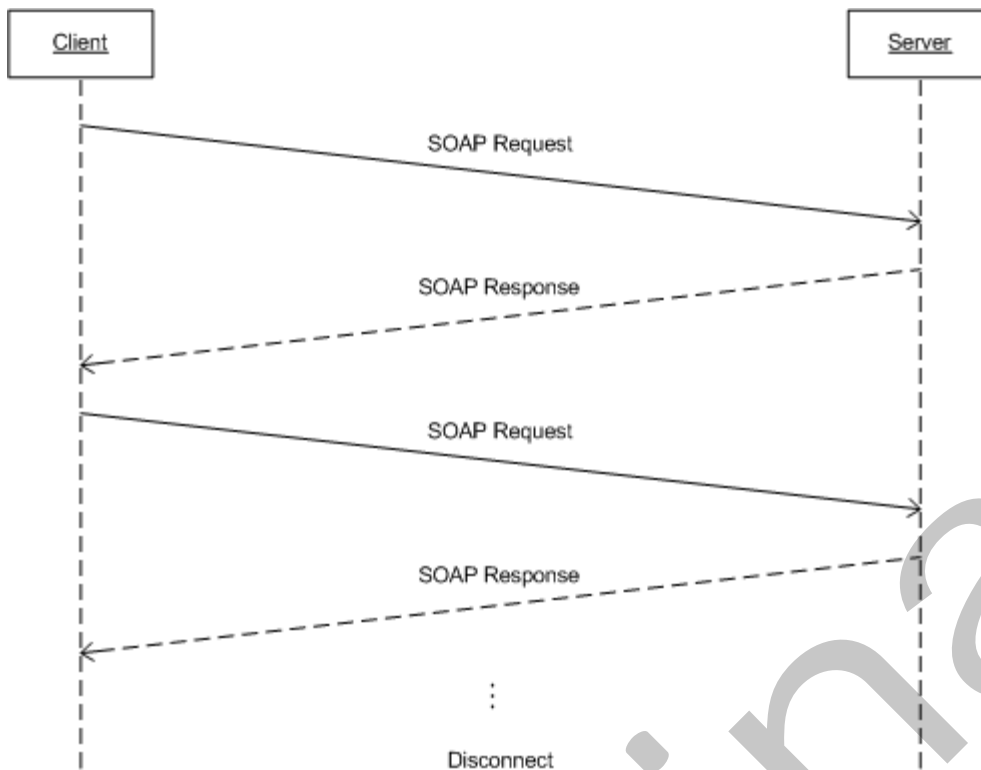


Figure 1: Communication flow in the Native Web Services protocol

The following example is a high-level description of the messages exchanged between the client and the server to execute a simple client request such as the execution of an [\[MSDN-TSQL\]](#) statement. It is assumed that the client and the server have already established a connection and authentication has succeeded.

Client:SQL statement

The server executes the statement and then sends back the results to the client.

1.4 Relationship to Other Protocols

The [MS-SSNWS] protocol uses SOAP over HTTP as shown in the following layering diagram.

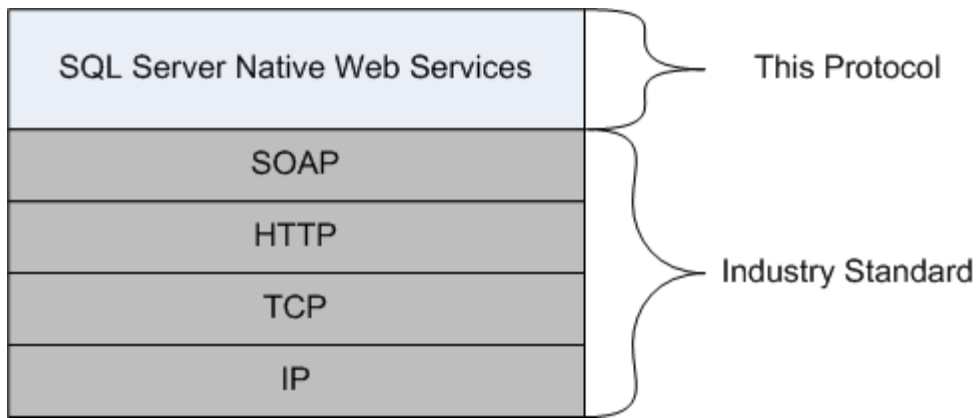


Figure 2: SOAP over HTTP

The protocol depends on the underlying network stacks being established prior to communications with [MS-SSNWS].

The [MS-SSNWS] protocol uses SOAP over HTTPS for network encryption as shown in the following layering diagram.

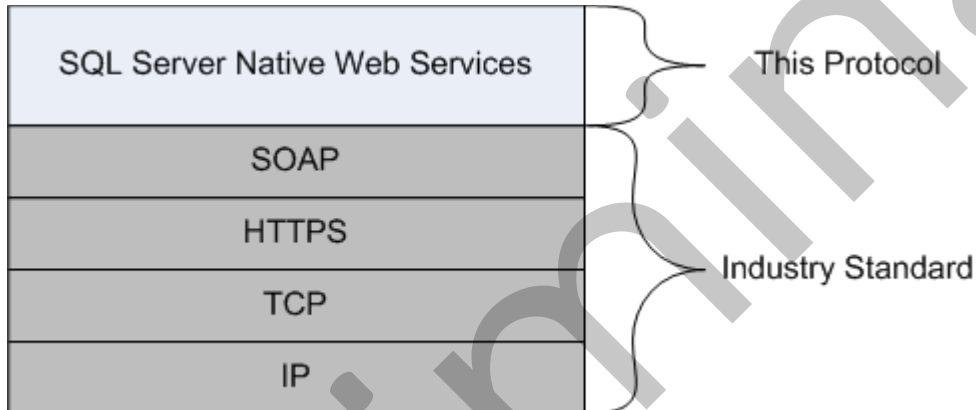


Figure 3: SOAP over HTTPS

1.5 Prerequisites/Preconditions

It is assumed that the client has already discovered the server and established a network transport connection for use with [MS-SSNWS].

No security association is assumed to have been established at the lower layer before [MS-SSNWS] begins functioning. For [RFC4178](#) or [RFC2617](#) authentication to be used, [RFC4178] or [RFC2617] support must be available on both the client and server machines. If channel encryption is to be used, then [RFC2818](#) support must be present on both the client and server machines, and a [certificate](#) suitable for encryption must be deployed on the server machine.

1.6 Applicability Statement

The [MS-SSNWS] protocol is appropriate for use to facilitate request/response communications between an application and a database server in [Web services](#) application scenarios where network or local connectivity is available.

1.7 Versioning and Capability Negotiation

This document covers versioning issues in the following areas:

- **Supported Transports:** This protocol uses multiple transports with SOAP as specified in section [2.1](#).
- **Protocol Versions:** This protocol has only one version and has only one [WSDL port type](#) version with a single operation. The use of the operation is specified in section [3.1](#).
- **Security and Authentication Methods:** This protocol supports the following authentication methods: [Negotiate](#), NTLM, Kerberos, Digest, and Basic.
- **Localization:** This protocol includes text strings in various messages. This protocol uses [UTF-8](#) and [UTF-16](#) encoded strings.
- **Capability Negotiation:** This protocol does not support negotiation of the interface version to use. Instead, an implementation must be configured with the interface version to use, as described in the following paragraph.

The [MS-SSNWS] protocol does not provide facilities for capability negotiation; it is fixed. Depending on the configuration of the server, the client can request which authentication type to use; whether to use SOAP1.1 or SOAP1.2; and whether to use HTTP or HTTPS. Ultimately, the server decides whether the SOAP message sent by the client meets the server requirements.

1.8 Vendor-Extensible Fields

None.

1.9 Standards Assignments

Parameter	Value	Reference
None		

2 Messages

2.1 Transport

The [MS-SSNWS] protocol supports both SOAP v1.1 and SOAP v1.2 requests. The corresponding response MUST be sent in the same SOAP version as the request. As mentioned in section 1.4, the communication is only supported over the HTTP/HTTPS protocol, specifically HTTP v1.1. If a request is sent using HTTP v1.0, the server MUST reject the request and return an *HTTP 505 Version not supported* error.

2.2 Common Message Syntax

This section contains common definitions used by this protocol. The syntax of the definitions uses the [XML schema](#) as defined in [\[XMLSCHEMA1\]](#) and [\[XMLSCHEMA2\]](#), and [Web Services Description Language \(WSDL\)](#) as defined in [\[WSDL\]](#).

This protocol follows the standard [XML](#) data usage as specified by [\[SOAP1.1\]](#), [\[SOAP1.2/1\]](#), [\[SOAP1.2/2\]](#), and [\[XML10\]](#). Following the rules specified by these standards, certain elements allow for the existence of unknown attributes. These unknown attributes are ignored unless otherwise explicitly specified within this document.

2.2.1 Namespaces

This specification defines and references various [XML namespaces](#) using the mechanisms specified in [\[XMLNS\]](#). Although this specification associates a specific XML namespace prefix to each XML namespace that is used, the choice of any particular XML namespace prefix is implementation specific and not significant for interoperability.

Prefix	Namespace URI	Reference
sql	"http://schemas.microsoft.com/sqlserver/2004/SOAP"	None
sqlsoaptypes	"http://schemas.microsoft.com/sqlserver/2004/SOAP/types"	None
sqlrowcount	"http://schemas.microsoft.com/sqlserver/2004/SOAP/types/SqlRowCount"	None
sqlmessage	"http://schemas.microsoft.com/sqlserver/2004/SOAP/types/SqlMessage"	None
sqloptions	"http://schemas.microsoft.com/sqlserver/2004/SOAP/Options"	None
sqlparameter	"http://schemas.microsoft.com/sqlserver/2004/SOAP/types/SqlParameter"	None
sqlresultstream	"http://schemas.microsoft.com/sqlserver/2004/SOAP/types/SqlResultStream"	None
sqltransaction	"http://schemas.microsoft.com/sqlserver/2004/SOAP/types/SqlTransaction"	None
sqltypes	"http://schemas.microsoft.com/sqlserver/2004/sqltypes"	None

2.2.2 Messages

Message	Description
sqlbatchSoapIn	This WSDL message defines the request portion of the SQL Server built-in optional WSDL operation .
sqlbatchSoapOut	This WSDL message defines the response portion of the SQL Server built-in optional WSDL operation.

2.2.2.1 sqlbatchSoapIn

This WSDL message is a SOAP request from the client to the server. It has an optional [SOAP action](#) value of "http://schemas.microsoft.com/sqlserver/2004/SOAPsqlbatch". The following set of XML namespaces is used throughout the subsections under this section:

```
xmlns:xsd="http://www.w3.org/2001/XMLSchema"
```

```
xmlns:sqlparameter=
```

```
"http://schemas.microsoft.com/sqlserver/2004/SOAP/types/SqlParameter"
```

In addition to the required [SOAP body](#), the sqlbatchSoapIn message also supports optional [SOAP headers](#). The set of optional SOAP headers allowed includes the [\[WSSE-UseNameToken\]](#) and the set of SOAP headers defined in the "http://schemas.microsoft.com/sqlserver/2004/SOAP/Options" namespace. The SOAP headers are described in section [2.2.2.1.2](#).

2.2.2.1.1 sqlbatchSoapIn SOAP Body

The following describes the element within the SOAP request body under the "http://schemas.microsoft.com/sqlserver/2004/SOAP" namespace.

```
<xsd:element name="sqlbatch">
  <xsd:complexType>
    <xsd:sequence>
      <xsd:element minOccurs="1" maxOccurs="1"
name="BatchCommands" type="xsd:string" />
      <xsd:element minOccurs="0" maxOccurs="1"
name="Parameters"
type="sqlparameter:ArrayOfSqlParameter"
nillable="true" />
    </xsd:sequence>
  </xsd:complexType>
</xsd:element>
```

sqlbatch.BatchCommands: This required element holds the string that makes up the Transact-SQL query to be executed by SQL Server. This element **MUST** exist in the request. Please refer to [\[MSDN-TSQL\]](#) for reference on Transact-SQL syntax.

sqlbatch.Parameters: This optional element is a complex type that defines the list of parameters associated with the query syntax specified by the **BatchCommands** element. The client application **MAY** send this element as part of the request. The details of this element are defined by the **ArrayOfSqlParameter** complex type, which is described in section [2.2.4.1](#).

2.2.2.1.2 sqlbatchSoapIn SOAP Headers

The sqlbatchSoapIn SOAP headers are defined by the "http://schemas.microsoft.com/sqlserver/2004/SOAP/Options" namespace.

```
<xsd:element name="applicationName">
  <xsd:annotation>
    <xsd:documentation>Set the application name for the
login.</xsd:documentation>
  </xsd:annotation>
  <xsd:complexType>
    <xsd:attribute name="value" type="xsd:string"
form="unqualified" use="required">
      <xsd:annotation>
        <xsd:documentation>The application name
to set for the login.</xsd:documentation>
      </xsd:annotation>
    </xsd:attribute>
  </xsd:complexType>
</xsd:element>
<xsd:element name="clientInterface">
  <xsd:annotation>
    <xsd:documentation>Set the client interface
for the login.</xsd:documentation>
  </xsd:annotation>
  <xsd:complexType>
    <xsd:attribute name="value" type="xsd:string"
form="unqualified" use="required">
      <xsd:annotation>
        <xsd:documentation>The client interface
to set for the login.</xsd:documentation>
      </xsd:annotation>
    </xsd:attribute>
  </xsd:complexType>
</xsd:element>
<xsd:element name="clientNetworkID">
  <xsd:annotation>
    <xsd:documentation>Set the client network ID
for the login.</xsd:documentation>
  </xsd:annotation>
  <xsd:complexType>
    <xsd:attribute name="value" type="xsd:base64Binary"
form="unqualified" use="required">
      <xsd:annotation>
        <xsd:documentation>The client network ID to
set for the login.</xsd:documentation>
      </xsd:annotation>
    </xsd:attribute>
  </xsd:complexType>
</xsd:element>
<xsd:element name="clientPID">
  <xsd:annotation>
    <xsd:documentation>Set the client process ID
for the login.</xsd:documentation>
  </xsd:annotation>
  <xsd:complexType>
    <xsd:attribute name="value" type="xsd:long"
form="unqualified" use="required">
      <xsd:annotation>
```

```

        <xsd:documentation>The client process ID to
set for the login.</xsd:documentation>
    </xsd:annotation>
</xsd:attribute>
</xsd:complexType>
</xsd:element>
<xsd:element name="environmentChangeNotifications">
    <xsd:annotation>
        <xsd:documentation>Receive environment change notifications.</xsd:documentation>
    </xsd:annotation>
    <xsd:complexType>
        <xsd:attribute name="databaseChange"
default="false" type="xsd:boolean" form="unqualified">
            <xsd:annotation>
                <xsd:documentation>Receive notifications of database
changes.</xsd:documentation>
            </xsd:annotation>
        </xsd:attribute>
        <xsd:attribute name="languageChange" default="false"
type="xsd:boolean" form="unqualified">
            <xsd:annotation>
                <xsd:documentation>Receive notifications of
language changes.</xsd:documentation>
            </xsd:annotation>
        </xsd:attribute>
        <xsd:attribute name="transactionBoundary" default="false" type="xsd:boolean"
form="unqualified">
            <xsd:annotation>
                <xsd:documentation>Receive notifications of transaction
boundaries.</xsd:documentation>
            </xsd:annotation>
        </xsd:attribute>
    </xsd:complexType>
</xsd:element>
<xsd:element name="hostName">
    <xsd:annotation>
        <xsd:documentation>Set the host name for the
login.</xsd:documentation>
    </xsd:annotation>
    <xsd:complexType>
        <xsd:attribute name="value" type="xsd:string"
form="unqualified" use="required">
            <xsd:annotation>
                <xsd:documentation>The host name to set for the
login.</xsd:documentation>
            </xsd:annotation>
        </xsd:attribute>
    </xsd:complexType>
</xsd:element>
<xsd:element name="initialDatabase">
    <xsd:annotation>
        <xsd:documentation>Set initial database on
login.</xsd:documentation>
    </xsd:annotation>
    <xsd:complexType>
        <xsd:attribute name="value" type="xsd:string"
form="unqualified" use="required">
            <xsd:annotation>
                <xsd:documentation>The name of the initial

```

```

database to attach to.</xsd:documentation>
  </xsd:annotation>
</xsd:attribute>
  <xsd:attribute name="optional" default="false"
type="xsd:boolean" form="unqualified">
  <xsd:annotation>
    <xsd:documentation>Whether the initial database
is optional or not.</xsd:documentation>
  </xsd:annotation>
</xsd:attribute>
  <xsd:attribute name="filename" type="xsd:string"
form="unqualified">
  <xsd:annotation>
    <xsd:documentation>The filename of the database
to attach to.</xsd:documentation>
  </xsd:annotation>
</xsd:attribute>
</xsd:complexType>
</xsd:element>
<xsd:element name="initialLanguage">
  <xsd:annotation>
    <xsd:documentation>Set initial language
to set.</xsd:documentation>
  </xsd:annotation>
  <xsd:complexType>
    <xsd:attribute name="value" type="xsd:string"
form="unqualified" use="required">
    <xsd:annotation>
      <xsd:documentation>The name of the initial
language to set.</xsd:documentation>
    </xsd:annotation>
  </xsd:attribute>
  <xsd:attribute name="optional" default="false"
type="xsd:boolean" form="unqualified">
  <xsd:annotation>
    <xsd:documentation>Whether the initial language
is optional or not.</xsd:documentation>
  </xsd:annotation>
</xsd:attribute>
</xsd:complexType>
</xsd:element>
<xsd:element name="notificationRequest">
  <xsd:annotation>
    <xsd:documentation>Requests query notifications
for the request.</xsd:documentation>
  </xsd:annotation>
  <xsd:complexType>
    <xsd:attribute name="notificationId" type="xsd:string"
form="unqualified" use="required">
    <xsd:annotation>
      <xsd:documentation>The notification
identifier.</xsd:documentation>
    </xsd:annotation>
  </xsd:attribute>
  <xsd:attribute name="deliveryService" type="xsd:string"
form="unqualified" use="required">
  <xsd:annotation>
    <xsd:documentation>The delivery
service.</xsd:documentation>

```



```

        </xsd:annotation>
      </xsd:attribute>
      <xsd:attribute name="timeout" type="xsd:integer"
form="unqualified">
        <xsd:annotation>
          <xsd:documentation>The timeout
value.</xsd:documentation>
        </xsd:annotation>
      </xsd:attribute>
    </xsd:complexType>
  </xsd:element>
  <xsd:element name="sqlSession">
    <xsd:annotation>
      <xsd:documentation>SQL Server SOAP
Session</xsd:documentation>
    </xsd:annotation>
    <xsd:complexType>
      <xsd:attribute name="initiate" default="false"
type="xsd:boolean" form="unqualified">
        <xsd:annotation>
          <xsd:documentation>Set to 'true' to request
to start a new session.</xsd:documentation>
        </xsd:annotation>
      </xsd:attribute>
      <xsd:attribute name="terminate" default="false"
type="xsd:boolean" form="unqualified">
        <xsd:annotation>
          <xsd:documentation>Set to 'true' to request to
terminate an existing session.</xsd:documentation>
        </xsd:annotation>
      </xsd:attribute>
      <xsd:attribute name="sessionId" type="xsd:base64Binary"
form="unqualified">
        <xsd:annotation>
          <xsd:documentation>The ID of a
session.</xsd:documentation>
        </xsd:annotation>
      </xsd:attribute>
      <xsd:attribute name="timeout" type="xsd:int"
form="unqualified">
        <xsd:annotation>
          <xsd:documentation>The timeout in seconds before
the session expires.</xsd:documentation>
        </xsd:annotation>
      </xsd:attribute>
      <xsd:attribute name="transactionDescriptor"
type="xsd:base64Binary" form="unqualified">
        <xsd:annotation>
          <xsd:documentation>The descriptor of a transaction
to enlist to.</xsd:documentation>
        </xsd:annotation>
      </xsd:attribute>
    </xsd:complexType>
  </xsd:element>

```

Each of the SOAP header elements support the standard [SOAP mustUnderstand attribute](#) and the **actor** attribute. If the request is created by using the SOAP 1.2 format, then each of the SOAP

header elements also supports the standard SOAP **relay** attribute. The details of each SOAP header are described in their corresponding subsection, [2.2.2.1.2.1](#) through [2.2.2.1.2.10](#).

2.2.2.1.2.1 applicationName SOAP Header

applicationName: This optional element permits the client application to specify the name of the client connecting to the server. Specifying a value helps to identify which connection is established by which client application when troubleshooting the server. The value is specified by using the required value attribute.

applicationName.value: This required attribute of string type specifies the name of the client application that is connecting to the server.

2.2.2.1.2.2 clientInterface SOAP Header

clientInterface: This optional element permits the client application to specify the name of the API used by the client application. Specifying a value helps to identify the scenario when troubleshooting the server. The value is specified by using the required value attribute.

clientInterface.value: This required attribute of string type specifies the name of the API the client application is using.

2.2.2.1.2.3 clientNetworkID SOAP Header

clientNetworkID: This optional element permits the client application to specify the identification number of the network card the client application used to connect to the server. Specifying a value helps to identify the scenario when troubleshooting the server. The value is specified by using the required value attribute.

clientNetworkID.value: This required attribute of XML base64 binary type specifies the identification number.

2.2.2.1.2.4 clientPID SOAP Header

clientPID: This optional element permits the client application to specify the process identification number of the client application. Specifying a value helps to troubleshoot the exact client application that is having problems. The value is specified by using the required value attribute.

clientPID.value: This required attribute of XML long type specifies the identification number of the client application process.

2.2.2.1.2.5 environmentChangeNotifications SOAP Header

environmentChangeNotifications: This optional element permits the client application, by using the optional attributes associated with this element, to specify the set of database session environment change notifications the client application requests to receive.

environmentChangeNotifications.databaseChange: This optional attribute of XML Boolean type specifies whether the client application requests to receive notification for database usage changes within the current database session. This attribute has a default value of false. The allowed values are listed in the following table.

Value	Meaning
true	The server MUST send a notification to the client if, in the current database session, the database

Value	Meaning
	context has changed.
false	The server MUST NOT send a notification to the client if, in the current database session, the database context has changed.

environmentChangeNotifications.languageChange: This optional attribute of XML Boolean type specifies whether the client application requests to receive notification for language setting changes within the current database session. This attribute has a default value of false. The allowed values are listed in the following table.

Value	Meaning
true	The server MUST send a notification to the client if, in the current database session, the language environment has changed.
false	The server MUST NOT send a notification to the client if, in the current database session, the language environment has changed.

environmentChangeNotifications.transactionBoundary: This optional attribute of XML Boolean type specifies whether the client applications want to receive notification for transaction changes within the current database session. This attribute has a default value of false. The allowed values are listed in the following table.

Value	Meaning
true	The server MUST send a notification to the client if, in the current database session, the transaction context has changed.
false	The server MUST NOT send a notification to the client if, in the current database session, the transaction context has changed.

2.2.2.1.2.6 hostName SOAP Header

hostName: This optional element permits the client application to specify the host name of the client machine. Specifying a value helps to troubleshoot the exact client application that is having problems. The value is specified by using the required value attribute.

hostName.value: This required attribute of string type specifies the value of the client host name.

2.2.2.1.2.7 initialDatabase SOAP Header

initialDatabase: This optional element provides the ability for the client application to specify the name of the database to initially log in to. The value is specified by using the required value attribute.

initialDatabase.value: This required attribute of string type specifies the name of the database to initially log in to.

initialDatabase.optional: This optional attribute of Boolean type describes whether or not the specified initial database MUST exist and whether the client application user account can successfully log in to that database. This attribute has a default value of false. The allowed values are listed in the following table.

Value	Meaning
true	The database specified by the value attribute MUST exist or the database file specified by the filename attribute MUST successfully attach and the user MUST successfully log in to the specified database. If any of the above fails, then the server MUST return an error and terminate the connection.
false	The database specified by the value attribute SHOULD be used to attempt the login. If the database specified does not exist or the user does not have login permissions for the specified database, then the user's default login database can be used to attempt the login.

initialDatabase.filename: This optional attribute of string type describes the file path and file name of the database to attach as part of the login.

2.2.2.1.2.8 initialLanguage SOAP Header

initialLanguage: This optional element describes the name of the language to set the login to. The value is specified by using the required value attribute.

initialLanguage.value: This required attribute of string type describes the name of the language to set as part of login.

initialLanguage.optional: This optional attribute of Boolean type describes whether or not the specified initial language **MUST** succeed. This attribute has a default value of false. The allowed values are listed in the following table.

Value	Meaning
true	The language specified by the value attribute MUST exist. If the specified language cannot be set, then the server MUST return an error and terminate the connection.
false	The language specified by the value attribute SHOULD be used to set the language setting of the connection. If the server cannot be set to the language specified by the initialLanguage.value attribute, then the server will use the default login language of the user.

2.2.2.1.2.9 notificationRequest SOAP Header

notificationRequest: This optional element provides the ability for the client application to specify the notification service the server **MUST** use to send query notifications to the client. The ID and service name are specified by using the required **notificationId** and **deliveryService** attributes.

notificationRequest.notificationId: This required attribute of string type specifies the ID associated with the notification request.

notificationRequest.deliveryService: This required attribute of string type specifies the name of the Service Broker service that is listening for query notifications.

notificationRequest.timeout: This optional attribute of XML integer type describes the length of time in seconds.

2.2.2.1.2.10 sqlSession SOAP Header

sqlSession: This optional element provides the ability for the client to control a named query session. The mechanism to control a named query session is through the use of the following associated optional attributes.

sqlSession.initiate: This optional attribute of Boolean type describes whether or not the server SHOULD create a new session. This attribute has a default value of false. The allowed values are listed in the following table.

Value	Meaning
true	The server SHOULD create a new session before executing the query statement in the request.
false	The server MUST NOT create a new named session.

sqlSession.terminate: This optional attribute of Boolean type describes whether or not the server SHOULD terminate the session specified by the **sessionId** attribute. This attribute has a default value of false. The allowed values are listed in the following table.

Value	Meaning
true	The server SHOULD terminate the session specified by the sessionId attribute at the end of executing the query statement in the request.
false	The server MUST NOT terminate the session specified by the sessionId attribute.

sqlSession.sessionId: This optional attribute of XML base64 binary type specifies the session token. This token is first generated by the server when a new session is created. The client MAY use the same session token returned by the server to join a created session to continue executing queries in the same session.

sqlSession.timeout: This optional attribute of XML int type specifies the duration, in seconds, of inactivity in the session before the server SHOULD terminate the session.

sqlSession.transactionDescriptor: This optional attribute of XML base64 binary type specifies the transaction token. This token is first returned by the server in the **sqlbatchResponse.sqlbatchResult.SqlTransaction** element of the sqlbatchSoapOut message that is described in section [2.2.2.2.1.1.6](#). The client MAY use the same transaction token returned by the server to join the existing transaction to execute the query statement in the request.

2.2.2.2 sqlbatchSoapOut

This WSDL message is a server response. The following set of XML namespaces is used throughout the subsections under this section:

```

xmlns:xsd="http://www.w3.org/2001/XMLSchema"
xmlns:sqlresultstream=
"http://schemas.microsoft.com/sqlserver/2004/SOAP/types/SqlResultStream"
xmlns:sqlparameter=
"http://schemas.microsoft.com/sqlserver/2004/SOAP/types/SqlParameter"
xmlns:sqlsoaptypes="http://schemas.microsoft.com/sqlserver/2004/SOAP/types"
xmlns:sqlmessage=
"http://schemas.microsoft.com/sqlserver/2004/SOAP/types/SqlMessage"
xmlns:sqlrowcount=

```

"http://schemas.microsoft.com/sqlserver/2004/SOAP/types/SqlRowCount"

xmlns:sqltransaction=

"http://schemas.microsoft.com/sqlserver/2004/SOAP/types/SqlTransaction"

2.2.2.2.1 sqlbatchSoapOut SOAP Body

The following describes the element within the SOAP response body under the "http://schemas.microsoft.com/sqlserver/2004/SOAP" namespace.

```
<xsd:element name="sqlbatchResponse">
  <xsd:complexType>
    <xsd:sequence>
      <xsd:element minOccurs="1" maxOccurs="1"
name="sqlbatchResult" type="sqlresultstream:SqlResultStream"
nillable="false"/>
      <xsd:element minOccurs="0" maxOccurs="1"
name="Parameters" type="sqlparameter:ArrayOfSqlParameter"
nillable="true"/>
    </xsd:sequence>
  </xsd:complexType>
</xsd:element>
```

sqlbatchResponse.sqlbatchResult: This required element of complex type **SqlResultStream** defines the set of possible XML structures that MAY be part of the server response to a sqlbatch request. The details of this complex type are defined in section [2.2.2.2.1.1](#).

sqlbatchResponse.Parameters: This optional element is a complex type that defines the list of output parameters associated with the result of the original sqlbatch request. If there are any corresponding output parameters as a result of the sqlbatch request, the server MUST send this element as part of the response. The details of this element are defined in section [2.2.4.1](#).

2.2.2.2.1.1 sqlbatchResult

Referenced by the **sqlbatchResult** element, the **SqlResultStream** type is defined under the "http://schemas.microsoft.com/sqlserver/2004/SOAP/types/SqlResultStream" namespace as the following.

```
<xsd:complexType name="SqlResultStream">
  <xsd:choice minOccurs="1" maxOccurs="unbounded">
    <xsd:element name="SqlRowSet" type="sqlsoaptypes:SqlRowSet" />
    <xsd:element name="SqlXml" type="sqlsoaptypes:SqlXml" />
    <xsd:element name="SqlMessage" type="sqlmessage:SqlMessage" />
    <xsd:element name="SqlRowCount"
type="sqlrowcount:SqlRowCount" />
    <xsd:element name="SqlResultCode"
type="sqlsoaptypes:SqlResultCode" />
    <xsd:element name="SqlTransaction"
type="sqltransaction:SqlTransaction" />
  </xsd:choice>
</xsd:complexType>
```

Each of the subtypes that make up the **SqlResultStream** type is described in a corresponding subsection, [2.2.2.2.1.1.1](#) through [2.2.2.2.1.1.6](#).

2.2.2.2.1.1.1 sqlbatchResult.SqlRowSet

sqlbatchResponse.sqlbatchResult.SqlRowSet: This element of complex type **SqlRowSet** describes the portion of the response representing a resultset. The **SqlRowSet** type is defined under the "http://schemas.microsoft.com/sqlserver/2004/SOAP/types" namespace as the following.

```
<xsd:complexType name="SqlRowSet">
  <xsd:sequence maxOccurs="unbounded">
    <xsd:element ref="xsd:schema"/>
    <xsd:any/>
  </xsd:sequence>
</xsd:complexType>
```

This complex type MUST conform to the following rules.

- The complex type MUST have two main components:
 - The first component defined by `<xsd:element ref="xsd:schema"/>`, hereafter referred to as Schema, MAY be optionally specified by the server. When specified, it MUST be one or more XML schema elements as defined by [\[XMLSCHEMA1\]](#) and [\[XMLSCHEMA2\]](#), and it MUST contain a valid XML schema.
 - The second component defined by `<xsd:any/>`, hereafter referred to as DiffGram, MUST be an element named "diffgram" in the following namespace:

"urn:schemas-microsoft-com:xml-diffgram-v1"

The paragraphs that follow define the Schema component and the DiffGram component in more detail. At a basic level, the purpose of these components can be explained as follows:

- The Schema component defines the XML schema for the data representation in the DiffGram component's content. The XML representation of the data in the DiffGram component's content MUST conform to the XML schema defined in the Schema component.
- The DiffGram component encapsulates the values of the data in the resultset.

An example is shown in section [4.2.2](#).

When specifying the XML schema, the server MAY optionally define custom simple or complex types in arbitrary target namespaces and reference them in a subsequent target namespace. The server MAY also redefine existing simple or complex types in existing target namespaces, such as "http://schemas.microsoft.com/sqlserver/2004/sqltypes". If the server does redefine the "http://schemas.microsoft.com/sqlserver/2004/sqltypes" namespace, then each type specified MUST have the same XML schema as defined in the original namespace. Whether or not the server specifies custom simple or complex types in one or more namespaces, the server MUST specify a schema in a namespace that defines the element structure of the DiffGram component, hereafter referred to as DataInstance schema.

The DataInstance schema MUST define exactly one element that will encapsulate the representation of all data in the DiffGram component. This element is referred to as the **RowSet** element. In addition to being a valid XML schema, the DataInstance schema MUST conform to the following rules:

- The **RowSet** element MUST be defined using an anonymous complex type. The complex type MUST be defined to have one child element named **row** with zero minimum occurrence and unbounded maximum occurrence.
- The **http://www.w3.org/2001/XMLSchema:element** that defines the **RowSet** element MUST have the **urn:schemas-microsoft-com:xml-msdata:IsDataSet** attribute set to true.
- The **http://www.w3.org/2001/XMLSchema:element** that defines the **RowSet** element MUST have the **urn:schemas-microsoft-com:xml-msdata:DataSetName** attribute.
- The **http://www.w3.org/2001/XMLSchema:element** that defines the **RowSet** element MUST have the **urn:schemas-microsoft-com:xml-msdata:DataSetNamespace** attribute.
- The **row** element MUST be defined by using an anonymous complex type. The complex type MUST be defined as a sequence of child elements. The sequence MUST match the order of the columns of the resultset. Each child element MAY be specified with zero minimum occurrence. The names of the child elements are the same as the names of the columns of the resultset. When the resultset columns do not have a name, the names of the elements starts at "column1" and the suffix number is incremented for each additional unnamed column.
- Each child element within the row element SHOULD be defined in terms of a type defined in the "http://schemas.microsoft.com/sqlserver/2004/sqltypes" namespace. See section [2.2.5.2](#) for information about the mapping between SQL Server data types and corresponding XML data types. The XML schema MAY also specify additional properties or restrictions on the simple or complex type definition.

As mentioned in the preceding paragraphs, whether or not the Schema component is specified, the DiffGram component MUST be specified. The DiffGram component MUST have a root element of "<diffgr:diffgram xmlns:diffgr='urn:schemas-microsoft-com:xml-diffgram-v1'>". If the Schema component is specified, the subelements of the root MUST match the sequence of elements as defined by the Schema component. If the Schema component is not specified, the server will specify the same DiffGram component as if the Schema component had been specified.

2.2.2.2.1.1.2 sqlbatchResult.SqlXml

sqlbatchResponse.sqlbatchResult.SqlXml: This element of complex type **SqlXml** describes the portion of the response representing a resultset from a Select for XML query.

```
<xsd:complexType name="SqlXml" mixed="true">
  <xsd:sequence>
    <xsd:any processContents="skip" />
  </xsd:sequence>
</xsd:complexType>
```

This complex type describes data that SHOULD be treated as arbitrary XML data.

2.2.2.2.1.1.3 sqlbatchResult.SqlMessage

sqlbatchResponse.sqlbatchResult.SqlMessage: This element of complex type **SqlMessage** describes the portion of the response representing a SQL Server message. This includes server-generated error messages and user-defined messages. The **SqlMessage** type is defined under the "http://schemas.microsoft.com/sqlserver/2004/SOAP/types/SqlMessage" namespace as the following.


```

<xsd:complexType name="SqlMessage">
  <xsd:sequence minOccurs="1" maxOccurs="1">
    <xsd:element name="Class"
type="sqlmessage:nonNegativeInteger" />
    <xsd:element name="LineNumber"
type="sqlmessage:nonNegativeInteger" />
    <xsd:element name="Message" type="xsd:string" />
    <xsd:element name="Number"
type="sqlmessage:nonNegativeInteger" />
    <xsd:element name="Procedure"
type="xsd:string" minOccurs="0" />
    <xsd:element name="Server"
type="xsd:string" minOccurs="0" />
    <xsd:element name="Source" type="xsd:string" />
    <xsd:element name="State"
type="sqlmessage:nonNegativeInteger" />
  </xsd:sequence>
</xsd:complexType>

<xsd:simpleType name="nonNegativeInteger">
  <xsd:restriction base="xsd:int">
    <xsd:minInclusive value="0" />
  </xsd:restriction>
</xsd:simpleType>

```

SqlMessage.Class: This required element of simple type **nonNegativeInteger** describes the severity level of the server message. The range of values is defined by the server and subject to change, but it MUST be of type XML int. Refer to [\[MSDN-DEES\]](#) for details on the range of values defined by the server.

SqlMessage.LineNumber: This required element of simple type **nonNegativeInteger** describes the line number in the query that generated the server message. The value range is from 0 to 2147483647.

SqlMessage.Message: This required element of string type describes the text of the server message.

SqlMessage.Number: This required element of simple type **nonNegativeInteger** describes the identity number of the server message. The set of identity numbers is defined by the server.

SqlMessage.Procedure: This optional element of string type describes the name of the server-side method that generated this server message.

SqlMessage.Server: This optional element of string type describes the name of the server that generated this server message.

SqlMessage.Source: This required element of string type describes the name of the source that generated this server message. <1>

SqlMessage.State: This required element of simple type **nonNegativeInteger** describes the server state that generated the server message. Some messages apply to multiple server scenarios and this state number is used to identify the scenario that generated the message. The set of state numbers is defined by the server. The value range is from 0 to 2147483647.

2.2.2.2.1.1.4 sqlbatchResult.SqlRowCount

sqlbatchResponse.sqlbatchResult.SqlRowCount: This element of complex type **SqlRowCount** describes the portion of the response representing the affected rows resulting from the query. The affected rows include the number of rows in the resultset and the number of rows inserted/deleted/updated, and so on. The **SqlRowCount** type is defined under the "http://schemas.microsoft.com/sqlserver/2004/SOAP/types/SqlRowCount" namespace as the following.

```
<xsd:complexType name="SqlRowCount">
  <xsd:sequence minOccurs="1" maxOccurs="1">
    <xsd:element name="Count" type="xsd:long" />
  </xsd:sequence>
</xsd:complexType>
```

SqlRowCount.Count: This required element of XML long type describes the resulting number of rows affected by the query statement specified in the **BatchCommands** element of the request.

2.2.2.2.1.1.5 sqlbatchResult.SqlResultCode

sqlbatchResponse.sqlbatchResult.SqlResultCode: This element of simple type **SqlResultCode** describes the portion of the response representing the return value of the entire request, if any. The **SqlResultCode** type is defined under the "http://schemas.microsoft.com/sqlserver/2004/SOAP/types" namespace as the following.

```
<xsd:simpleType name="SqlResultCode">
  <xsd:restriction base="xsd:int">
    <xsd:minInclusive value="0" />
  </xsd:restriction>
</xsd:simpleType>
```

SqlResultCode: This simple type describes the return value of the entire request. The server MAY choose to specify a return value. The data is of type XML int and has a value range from 0 to 2147483647.

2.2.2.2.1.1.6 sqlbatchResult.SqlTransaction

sqlbatchResponse.sqlbatchResult.SqlTransaction: This element of complex type **SqlTransaction** describes the portion of the response representing the intermediary transaction token that MAY be used to associate a request to a particular transaction. The **SqlTransaction** type is defined under the "http://schemas.microsoft.com/sqlserver/2004/SOAP/types/SqlTransaction" namespace as the following.

```
<xsd:complexType name="SqlTransaction">
  <xsd:sequence minOccurs="1" maxOccurs="1">
    <xsd:element name="Descriptor" type="xsd:base64Binary" />
    <xsd:element name="Type">
      <xsd:simpleType>
        <xsd:restriction base="xsd:string">
          <xsd:enumeration value="Begin" />
        </xsd:restriction>
      </xsd:simpleType>
    </xsd:element>
  </xsd:sequence>
</xsd:complexType>
```

```

        <xsd:enumeration value="Commit"/>
        <xsd:enumeration value="Rollback"/>
        <xsd:enumeration value="EnlistDTC"/>
        <xsd:enumeration value="Defect"/>
    </xsd:restriction>
</xsd:simpleType>
</xsd:element>
</xsd:sequence>
</xsd:complexType>

```

SqlTransaction.Descriptor: This required element of XML base64 binary type describes the token value of the transaction ID.

SqlTransaction.Type: This required element of simple enumeration type describes the state of the transaction. The supported values are listed in the following table.

Value	Meaning
Begin	The transaction has been started. The token value specified within the Descriptor element MUST be used to rejoin/commit/roll back/defect the transaction.
Commit	The transaction has been committed. The token value specified within the Descriptor element specifies the specific transaction that was committed.
Rollback	The transaction has been rolled back. The token value specified within the Descriptor element specifies the specific transaction that was rolled back.
EnlistDTC	The distributed transaction has been started. The token value specified within the Descriptor element MUST be used to rejoin/commit/roll back/defect the transaction.
Defect	The distributed transaction has been stopped. The token value specified within the Descriptor element specifies the specific transaction that was stopped.

2.2.2.2.2 sqlbatchSoapOut SOAP Header

Besides the required SOAP body, the sqlbatchSoapOut message also supports the optional SOAP header, **sqlSession**. The SOAP header allowed is defined in the "http://schemas.microsoft.com/sqlserver/2004/SOAP/Options" namespace.

```

<xsd:element name="sqlSession">
  <xsd:annotation>
    <xsd:documentation>SQL Server SOAP
    Session</xsd:documentation>
  </xsd:annotation>
  <xsd:complexType>
    <xsd:attribute name="terminate"
    default="false" type="xsd:boolean" form="unqualified">
    <xsd:annotation>
      <xsd:documentation>Set to 'true' to request to
      terminate an existing session.</xsd:documentation>
    </xsd:annotation>
  </xsd:attribute>
    <xsd:attribute name="sessionId" type="xsd:base64Binary"
    form="unqualified">
    <xsd:annotation>

```

```

        <xsd:documentation>The ID of a
session.</xsd:documentation>
    </xsd:annotation>
</xsd:attribute>
    <xsd:attribute name="timeout" type="xsd:int"
form="unqualified">
    <xsd:annotation>
        <xsd:documentation>The timeout in seconds before
the session expires.</xsd:documentation>
    </xsd:annotation>
</xsd:attribute>
    <xsd:attribute name="transactionDescriptor"
type="xsd:base64Binary" form="unqualified">
    <xsd:annotation>
        <xsd:documentation>The descriptor of a
transaction to enlist to.</xsd:documentation>
    </xsd:annotation>
</xsd:attribute>
</xsd:complexType>
</xsd:element>

```

The SOAP header element does not make use of the standard SOAP **mustUnderstand** attribute and the **actor** attribute. The details of the SOAP header are described in section [2.2.2.2.1](#).

2.2.2.2.1 sqlSession SOAP Header

sqlSession: This optional element provides the ability for the server to notify the client about the current state of a named query session initiated by the client. The current state is provided to the client through the use of the associated optional attributes described in the following paragraphs.

sqlSession.terminate: This optional attribute of Boolean type describes whether or not the server has terminated the session specified by the **sessionId** attribute. This attribute has a default value of false. The allowed values are listed in the following table.

Value	Meaning
true	The server terminated the session specified by the sessionId attribute.
false	The server did not terminate the session specified by the sessionId attribute.

sqlSession.sessionId: This optional attribute of XML base64 binary type specifies the session token. This token is first generated by the server when a new session is created. If the client sent a request with a valid **sessionId**, then the server MUST specify the same **sessionId** in the response.

sqlSession.timeout: This optional attribute of XML int type specifies the duration, in seconds, of inactivity in the session before the server will terminate the session.

sqlSession.transactionDescriptor: This optional attribute of XML base64 binary type specifies the transaction token. This token is first returned by the server in the **sqlbatchResponse.sqlbatchResult.SqlTransaction** element of the **sqlbatchSoapOut** message, described in the **SqlTransaction.Descriptor**. If the client sent a request with a valid **transactionDescriptor**, then the server SHOULD specify the same **transactionDescriptor** in the response.

2.2.3 Elements

None.

2.2.4 Complex Types

The following table summarizes the common XML schema complex type definition defined by this specification. XML schema complex type definitions that are specific to a particular operation are described with the operation.

Complex type	Description
ArrayOfSqlParameter	Defines the list of parameters associated with the WSDL message.

2.2.4.1 ArrayOfSqlParameter

This common complex type is used to specify the set of input/output parameters associated with the WSDL message. This protocol does not bound the upper limit of the number of occurrences of the **SqlParameter** element, but the upper application layer can determine a limit.

The following set of XML namespaces is used throughout this section:

xmlns:sqlparameter=

"http://schemas.microsoft.com/sqlserver/2004/SOAP/types/SqlParameter"

xmlns:sqltypes="http://schemas.microsoft.com/sqlserver/2004/sqltypes"

Referenced by the **Parameters** element in both the sqlbatchSoapIn and the sqlbatchSoapOut WSDL message, the **ArrayOfSqlParameter** complex type is defined under the "http://schemas.microsoft.com/sqlserver/2004/SOAP/types/SqlParameter" namespace as the following.

```
<xsd:complexType name="ArrayOfSqlParameter">
  <xsd:sequence>
    <xsd:element minOccurs="0"
maxOccurs="unbounded" name="SqlParameter"
type="sqlparameter:SqlParameter" />
  </xsd:sequence>
</xsd:complexType>
<xsd:complexType name="SqlParameter">
  <xsd:sequence>
    <xsd:element minOccurs="1" maxOccurs="1"
name="Value" nillable="true" />
  </xsd:sequence>
  <xsd:attribute name="name" type="xsd:string"
use="required" form="unqualified" />
  <xsd:attribute default="NVarChar" name="sqlDbType"
type="sqltypes:sqlDbTypeEnum" use="optional"
form="unqualified" />
  <xsd:attribute default="Input" name="direction"
type="sqlparameter:ParameterDirection" use="optional"
form="unqualified" />
  <xsd:attribute default="1" name="maxLength"
type="xsd:long" use="optional" form="unqualified" />
  <xsd:attribute default="18" name="precision"
type="xsd:unsignedByte" use="optional" />
</xsd:complexType>
```

```

form="unqualified" />
  <xsd:attribute default="0" name="scale"
type="xsd:unsignedByte" use="optional"
form="unqualified" />
  <xsd:attribute default="" name="clrTypeName"
type="xsd:string" use="optional" form="unqualified" />
  <xsd:attribute default="Default" name="sqlCompareOptions"
type="sqltypes:sqlCompareOptionsList" use="optional"
form="unqualified" />
  <xsd:attribute default="-1" name="localeId"
type="xsd:int" use="optional" form="unqualified" />
  <xsd:attribute default="0" name="sqlCollationVersion"
type="xsd:int" use="optional" form="unqualified" />
  <xsd:attribute default="0" name="sqlSortId"
type="xsd:int" use="optional" form="unqualified" />
  <xsd:attribute default="" name="xmlSchemaCollection"
type="xsd:string" use="optional" form="unqualified" />
</xsd:complexType>

<xsd:simpleType name="ParameterDirection">
  <xsd:restriction base="xsd:string">
    <xsd:enumeration value="Input" />
    <xsd:enumeration value="InputOutput" />
  </xsd:restriction>
</xsd:simpleType>

```

Details of the **ArrayOfSqlParameter** complex type are described in sections [2.2.4.1.1](#), [2.2.4.1.2](#), and [2.2.5.3](#).

2.2.4.1.1 SqlParameter

SqlParameter: This complex type element defines the individual parameters associated with the query. When specified as part of the sqlbatchSoapIn WSDL message, this element represents an input parameter. The properties of the input parameter are defined by the various attributes and subelements associated with this element. When specified as part of the sqlbatchSoapOut WSDL message, this element represents an output parameter. The properties of the output parameter are defined by the various attributes and subelements associated with this element.

SqlParameter.name: This string type attribute **MUST** exist if a **SqlParameter** element is specified. This attribute is used to specify the name of the parameter. The value of this attribute is limited to 128 characters, which is the maximum number of characters allowed in a SQL Server identifier.

SqlParameter.sqlDbType: This enumeration simple type attribute **MAY** exist if a **SqlParameter** element is specified. This attribute is used to specify the SQL Server data type that the parameter value **MUST** be treated as by the server. The default value of this attribute is "NVarChar". The set of supported values is defined by the **sqlDbTypeEnum** simple type, which is documented in section [2.2.5.3](#).

SqlParameter.direction: This enumeration simple type attribute **MAY** exist if a **SqlParameter** element is specified. This attribute is used to specify the direction of the parameter. The default value of this attribute is "Input". The supported values are listed in the following table.

Value	Meaning
Input	This parameter is an input-only parameter. The server will not return any values for this

Value	Meaning
	parameter.
InputOutput	This parameter is an input and output parameter. The server will return a value for this parameter.

SqlParameter.maxLength: This long type attribute MAY exist if a **SqlParameter** element is specified. The default value of this attribute is "1". This attribute is used to specify the maximum length of the parameter defined by the following **sqlDbType** data types.

sqlDbType	Value range
Binary	0 – 8000
VarBinary	-1, 0 – 8000 Note: -1 denotes varbinary (max)
Char	0 – 8000
NChar	0 – 4000
NVarChar	-1, 0 – 4000 Note: -1 denotes nvarchar (max)
VarChar	-1, 0 – 8000 Note: -1 denotes varchar (max)

SqlParameter.precision: This unsigned byte type attribute MAY exist if a **SqlParameter** element is specified. The default value of this attribute is "18". This attribute is used to specify the precision of the parameter defined by the following **sqlDbType** data types.

sqlDbType	Value range
Decimal	0 – 38
Float	0 – 38
Money	0 – 3
Real	0 – 38
SmallMoney	0 – 3

SqlParameter.scale: This unsigned byte type attribute MAY exist if a **SqlParameter** element is specified. The default value of this attribute is "0". This attribute is used to specify the scale of the parameter defined by the following **sqlDbType** data types.

sqlDbType	Value range
Decimal	0 – 38
Float	0 – 38
Real	0 – 38

SqlParameter.clrTypeName: This string type attribute MAY exist if a **SqlParameter** element is specified. This attribute is used to specify the name of the common language runtime (CLR) data type for the parameter when the **sqlDbType** attribute has a value of "Udt". The default value of this attribute is empty string (""). The set of supported values depends on the set of CLR user-defined type (UDT) values defined in the SQL Server instance. The full three-part name of the CLR UDT SHOULD be used when specifying this attribute value.

SqlParameter.sqlCompareOptions: This enumeration simple type attribute MAY exist if a **SqlParameter** element is specified. This attribute is used by SQL Server string data types to specify how character values are compared and sorted. The default value of this attribute is "Default", which defers to the setting defined by the connected server. The set of supported values is defined by the **sqlCompareOptionsList** simple type, described in section [2.2.5.1](#).

SqlParameter.localeId: This int type attribute MAY exist if a **SqlParameter** element is specified. This attribute is used to specify the collation of the parameter character value. The default value of this attribute is "-1". A value of "-1" tells the server to use the locale of the current database. For example, if the parameter is of data type varchar and the locale is specified as Japanese, then the server will convert the parameter's XML character value to Japanese.

Note Specifying a localeId value that is different from the current database localeId MAY cause additional data conversions, depending on the query.

SqlParameter.sqlCollationVersion: This int type attribute MAY exist if a **SqlParameter** element is specified. This attribute is used by SQL Server string data types to specify the version of the collation. The default value of this attribute is "0". [<2>](#)

SqlParameter.sqlSortId: This int type attribute MAY exist if a **SqlParameter** element is specified. This attribute is used by SQL Server string data types to specify the SQL Server sort id. The default value of this attribute is "0". The set of supported values is defined by [\[MSDN-SQLCollation\]](#).

SqlParameter.xmlSchemaCollation: This string type attribute MAY exist if a **SqlParameter** element is specified. This attribute is used to specify the name of the XML schema collection of the parameter when the **sqlDbType** attribute has a value of "Xml". The default value of this attribute is empty string (""). The set of supported values depends on the set of XML schema collections defined in the SQL Server instance. The full three-part name of the XML schema collection SHOULD be used when specifying this attribute value.

2.2.4.1.2 SqlParameter.Value

SqlParameter.Value: This required element MUST exist if a **SqlParameter** element is specified. This element is used to specify the value of the parameter. All the standard rules of XML element values apply. To specify a binary value, it MUST be encoded in base64 encoding. To specify XML data values and CLR UDT data values, the value is specified in text XML format [\[MSDN-XMLSNET\]](#) or a serialization format defined by the implementer of the CLR UDT data type. All other data type values are specified in standard XML string value format.

Following the standard [\[XML10\]](#) rules, this element supports specifying the standard xsi:type attribute. The list of supported values for the xsi:type attribute is limited to standard XML data types and the types defined under the following "http://schemas.microsoft.com/sqlserver/2004/sqltypes" namespace. Refer to section [2.2.5.2](#) for the complete list. If an unknown xsi:type value is specified, the server will return a [SOAP fault](#) message containing "UnsupportedXsiType".

2.2.5 Simple Types

The following table summarizes the set of common XML schema simple type definitions defined by this specification. XML schema simple type definitions that are specific to a particular operation are described with the operation.

Simple type	Description
sqlCompareOptionsList	Defines the set of options used for string value comparisons associated with a string parameter or result data column.
sqlTypes	Defines the set of data types that represent supported SQL Server data types in terms of the XML data type.

2.2.5.1 sqlCompareOptionsList

This common simple type is used to specify the set of string value comparison options associated with the string parameter or result data column. The following XML namespace is used throughout this section:

```
xmlns:sqltypes="http://schemas.microsoft.com/sqlserver/2004/sqltypes"
```

Referenced by the **sqlCompareOptions** attribute within the **ArrayOfSqlParameter** complex type, the **sqlCompareOptionsList** type is defined under the "http://schemas.microsoft.com/sqlserver/2004/sqltypes" namespace as the following.

```
<xsd:simpleType name="sqlCompareOptionsList">
  <xsd:list itemType="sqltypes:sqlCompareOptionsEnum" />
</xsd:simpleType>

<xsd:simpleType name="sqlCompareOptionsEnum">
  <xsd:restriction base="xsd:string">
    <xsd:enumeration value="Default" />
    <xsd:enumeration value="None" />
    <xsd:enumeration value="IgnoreCase" />
    <xsd:enumeration value="IgnoreNonSpace" />
    <xsd:enumeration value="IgnoreKanaType" />
    <xsd:enumeration value="IgnoreWidth" />
    <xsd:enumeration value="BinarySort" />
    <xsd:enumeration value="BinarySort2" />
  </xsd:restriction>
</xsd:simpleType>
```

The **sqlCompareOptionsList** simple type is a list of values defined by the **sqlCompareOptionsEnum** simple enumeration type. Each of the compare options tells the server how string comparisons SHOULD be evaluated when using Windows Collations. The supported values are listed in the following table. [<3>](#)

Value	Meaning
Default	Use the database default string comparison settings.
IgnoreCase IgnoreNonSpace IgnoreKanaType IgnoreWidth	Case-insensitive, accent-insensitive, kana-insensitive, width-insensitive.

Value	Meaning
IgnoreCase IgnoreNonSpace IgnoreWidth	Case-insensitive, accent-insensitive, kana-sensitive, width-insensitive.
IgnoreCase IgnoreNonSpace	Case-insensitive, accent-insensitive, kana-sensitive, width-sensitive.
IgnoreCase IgnoreNonSpace IgnoreKanaType	Case-insensitive, accent-insensitive, kana-insensitive, width-sensitive.
IgnoreCase IgnoreKanaType IgnoreWidth	Case-insensitive, accent-sensitive, kana-insensitive, width-insensitive.
IgnoreCase IgnoreWidth	Case-insensitive, accent-sensitive, kana-sensitive, width-insensitive.
IgnoreCase	Case-insensitive, accent-sensitive, kana-sensitive, width-sensitive.
IgnoreCase IgnoreKanaType	Case-insensitive, accent-sensitive, kana-insensitive, width-sensitive.
IgnoreNonSpace IgnoreKanaType IgnoreWidth	Case-sensitive, accent-insensitive, kana-insensitive, width-insensitive.
IgnoreNonSpace IgnoreWidth	Case-sensitive, accent-insensitive, kana-sensitive, width-insensitive.
IgnoreNonSpace	Case-sensitive, accent-insensitive, kana-sensitive, width-sensitive.
IgnoreNonSpace IgnoreKanaType	Case-sensitive, accent-insensitive, kana-insensitive, width-sensitive.
IgnoreKanaType IgnoreWidth	Case-sensitive, accent-sensitive, kana-insensitive, width-insensitive.
IgnoreWidth	Case-sensitive, accent-sensitive, kana-sensitive, width-insensitive.
IgnoreKanaType	Case-sensitive, accent-sensitive, kana-insensitive, width-sensitive.
None	Case-sensitive, accent-sensitive, kana-sensitive, width-sensitive.

2.2.5.2 sqlTypes

The following set of simple types defines SQL Server data types in terms of XML data types. These types are defined under the "http://schemas.microsoft.com/sqlserver/2004/sqltypes" namespace, typically referred to using the sqltypes prefix.

```

<xsd:simpleType name="char">
  <xsd:restriction base="xsd:string"/>
</xsd:simpleType>
<xsd:simpleType name="nchar">
  <xsd:restriction base="xsd:string"/>
</xsd:simpleType>

```

```

<xsd:simpleType name="varchar">
  <xsd:restriction base="xsd:string"/>
</xsd:simpleType>
<xsd:simpleType name="nvarchar">
  <xsd:restriction base="xsd:string"/>
</xsd:simpleType>
<xsd:simpleType name="text">
  <xsd:restriction base="xsd:string"/>
</xsd:simpleType>
<xsd:simpleType name="ntext">
  <xsd:restriction base="xsd:string"/>
</xsd:simpleType>
<xsd:simpleType name="varbinary">
  <xsd:restriction base="xsd:base64Binary"/>
</xsd:simpleType>
<xsd:simpleType name="binary">
  <xsd:restriction base="xsd:base64Binary"/>
</xsd:simpleType>
<xsd:simpleType name="image">
  <xsd:restriction base="xsd:base64Binary"/>
</xsd:simpleType>
<xsd:simpleType name="timestamp">
  <xsd:restriction base="xsd:base64Binary">
    <xsd:maxLength value="8"/>
  </xsd:restriction>
</xsd:simpleType>
<xsd:simpleType name="timestampNumeric">
  <!-- The timestampNumeric type supports a
  legacy format of timestamp. -->
  <xsd:restriction base="xsd:long"/>
</xsd:simpleType>
<xsd:simpleType name="decimal">
  <xsd:restriction base="xsd:decimal"/>
</xsd:simpleType>
<xsd:simpleType name="numeric">
  <xsd:restriction base="xsd:decimal"/>
</xsd:simpleType>
<xsd:simpleType name="bigint">
  <xsd:restriction base="xsd:long" />
</xsd:simpleType>
<xsd:simpleType name="int">
  <xsd:restriction base="xsd:int"/>
</xsd:simpleType>
<xsd:simpleType name="smallint">
  <xsd:restriction base="xsd:short"/>
</xsd:simpleType>
<xsd:simpleType name="tinyint">
  <xsd:restriction base="xsd:unsignedByte"/>
</xsd:simpleType>
<xsd:simpleType name="bit">
  <xsd:restriction base="xsd:boolean"/>
</xsd:simpleType>
<xsd:simpleType name="float">
  <xsd:restriction base="xsd:double"/>
</xsd:simpleType>
<xsd:simpleType name="real">
  <xsd:restriction base="xsd:float"/>
</xsd:simpleType>
<xsd:simpleType name="datetime">

```

```

    <xsd:restriction base="xsd:dateTime">
      <xsd:pattern value="( (000[1-9]) | (00[1-9][0-9]) | (0[1-9][0-9]{2}) | ([1-9][0-9]{3})) - ((0[1-9]) | (1[012])) - ((0[1-9]) | ([12][0-9]) | (3[01])) T(( [01][0-9]) | (2[0-3])) (: [0-5][0-9]) {2} (\.[0-9]{2}[037]) ?" />
      <xsd:maxInclusive value="9999-12-31T23:59:59.997" />
      <xsd:minInclusive value="1753-01-01T00:00:00.000" />
    </xsd:restriction>
  </xsd:simpleType>
</xsd:simpleType name="smalldatetime">
  <xsd:restriction base="xsd:dateTime">
    <xsd:pattern value="( (000[1-9]) | (00[1-9][0-9]) | (0[1-9][0-9]{2}) | ([1-9][0-9]{3})) - ((0[1-9]) | (1[012])) - ((0[1-9]) | ([12][0-9]) | (3[01])) T(( [01][0-9]) | (2[0-3])) (: [0-5][0-9]) (:00)" />
    <xsd:maxInclusive value="2079-06-06T23:59:00" />
    <xsd:minInclusive value="1900-01-01T00:00:00" />
  </xsd:restriction>
</xsd:simpleType>
<xsd:simpleType name="money">
  <xsd:restriction base="xsd:decimal">
    <xsd:totalDigits value="19" />
    <xsd:fractionDigits value="4" />
    <xsd:maxInclusive value="922337203685477.5807" />
    <xsd:minInclusive value="-922337203685477.5808" />
  </xsd:restriction>
</xsd:simpleType>
<xsd:simpleType name="smallmoney">
  <xsd:restriction base="xsd:decimal">
    <xsd:totalDigits value="10" />
    <xsd:fractionDigits value="4" />
    <xsd:maxInclusive value="214748.3647" />
    <xsd:minInclusive value="-214748.3648" />
  </xsd:restriction>
</xsd:simpleType>
<xsd:simpleType name="uniqueidentifier">
  <xsd:restriction base="xsd:string">
    <xsd:pattern value="( [0-9a-fA-F]{8}-[0-9a-fA-F]{4}-[0-9a-fA-F]{4}-[0-9a-fA-F]{4}-[0-9a-fA-F]{12}) | (\{ [0-9a-fA-F]{8}-[0-9a-fA-F]{4}-[0-9a-fA-F]{4}-[0-9a-fA-F]{4}-[0-9a-fA-F]{12} \})" />
  </xsd:restriction>
</xsd:simpleType>
<!-- sql_variant directly maps to xsd:anyType -->
<xsd:complexType name="xml" mixed="true">
  <xsd:sequence>
    <xsd:any minOccurs="0" maxOccurs="unbounded" processContents="skip" />
  </xsd:sequence>
</xsd:complexType>
<!-- the following type is for FOR XML binary URL results only -->
<xsd:simpleType name="dbobject">
  <xsd:restriction base="xsd:anyURI" />
</xsd:simpleType>

```

The SQL Server equivalent data types are listed in the following table.

Value	Meaning
sqltypes:char	SQL Server char data type.
sqltypes:nchar	SQL Server nchar data type.
sqltypes:varchar	SQL Server varchar data type.
sqltypes:nvarchar	SQL Server nvarchar data type.
sqltypes:text	SQL Server text data type.
sqltypes:ntext	SQL Server ntext data type.
sqltypes:varbinary	SQL Server varbinary data type.
sqltypes:binary	SQL Server binary data type.
sqltypes:image	SQL Server image data type.
sqltypes:timestamp	SQL Server timestamp data type.
sqltypes:decimal	SQL Server decimal data type.
sqltypes:numeric	SQL Server numeric data type.
sqltypes:bigint	SQL Server bigint data type.
sqltypes:int	SQL Server int data type.
sqltypes:smallint	SQL Server smallint data type.
sqltypes:tinyint	SQL Server tinyint data type.
sqltypes:bit	SQL Server bit data type.
sqltypes:float	SQL Server float data type.
sqltypes:real	SQL Server real data type.
sqltypes:datetime	SQL Server datetime data type.
sqltypes:smalldatetime	SQL Server smalldatetime data type.
sqltypes:money	SQL Server money data type.
sqltypes:smallmoney	SQL Server smallmoney data type.
sqltypes:uniqueidentifier	SQL Server uniqueidentifier data type.
sqltypes:xml	SQL Server xml data type.
xsd:any	SQL Server CLR UDT data type.

In this table, the CLR UDT data type is mapped to XML schema of xsd:any. This protocol itself does not define the XML structure of a user-defined type value; it only defines the mechanism by which a user-defined type value can be exchanged. It is the user-defined type creator's responsibility to define the XML representation for the type and to provide the XML schema of the type to the client application. The transfer of the XML schema between the user-defined type creator and the client

application is done out of band. For additional information about using CLR's XML serialization attributes to control the XML serialization format, refer to [\[MSDN-XMLSNET\]](#).

2.2.5.3 sqlDbTypeEnum

This **sqlDbTypeEnum** simple type is defined under the "http://schemas.microsoft.com/sqlserver/2004/sqltypes" namespace as the following.

```
<xsd:simpleType name="sqlDbTypeEnum">
  <xsd:restriction base="xsd:string">
    <xsd:enumeration value="BigInt" />
    <xsd:enumeration value="Binary" />
    <xsd:enumeration value="Bit" />
    <xsd:enumeration value="Char" />
    <xsd:enumeration value="DateTime" />
    <xsd:enumeration value="Decimal" />
    <xsd:enumeration value="Float" />
    <xsd:enumeration value="Image" />
    <xsd:enumeration value="Int" />
    <xsd:enumeration value="Money" />
    <xsd:enumeration value="NChar" />
    <xsd:enumeration value="NText" />
    <!-- The sqlDbTypeEnum aligns with
the .Net System.Data.SqlDbType enum and
does not provide an entry for
Numeric (which is mapped to Decimal). -->
    <xsd:enumeration value="NVarChar" />
    <xsd:enumeration value="Real" />
    <xsd:enumeration value="SmallDateTime" />
    <xsd:enumeration value="SmallInt" />
    <xsd:enumeration value="SmallMoney" />
    <xsd:enumeration value="Text" />
    <xsd:enumeration value="Timestamp" />
    <xsd:enumeration value="TinyInt" />
    <xsd:enumeration value="Udt" />
    <xsd:enumeration value="UniqueIdentifier" />
    <xsd:enumeration value="VarBinary" />
    <xsd:enumeration value="VarChar" />
    <xsd:enumeration value="Variant" />
    <xsd:enumeration value="Xml" />
  </xsd:restriction>
</xsd:simpleType>
```

The **sqlDbTypeEnum** simple type defines the set of supported values for the **sqlDbType** attribute of the **SqlParameter** element. The equivalent SQL Server data types for each of the **sqlDbTypeEnum** values are listed in the following table.

Value	Meaning
BigInt	Bigint
Binary	Binary
Bit	Bit
Char	Char

Value	Meaning
DateTime	Datetime
Decimal	Decimal; numeric
Float	Float
Image	Image
Int	Int
Money	Money
NChar	Nchar
NText	Ntext
NVarChar	Nvarchar
Real	Real
SmallDateTime	Smalldatetime
SmallInt	Smallint
SmallMoney	Smallmoney
Text	Text
Timestamp	Timestamp
TinyInt	Tinyint
Udt	UDT; CLR UDT
UniqueIdentifier	globally unique identifier (GUID) ; UniqueID
VarBinary	Varbinary
VarChar	Varchar
Variant	Sql_variant
Xml	XML; schema-bounded XML

2.2.6 Attributes

None.

2.2.7 Groups

None.

2.2.8 Attribute Groups

None.

2.3 Directory Service Schema Elements

None.

Preliminary

3 Protocol Details

The client side of this protocol is simply a pass-through. That is, no additional timers or other state is required on the client side of this protocol. Calls made by the higher-layer protocol or application are passed directly to the transport, and the results returned by the transport are passed directly back to the higher-layer protocol or application.

3.1 Batch_EPSoap Server Details

This section describes the server behavior of the [MS-SSNWS] protocol. This port type supports one WSDL operation: sqlbatch.

3.1.1 Abstract Data Model

This section describes a conceptual model of the possible data organization that an implementation maintains to participate in this protocol. This information helps to explain how the protocol behaves. This document does not mandate that implementations adhere to this model as long as their external behavior is consistent with what is described in this document.

3.1.2 Timers

The [MS-SSNWS] protocol has an authentication timer and a session timer that the server SHOULD implement. The protocol does not have a timer on a data stream.

3.1.3 Initialization

The server MUST establish a listening endpoint based on the transport protocols described in section [2.1](#). The server MAY establish additional listening endpoints.

When a client makes a connection request, the transport layer listening endpoint SHOULD initialize all resources required for this connection so that the server will be ready to receive a sqlbatchSoapIn message.

3.1.4 Message Processing Events and Sequencing Rules

Operation	Description
sqlbatch	This operation enables the client application to execute ad-hoc SQL Server query statements, including parameterized statements.

3.1.4.1 Single sqlbatch

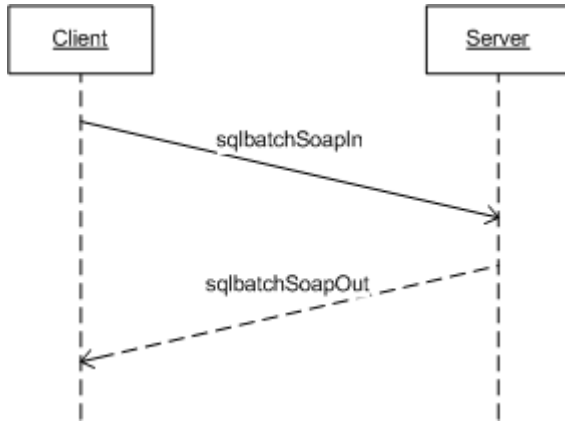


Figure 4: Single sqlbatch operation

This section and its subsections describe the scenario in which the client sends one-off sqlbatch requests to the server. The sqlbatch operation has an input message named sqlbatchSoapIn and an output message named sqlbatchSoapOut, as shown in the following WSDL snippet for this operation.

```
<wsdl:operation name="sqlbatch">
  <wsdl:input message="tns:sqlbatchSoapIn"/>
  <wsdl:output message="tns:sqlbatchSoapOut"/>
</wsdl:operation>
```

As shown in this figure, only one SOAP message sequence is required to execute a SQL Server query statement. At any time throughout the entire SOAP message parsing process, if there are any parsing errors, then the server will return a SOAP fault message and close the connection.

3.1.4.1.1 Messages

The following WSDL message definitions are specific to this operation.

3.1.4.1.1.1 sqlbatchSoapIn

```
<wsdl:message name="sqlbatchSoapIn">
  <wsdl:part name="parameters" element="sql:sqlbatch"/>
</wsdl:message>
```

3.1.4.1.1.2 sqlbatchSoapOut

```
<wsdl:message name="sqlbatchSoapOut">
  <wsdl:part name="parameters" element="sql:sqlbatchResponse"/>
</wsdl:message>
```

3.1.4.1.2 Elements

The following XML schema element definitions are specific to this operation.

3.1.4.1.2.1 sqlbatch

This element structure is described by the WSDL message sqlbatchSoapIn in section [2.2.2.1](#).

The server parses through the SOAP body to look for the **sqlbatch** element. Once the **sqlbatch** element is found, the server parses the **BatchCommands** element and the **Parameters** element. It then passes the data to the upper layer for execution. As mentioned earlier, if there are any parsing errors, then the server MUST return a SOAP fault message. If an error occurs during the execution in the upper layer, the upper layer SHOULD return the error in a **SqlMessage** element as part of the **SqlResultStream**. The upper layer MAY determine that it is not able to return the error in a **SqlMessage** element and terminate the connection.

3.1.4.1.2.2 sqlbatchResponse

This element structure is described by the WSDL message sqlbatchSoapOut in section [2.2.2.2](#).

When the upper layer finishes execution, the upper layer provides the data to be sent back to the client. The server sends the SOAP message response using the **sqlbatchResponse** element. The result of the query execution is returned in the **sqlbatchResult** element, in accordance with the **SqlResultStream** complex type, while output parameters, if any, are returned in the **Parameters** element, in accordance with the **ArrayOfSqlParameter** complex type.

3.1.4.1.3 Complex Types

The XML schema complex type definitions specific to this operation are described in sections [3.1.4.1.3.1](#) and [3.1.4.1.3.2](#).

3.1.4.1.3.1 SqlResultStream

When sending a response, the server generates the XML as defined by this complex type as part of the **sqlbatchResponse** element to return the query execution result.

3.1.4.1.3.2 ArrayOfSqlParameter

When the server encounters this complex type as part of the **sqlbatch** element, the server creates and defines the list of parameters specified by this complex type.

When sending a response, the server generates the XML as defined by this complex type as part of the **sqlbatchResponse** element to return output parameter values.

3.1.4.1.4 Simple Types

The XML schema simple type definitions specific to this operation are described in section [3.1.4.1.4.1](#).

3.1.4.1.4.1 ParameterDirection

When the server is processing each **SqlParameter** element, it may encounter this simple type, which defines whether the parameter is an input-only parameter or an input/output parameter. Refer to the **SqlParameter.direction** element in section [2.2.4.1.1](#) for details.

3.1.4.1.5 Attributes

None.

3.1.4.1.6 Groups

None.

3.1.4.1.7 Attribute Groups

None.

3.1.4.2 Session-based sqlbatch

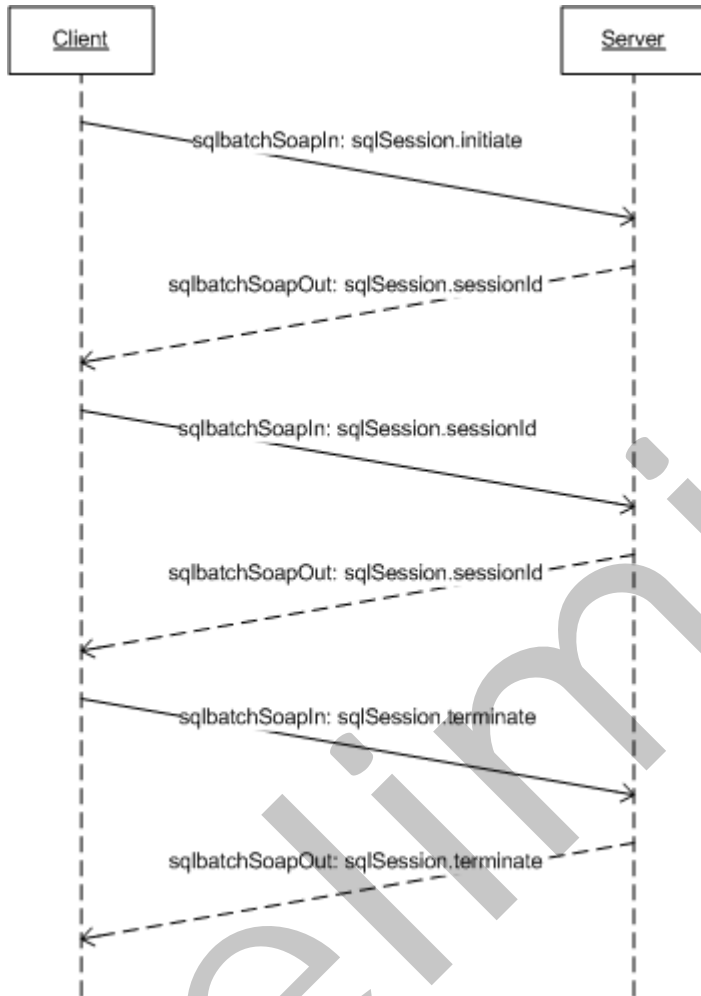


Figure 5: Session-based sqlbatch operation

This section and its subsections describe the scenario in which the client is establishing a session to enable subsequent SOAP messages to participate in the same SQL Server session environment. The sqlbatch operation has an input message named sqlbatchSoapIn and an output message named sqlbatchSoapOut, as shown in the following WSDL snippet for this operation.

```
<wsdl:operation name="sqlbatch">
  <wsdl:input message="tns:sqlbatchSoapIn"/>
```

```
<wsdl:output message="tns:sqlbatchSoapOut"/>
</wsdl:operation>
```

As shown in this figure, the client MUST first send a sqlbatchSoapIn message with the **sqlSession** SOAP header, described in section [2.2.2.1.2.10](#), **Initiate** attribute set to true. In the sqlbatchSoapOut response message, if no errors occur, the server MUST set the **sqlSession** SOAP header, described in section [2.2.2.2.1](#), **sessionId** attribute to the value of the ID. The server SHOULD also set the **sqlSession.timeout** attribute to the session timeout value. The client can then send additional sqlbatchSoapIn messages with the same ID value for the **sqlSession.sessionId** attribute so that each message is executed in the same server environment context. When the client is done with the session, the client SHOULD send a sqlbatchSoapIn message with the **sqlSession.sessionId** attribute set to the ID value and the **sqlSession.terminate** attribute set to true. This will allow the server to release any resources held by the session without the need to wait until the timeout expires. If no errors occur, the server MUST send a sqlbatchSoapOut response message with the **sqlSession.terminate** attribute set to true and the **sqlSession.sessionId** attribute set to the value of the ID. At any time throughout the various SOAP message exchanges, if there are any parsing errors, then the server will return a SOAP fault message and close the connection.

3.1.4.2.1 Messages

The following WSDL message definitions are specific to this operation.

3.1.4.2.1.1 sqlbatchSoapIn

```
<wsdl:message name="sqlbatchSoapIn">
  <wsdl:part name="parameters" element="sql:sqlbatch"/>
</wsdl:message>
```

3.1.4.2.1.2 sqlbatchSoapOut

```
<wsdl:message name="sqlbatchSoapOut">
  <wsdl:part name="parameters" element="sql:sqlbatchResponse"/>
</wsdl:message>
```

3.1.4.2.2 Elements

The following XML schema element definitions are specific to this operation.

3.1.4.2.2.1 sqlSession

This element structure is described in section [2.2.2.1.2.10](#).

When the server receives a sqlbatchSoapIn message, it parses the SOAP header to look for the **sqlSession** element. When the **sqlSession** element is found, the server parses the associated attributes. It then passes the data to the upper layer for execution. As mentioned earlier, if there are any parsing errors, then the server MUST return a SOAP fault message. If an error occurs during the execution in the upper layer, the upper layer SHOULD return the error in a **SqlMessage** element as part of the **SqlResultStream** whenever possible.

When the server is returning a sqlbatchSoapOut message, the server-side upper layer will determine if a **sqlSession** element is to be specified as part of the response.

3.1.4.2.2.2 sqlbatch

This element structure is defined by the WSDL message sqlbatchSoapIn as described in section [2.2.2.1](#).

The server parses through the SOAP body to look for the **sqlbatch** element. When the **sqlbatch** element is found, the server parses the **BatchCommands** element and the **Parameters** element. It then passes the data to the upper layer for execution. As mentioned above, if there are any parsing errors, then the server MUST return a SOAP fault message. If an error occurs during the execution in the upper layer, the upper layer SHOULD return the error in a **SqlMessage** element as part of the **SqlResultStream** whenever possible. The upper layer MAY determine that it cannot return the error in a **SqlMessage** element and simply terminate the connection.

3.1.4.2.2.3 sqlbatchResponse

This element structure is defined by the WSDL message sqlbatchSoapOut as described in section [2.2.2.2](#).

When the upper layer finishes execution, the upper layer provides the data to be sent back to the client. The server sends the SOAP message response by using the **sqlbatchResponse** element. The result of the query execution is returned in the **sqlbatchResult** element, in accordance with the **SqlResultStream** complex type, while output parameters, if any, are returned in the **Parameters** element, in accordance with the **ArrayOfSqlParameter** complex type.

3.1.4.2.3 Complex Types

The following XML schema complex type definitions are specific to this operation.

3.1.4.2.3.1 SqlResultStream

When sending a response, the server generates the XML as defined by this complex type as part of the **sqlbatchResponse** element to return the query execution result.

3.1.4.2.3.2 ArrayOfSqlParameter

In the SOAP Body Parse state, when the server encounters this complex type, the server defines the list of parameters as specified by this complex type.

3.1.4.2.4 Simple Types

The following XML schema simple type definitions are specific to this operation.

3.1.4.2.4.1 ParameterDirection

When the server is processing each **SqlParameter** element, it may encounter this simple type. It defines whether the parameter is an input-only parameter or an input/output parameter. Refer to the **SqlParameter.direction** element in section [2.2.4.1.1](#) for details.

3.1.4.2.5 Attributes

None.

3.1.4.2.6 Groups

None.

3.1.4.2.7 Attribute Groups

None.

3.1.4.3 Authentication

For the sequence of SOAP messages defined by this protocol, each SOAP message sent from the client to the server MUST have a valid authentication token in the HTTP header in the format defined by [\[RFC2616\]](#). Any message exchanges that are necessary to validate the authentication token are in accordance with [\[RFC4559\]](#) and [\[RFC2617\]](#). This protocol does not extend or enhance these RFC specifications.

This protocol does limit the use of Basic authentication, as defined by [\[RFC2617\]](#), to connections established using HTTPS.

In addition to specifying the authentication token in the HTTP headers, the client MAY also use the [\[WSSE-UsernameToken\]](#) SOAP header to specify the name and password of a SQL Server user account. If found, the server will validate the user credentials specified within the [WSSE-UsernameToken] header. If the token is not found, the server will use the user credentials specified within the HTTP Authorization header to log in to SQL Server.

3.1.5 Timer Events

As mentioned in section [3.1.2](#), the server SHOULD implement an authentication timer. This timer SHOULD have a timeout of 30 seconds. This timer is triggered to start when the initial client SOAP message request with a valid HTTP authentication BLOB is received by the server. The timer is stopped and reset when the HTTP authentication meets the requirements as specified by [\[RFC2616\]](#). If the timer starts before the HTTP authentication requirements are met, then the server will not return a response to the client and will close the connection.

The server SHOULD also implement a session timer. This timer SHOULD have a default timeout of 60 seconds, but it MAY be configured to allow for a longer default timeout value. The client application MAY choose to request a different timeout value. However, the shorter timeout, from either the system default or the request by the client application, MUST be used as the timeout value for this timer. This timer is triggered to start every time the server sends a session-based response to the client. The timer is stopped and reset when the client sends another session-based request to the same session. When the timeout expires, the server MUST terminate the session and close the connection.

3.1.6 Other Local Events

When there is a failure in under-layers, such as the network, the server SHOULD terminate the HTTP connection without sending any response to the client. An under-layer failure MAY be triggered by a network failure. It MAY also be triggered by the termination action from the client, which could be communicated to the server stack by the under-layer.

3.2 Client Details

None.

3.2.1 Abstract Data Model

None.

3.2.2 Timers

None.

3.2.3 Initialization

None.

3.2.4 Message Processing Events and Sequencing Rules

None.

3.2.5 Timer Events

None.

3.2.6 Other Local Events

None.

Preliminary

4 Protocol Examples

4.1 SOAP Requests

4.1.1 SOAP Request with No Parameters

This example shows a request that does not specify the optional **Parameters** element.

```
POST /SqlBatch HTTP/1.1
Host: testServer
Content-Type: application/xml

<SOAP-ENV:Envelope
xmlns:SOAP-ENV="http://schemas.xmlsoap.org/soap/envelope/"
xmlns:sql="http://schemas.microsoft.com/sqlserver/2004/SQL"
  <SOAP-ENV:Body>
    <sql:sqlbatch>
      <sql:BatchCommands>
        SELECT @@version
      </sql:BatchCommands>
    </sql:sqlbatch>
  </SOAP-ENV:Body>
</SOAP-ENV:Envelope>
```

4.1.2 SOAP Request with SOAPAction Header

This example shows a request that specifies the SOAPAction header.

```
POST /SqlBatch HTTP/1.1
Host: testServer
Content-Type: application/xml
SOAPAction:
"http://schemas.microsoft.com/sqlserver/2004/SQL/sqlbatch"
<SOAP-ENV:Envelope
xmlns:SOAP-ENV="http://schemas.xmlsoap.org/soap/envelope/"
xmlns:sql="http://schemas.microsoft.com/sqlserver/2004/SQL"
  <SOAP-ENV:Body>
    <sql:sqlbatch>
      <sql:BatchCommands>
        SELECT @@version
      </sql:BatchCommands>
    </sql:sqlbatch>
  </SOAP-ENV:Body>
</SOAP-ENV:Envelope>
```

4.1.3 SOAP Request with Parameters

This example shows a request that specifies the **Parameters** element.

```
POST /SqlBatch HTTP/1.1
Content-Type: text/xml
Host: testServer
SOAPAction:
```

```

"http://schemas.microsoft.com/sqlserver/2004/SOAPsqlbatch"
<SOAP-ENV:Envelope xmlns:SOAP-
ENV="http://schemas.xmlsoap.org/soap/envelope/"
xmlns:sqlparam="http://schemas.microsoft.com/sqlserver/2004/
SOAP/types/SqlParameter"
xmlns:sql="http://schemas.microsoft.com/sqlserver/2004/SOAP">
  <SOAP-ENV:Body>
    <sql:sqlbatch>
      <sql:BatchCommands>select @param1 as 'col1',
@param2 as
'col2'</sql:BatchCommands>
      <sql:Parameters>
        <sqlparam:SqlParameter name="param1"
direction="InputOutput" sqlDbType="NVarChar" maxLength="10">
          <sqlparam:Value>Hello World</sqlparam:Value>
        </sqlparam:SqlParameter>
        <sqlparam:SqlParameter name="param2"
direction="Input" sqlDbType="VarChar">
          <sqlparam:Value>hello</sqlparam:Value>
        </sqlparam:SqlParameter>
      </sql:Parameters>
    </sql:sqlbatch>
  </SOAP-ENV:Body>
</SOAP-ENV:Envelope>

```

4.1.4 SOAP Request with Additional Parameter Attributes

This example shows a request that specifies the parameter value instance type information.

```

POST /SqlBatch HTTP/1.1
Content-Type: text/xml
Host: testServer
<SOAP-ENV:Envelope
xmlns:SOAP-ENV="http://schemas.xmlsoap.org/soap/envelope/"
xmlns:sqlparam="http://schemas.microsoft.com/sqlserver/2004/
SOAP/types/SqlParameter"
xmlns:sqltypes=
"http://schemas.microsoft.com/sqlserver/2004/sqltypes"
xmlns:xsi="http://www.w3.org/2001/XMLSchema-instance"
xmlns:sql="http://schemas.microsoft.com/sqlserver/2004/SOAP">
  <SOAP-ENV:Body>
    <sql:sqlbatch>
      <sql:BatchCommands>select @param1 as 'col1',
@param2 as
'col2'</sql:BatchCommands>
      <sql:Parameters>
        <sqlparam:SqlParameter name="param1"
direction="InputOutput" sqlDbType="NVarChar" maxLength="10">
          <sqlparam:Value xsi:type="sqltypes:varchar"
sqltypes:maxLength="15">Hello World</sqlparam:Value>
        </sqlparam:SqlParameter>
        <sqlparam:SqlParameter name="param2"
direction="Input" maxLength="5" sqlDbType="VarChar">
          <sqlparam:Value
xsi:type="sqltypes:int">100</sqlparam:Value>
        </sqlparam:SqlParameter>
      </sql:Parameters>
    </sql:sqlbatch>
  </SOAP-ENV:Body>
</SOAP-ENV:Envelope>

```

```
    </sql:sqlbatch>
  </SOAP-ENV:Body>
</SOAP-ENV:Envelope>
```

4.1.5 SOAP Request with sqlSession.initiate

This example shows a request to initiate a session.

```
POST /SqlBatch HTTP/1.1
Host: testServer
Content-Type: application/xml

<SOAP-ENV:Envelope
xmlns:SOAP-ENV="http://schemas.xmlsoap.org/soap/envelope/"
xmlns:sql="http://schemas.microsoft.com/sqlserver/2004/SOAP">
  <SOAP-ENV:Header
xmlns:sqloptions=
"http://schemas.microsoft.com/sqlserver/
2004/SOAP/Options">
    <sqloptions:sqlSession initiate="true" timeout="12"/>
  </SOAP-ENV:Header>
  <SOAP-ENV:Body>
    <sql:sqlbatch>
      <sql:BatchCommands>
        Set language French
      </sql:BatchCommands>
    </sql:sqlbatch>
  </SOAP-ENV:Body>
</SOAP-ENV:Envelope>
```

4.1.6 SOAP Request with sqlSession.sessionId

This example shows a request specifying a query session to join.

```
POST /SqlBatch HTTP/1.1
Host: testServer
Content-Type: application/xml

<SOAP-ENV:Envelope
xmlns:SOAP-ENV="http://schemas.xmlsoap.org/soap/envelope/"
xmlns:sql="http://schemas.microsoft.com/sqlserver/2004/SOAP">
  <SOAP-ENV:Header xmlns:sqloptions="http://schemas.microsoft.com/sqlserver/
2004/SOAP/Options">
    <sqloptions:sqlSession sessionId="P/Z+b7K3+UW/Xcc7ync2Yg==" />
  </SOAP-ENV:Header>
  <SOAP-ENV:Body>
    <sql:sqlbatch>
      <sql:BatchCommands>
        SELECT @@language
      </sql:BatchCommands>
    </sql:sqlbatch>
  </SOAP-ENV:Body>
</SOAP-ENV:Envelope>
```

4.1.7 SOAP Request with sqlSession.terminate

This example shows a request to terminate a session.

```
POST /SqlBatch HTTP/1.1
Host: testServer
Content-Type: application/xml

<SOAP-ENV:Envelope
xmlns:SOAP-ENV="http://schemas.xmlsoap.org/soap/envelope/"
xmlns:sql="http://schemas.microsoft.com/sqlserver/2004/SOAP">
  <SOAP-ENV:Header
xmlns:sqloptions="http://schemas.microsoft.com/sqlserver/
2004/SOAP/Options">
    <sqloptions:sqlSession terminate="true"
sessionId="P/Z+b7K3+UW/Xcc7ync2Yg==" />
  </SOAP-ENV:Header>
  <SOAP-ENV:Body>
    <sql:sqlbatch>
      <sql:BatchCommands>
        SELECT @@language
      </sql:BatchCommands>
    </sql:sqlbatch>
  </SOAP-ENV:Body>
</SOAP-ENV:Envelope>
```

4.2 SOAP Responses

4.2.1 SOAP Response with No Output Parameters

This example shows a response that does not specify any output for **sqlParameters** elements.

```
HTTP/1.1 200 OK
Transfer-Encoding: chunked
Content-Type: text/xml; charset=utf-8
<?xml version="1.0" encoding="utf-8"?>
<SOAP-ENV:Envelope xml:space="preserve"
xmlns:xsd="http://www.w3.org/2001/XMLSchema"
xmlns:xsi="http://www.w3.org/2001/XMLSchema-instance"
xmlns:SOAP-ENV="http://schemas.xmlsoap.org/soap/envelope/"
xmlns:sql="http://schemas.microsoft.com/sqlserver/2004/SOAP"
xmlns:sqlsoaptypes="http://schemas.microsoft.com/sqlserver/
2004/SOAP/types"
xmlns:sqlrowcount="http://schemas.microsoft.com/sqlserver/
2004/SOAP/types/SqlRowCount"
xmlns:sqlmessage="http://schemas.microsoft.com/sqlserver/
2004/SOAP/types/SqlMessage"
xmlns:sqlresultstream="http://schemas.microsoft.com/sqlserver/
2004/SOAP/types/SqlResultStream"
xmlns:sqltransaction="http://schemas.microsoft.com/sqlserver/
2004/SOAP/types/SqlTransaction"
xmlns:sqltypes="http://schemas.microsoft.com/
sqlserver/2004/sqltypes"
xmlns:msdata="urn:schemas-microsoft-com:xml-msdata">
  <SOAP-ENV:Body>
    <sql:sqlbatchResponse>
```

```

    <sql:sqlbatchResult>
      <sqlresultstream:SqlRowSet
        xsi:type="sqlsoapatypes:SqlRowSet"
        msdata:UseDataSetSchemaOnly="true"
        msdata:UDTColumnValueWrapped="true">
        <xsd:schema targetNamespace="http://schemas.microsoft.com/sqlserver/
2004/sqltypes">
          <xsd:simpleType name="nvarchar">
            <xsd:restriction base="xsd:string">
            </xsd:restriction>
          </xsd:simpleType>
        </xsd:schema>
        <xsd:schema
targetNamespace="urn:schemas-microsoft-com:sql:SqlRowSet1"
elementFormDefault="qualified">
          <xsd:import
namespace="http://schemas.microsoft.com/sqlserver/2004/sqltypes">
          </xsd:import>
          <xsd:element name="SqlRowSet1"
msdata:IsDataSet="true"
msdata:DataSetNamespace="urn:schemas-microsoft-com:sql:SqlDataSet "
msdata:DataSetName="SqlDataSet">
            <xsd:complexType>
              <xsd:sequence>
                <xsd:element name="row" minOccurs="0"
maxOccurs="unbounded">
                  <xsd:complexType>
                    <xsd:sequence>
                      <xsd:element name="Column1" minOccurs="0"
sql:sqlColumnName="">
                        <xsd:simpleType>
                          <xsd:restriction base="sqltypes:nvarchar"
sqltypes:localeId="1033"
sqltypes:sqlCompareOptions="IgnoreCase IgnoreWidth"
sqltypes:sqlCollationVersion="2">
                            <xsd:maxLength value="300">
                            </xsd:maxLength>
                          </xsd:restriction>
                        </xsd:simpleType>
                      </xsd:element>
                    </xsd:sequence>
                  </xsd:complexType>
                </xsd:element>
              </xsd:sequence>
            </xsd:complexType>
          </xsd:element>
        </xsd:schema>
        <diffgr:diffgram
xmlns:diffgr="urn:schemas-microsoft-com:xml-diffgram-v1">
          <SqlRowSet1
xmlns="urn:schemas-microsoft-com:sql:SqlRowSet1">
            <row>
              <Column1>Microsoft
SQL Server 2008 (RTM) - 10.0.1600.22 (X64)
Jul 9 2008 14:17:44
Copyright (c) 1988-2008 Microsoft Corporation
Developer Edition (64-bit) on
Windows NT 6.1 &lt;X64&gt; (Build 7000: )
</Column1>

```

```

        </row>
      </SqlRowSet1>
    </diffgr:diffgram>
  </sqlresultstream:SqlRowSet>
  <sqlresultstream:SqlRowCount
xsi:type="sqlrowcount:SqlRowCount">
    <sqlrowcount:Count>1</sqlrowcount:Count>
  </sqlresultstream:SqlRowCount>
</sql:sqlbatchResult>
</sql:sqlbatchResponse>
</SOAP-ENV:Body>
</SOAP-ENV:Envelope>

```

4.2.2 SOAP Response with Output Parameters

This example shows a response that specifies output parameters in the **Parameters** element.

```

HTTP/1.1 200 OK
Transfer-Encoding: chunked
Content-Type: text/xml; charset=utf-8
<SOAP-ENV:Envelope xml:space="preserve"
xmlns:xsd="http://www.w3.org/2001/XMLSchema"
xmlns:xsi="http://www.w3.org/2001/XMLSchema-instance"
xmlns:SOAP-ENV="http://schemas.xmlsoap.org/soap/envelope/"
xmlns:sql="http://schemas.microsoft.com/sqlserver/2004/SOAP"
xmlns:sqlsoaptypes="http://schemas.microsoft.com/sqlserver/
2004/SOAP/types"
xmlns:sqlrowcount="http://schemas.microsoft.com/sqlserver/
2004/SOAP/types/SqlRowCount"
xmlns:sqlmessage="http://schemas.microsoft.com/sqlserver/
2004/SOAP/types/SqlMessage"
xmlns:sqlresultstream="http://schemas.microsoft.com/
sqlserver/2004/SOAP/types/SqlResultStream"
xmlns:sqltransaction="http://schemas.microsoft.com/
sqlserver/2004/SOAP/types/SqlTransaction"
xmlns:sqltypes="http://schemas.microsoft.com/sqlserver/
2004/sqltypes"
xmlns:msdata="urn:schemas-microsoft-com:xml-msdata">
  <SOAP-ENV:Body>
    <sql:sqlbatchResponse>
      <sql:sqlbatchResult>
        <sqlresultstream:SqlRowSet xsi:type="sqlsoaptypes:SqlRowSet"
msdata:UseDataSetSchemaOnly="true"
msdata:UDTColumnValueWrapped="true">
          <xsd:schema
targetNamespace="http://schemas.microsoft.com/sqlserver/
2004/sqltypes">
            <xsd:simpleType name="nvarchar">
              <xsd:restriction base="xsd:string">
            </xsd:restriction>
            </xsd:simpleType>
            <xsd:simpleType name="varchar">
              <xsd:restriction base="xsd:string">
            </xsd:restriction>
            </xsd:simpleType>
          </xsd:schema>
        </xsd:schema>
      </sqlresultstream:SqlRowSet>
    </sql:sqlbatchResult>
  </sql:sqlbatchResponse>
</SOAP-ENV:Body>
</SOAP-ENV:Envelope>

```

```

targetNamespace="urn:schemas-microsoft-com:sql:SqlRowSet1"
elementFormDefault="qualified">
  <xsd:import
namespace="http://schemas.microsoft.com/sqlserver/2004/sqltypes">
  </xsd:import>
  <xsd:element name="SqlRowSet1" msdata:IsDataSet="true"
msdata:DataSetNamespace="urn:schemas-microsoft-com:sql:SqlDataSet"
msdata:DataSetName="SqlDataSet">
    <xsd:complexType>
      <xsd:sequence>
        <xsd:element name="row" minOccurs="0"
maxOccurs="unbounded">
          <xsd:complexType>
            <xsd:sequence>
              <xsd:element name="col1" minOccurs="0">
                <xsd:simpleType>
                  <xsd:restriction base="sqltypes:nvarchar"
sqltypes:localeId="1033"
sqltypes:sqlCompareOptions="IgnoreCase IgnoreWidth"
sqltypes:sqlCollationVersion="2">
                    <xsd:maxLength value="10">
                      </xsd:maxLength>
                    </xsd:restriction>
                  </xsd:simpleType>
                </xsd:element>
                <xsd:element name="col2" minOccurs="0">
                  <xsd:simpleType>
                    <xsd:restriction base="sqltypes:varchar"
sqltypes:localeId="1033"
sqltypes:sqlCompareOptions="IgnoreCase IgnoreWidth"
sqltypes:sqlCollationVersion="2">
                      <xsd:maxLength value="1">
                        </xsd:maxLength>
                      </xsd:restriction>
                    </xsd:simpleType>
                  </xsd:element>
                </xsd:sequence>
              </xsd:complexType>
            </xsd:element>
          </xsd:sequence>
        </xsd:complexType>
      </xsd:element>
    </xsd:schema>
  <diffgr:diffgram
xmlns:diffgr="urn:schemas-microsoft-com:xml-diffgram-v1">
    <SqlRowSet1
xmlns="urn:schemas-microsoft-com:sql:SqlRowSet1">
      <row>
        <col1>Hello Worl</col1>
        <col2>h</col2>
      </row>
    </SqlRowSet1>
  </diffgr:diffgram>
</sqlresultstream:SqlRowSet>
<sqlresultstream:SqlRowCount
xsi:type="sqlrowcount:SqlRowCount">
  <sqlrowcount:Count>1</sqlrowcount:Count>
</sqlresultstream:SqlRowCount>
</sql:sqlbatchResult>

```

```

    <sql:Parameters xmlns:sqlparam="http://schemas.microsoft.com/
sqlserver/2004/SOAP/types/SqlParameter">
      <sqlparam:SqlParameter name="param1" sqlDbType="NVarChar"
direction="InputOutput" maxLength="10">
        <sqlparam:Value>Hello Worl</sqlparam:Value>
      </sqlparam:SqlParameter>
    </sql:Parameters>
  </sql:sqlbatchResponse>
</SOAP-ENV:Body>
</SOAP-ENV:Envelope>

```

4.2.3 SOAP Response With Additional Output Parameter Attributes

This example shows a response that specifies the parameter value instance type information.

```

HTTP/1.1 200 OK
Transfer-Encoding: chunked
Content-Type: text/xml; charset=utf-8
<SOAP-ENV:Envelope xml:space="preserve"
xmlns:xsd="http://www.w3.org/2001/XMLSchema"
xmlns:xsi="http://www.w3.org/2001/XMLSchema-instance"
xmlns:SOAP-ENV="http://schemas.xmlsoap.org/soap/envelope/"
xmlns:sql="http://schemas.microsoft.com/sqlserver/2004/SOAP"
xmlns:sqlsoaptypes="http://schemas.microsoft.com/sqlserver/
2004/SOAP/types"
xmlns:sqlrowcount="http://schemas.microsoft.com/sqlserver/
2004/SOAP/types/SqlRowCount"
xmlns:sqlmessage="http://schemas.microsoft.com/sqlserver/
2004/SOAP/types/SqlMessage"
xmlns:sqlresultstream="http://schemas.microsoft.com/sqlserver/
2004/SOAP/types/SqlResultStream"
xmlns:sqltransaction="http://schemas.microsoft.com/sqlserver/
2004/SOAP/types/SqlTransaction"
xmlns:sqltypes="http://schemas.microsoft.com/sqlserver/
2004/sqltypes" xmlns:msdata="urn:schemas-microsoft-com:xml-msdata">
  <SOAP-ENV:Body>
    <sql:sqlbatchResponse>
      <sql:sqlbatchResult>
        <sqlresultstream:SqlRowSet xsi:type="sqlsoaptypes:SqlRowSet"
msdata:UseDataSetSchemaOnly="true"
msdata:UDTColumnValueWrapped="true">
          <xsd:schema targetNamespace="http://schemas.microsoft.com/sqlserver/
2004/sqltypes">
            <xsd:simpleType name="nvarchar">
              <xsd:restriction base="xsd:string">
            </xsd:restriction>
            </xsd:simpleType>
            <xsd:simpleType name="varchar">
              <xsd:restriction base="xsd:string">
            </xsd:restriction>
            </xsd:simpleType>
          </xsd:schema>
        </xsd:schema
targetNamespace="urn:schemas-microsoft-com:sql:SqlRowSet1"
elementFormDefault="qualified">
          <xsd:import
namespace="http://schemas.microsoft.com/sqlserver/2004/sqltypes">

```



```

        </xsd:import>
        <xsd:element name="SqlRowSet1" msdata:IsDataSet="true"
msdata:DataSetNamespace="urn:schemas-microsoft-com:sql:SqlDataSet"
msdata:DataSetName="SqlDataSet">
          <xsd:complexType>
            <xsd:sequence>
              <xsd:element name="row" minOccurs="0"
maxOccurs="unbounded">
                <xsd:complexType>
                  <xsd:sequence>
                    <xsd:element name="col1" minOccurs="0">
                      <xsd:simpleType>
                        <xsd:restriction base="sqltypes:nvarchar"
sqltypes:localeId="1033"
sqltypes:sqlCompareOptions="IgnoreCase IgnoreWidth"
sqltypes:sqlCollationVersion="2">
                          <xsd:maxLength value="10">
                            </xsd:maxLength>
                          </xsd:restriction>
                        </xsd:simpleType>
                      </xsd:element>
                      <xsd:element name="col2" minOccurs="0">
                        <xsd:simpleType>
                          <xsd:restriction base="sqltypes:varchar"
sqltypes:localeId="1033"
sqltypes:sqlCompareOptions="IgnoreCase IgnoreWidth"
sqltypes:sqlCollationVersion="2">
                            <xsd:maxLength value="5">
                              </xsd:maxLength>
                            </xsd:restriction>
                          </xsd:simpleType>
                        </xsd:element>
                      </xsd:sequence>
                    </xsd:complexType>
                  </xsd:element>
                </xsd:sequence>
              </xsd:complexType>
            </xsd:element>
          </xsd:sequence>
        </xsd:complexType>
      </xsd:sequence>
    </xsd:element>
  </xsd:schema>
  <diffgr:diffgram
xmlns:diffgr="urn:schemas-microsoft-com:xml-diffgram-v1">
    <SqlRowSet1
xmlns="urn:schemas-microsoft-com:sql:SqlRowSet1">
      <row>
        <col1>Hello Worl</col1>
        <col2>100</col2>
      </row>
    </SqlRowSet1>
  </diffgr:diffgram>
</sqlresultstream:SqlRowSet>
<sqlresultstream:SqlRowCount
xsi:type="sqlrowcount:SqlRowCount">
  <sqlrowcount:Count>1</sqlrowcount:Count>
</sqlresultstream:SqlRowCount>
</sql:sqlbatchResult>
<sql:Parameters xmlns:sqlparam="http://schemas.microsoft.com/
sqlserver/2004/SOAP/types/SqlParameter">
  <sqlparam:SqlParameter name="param1" sqlDbType="NVarChar"
direction="InputOutput" maxLength="10">

```

```

        <sqlparam:Value xsi:type="sqltypes:varchar"
sqltypes:maxLength="15" sqltypes:localeId="1033"
sqltypes:sqlCompareOptions="IgnoreCase IgnoreWidth"
sqltypes:sqlCollationVersion="2">Hello Worl</sqlparam:Value>
        </sqlparam:SqlParameter>
    </sql:Parameters>
</sql:sqlbatchResponse>
</SOAP-ENV:Body>
</SOAP-ENV:Envelope>

```

4.2.4 SOAP Response to a Request with sqlSession.initiate

This example shows a response to an initiate session request.

```

HTTP/1.1 200 OK
Transfer-Encoding: chunked
Content-Type: text/xml; charset=utf-8
<SOAP-ENV:Envelope xml:space="preserve"
xmlns:xsd="http://www.w3.org/2001/XMLSchema"
xmlns:xsi="http://www.w3.org/2001/XMLSchema-instance"
xmlns:SOAP-ENV="http://schemas.xmlsoap.org/soap/envelope/"
xmlns:sql="http://schemas.microsoft.com/sqlserver/2004/SOAP"
xmlns:sqlsoaptypes="http://schemas.microsoft.com/sqlserver/
2004/SOAP/types" xmlns:sqlrowcount="http://schemas.microsoft.com/
sqlserver/2004/SOAP/types/SqlRowCount"
xmlns:sqlmessage="http://schemas.microsoft.com/sqlserver/
2004/SOAP/types/SqlMessage"
xmlns:sqlresultstream="http://schemas.microsoft.com/sqlserver/
2004/SOAP/types/SqlResultStream"
xmlns:sqltransaction="http://schemas.microsoft.com/sqlserver/
2004/SOAP/types/SqlTransaction"
xmlns:sqltypes="http://schemas.microsoft.com/sqlserver/2004/sqltypes"
xmlns:msdata="urn:schemas-microsoft-com:xml-msdata">
  <SOAP-ENV:Header xmlns:sqloptions="http://schemas.microsoft.com/
sqlserver/2004/SOAP/Options">
    <sqloptions:sqlSession sessionId="P/Z+b7K3+UW/Xcc7ync2Yg=="
timeout="202">
      </sqloptions:sqlSession>
    </SOAP-ENV:Header>
  <SOAP-ENV:Body>
    <sql:sqlbatchResponse>
      <sql:sqlbatchResult>
        </sql:sqlbatchResult>
      </sql:sqlbatchResponse>
    </SOAP-ENV:Body>
  </SOAP-ENV:Envelope>

```

4.2.5 SOAP Response to a Request with sqlSession.sessionId

This example shows a response to a session join request.

```

HTTP/1.1 200 OK
Transfer-Encoding: chunked
Content-Type: text/xml; charset=utf-8
<SOAP-ENV:Envelope xml:space="preserve"

```

```

xmlns:xsd="http://www.w3.org/2001/XMLSchema"
xmlns:xsi="http://www.w3.org/2001/XMLSchema-instance"
xmlns:SOAP-ENV="http://schemas.xmlsoap.org/soap/envelope/"
xmlns:sql="http://schemas.microsoft.com/sqlserver/2004/SOAP"
xmlns:sqlsoaptypes="http://schemas.microsoft.com/sqlserver/
2004/SOAP/types"
xmlns:sqlrowcount="http://schemas.microsoft.com/sqlserver/
2004/SOAP/types/SqlRowCount"
xmlns:sqlmessage="http://schemas.microsoft.com/sqlserver/
2004/SOAP/types/SqlMessage"
xmlns:sqlresultstream="http://schemas.microsoft.com/sqlserver/
2004/SOAP/types/SqlResultStream"
xmlns:sqltransaction="http://schemas.microsoft.com/sqlserver/
2004/SOAP/types/SqlTransaction"
xmlns:sqltypes="http://schemas.microsoft.com/sqlserver/
2004/sqltypes" xmlns:msdata="urn:schemas-microsoft-com:xml-msdata">
  <SOAP-ENV:Header
xmlns:sqloptions="http://schemas.microsoft.com/sqlserver/
2004/SOAP/Options">
  <sqloptions:sqlSession sessionId="P/Z+b7K3+UW/Xcc7ync2Yg==">
  </sqloptions:sqlSession>
  </SOAP-ENV:Header>
  <SOAP-ENV:Body>
  <sql:sqlbatchResponse>
  <sql:sqlbatchResult>
  <sqlresultstream:SqlRowset xsi:type="sqlsoaptypes:SqlRowset"
msdata:UseDataSetSchemaOnly="true"
msdata:UDTColumnValueWrapped="true">
  <xsd:schema
targetNamespace="http://schemas.microsoft.com/sqlserver/
2004/sqltypes">
  <xsd:simpleType name="nvarchar">
  <xsd:restriction base="xsd:string">
  </xsd:restriction>
  </xsd:simpleType>
  </xsd:schema>
  <xsd:schema
targetNamespace="urn:schemas-microsoft-com:sql:SqlRowset1"
elementFormDefault="qualified">
  <xsd:import
namespace="http://schemas.microsoft.com/sqlserver/2004/sqltypes">
  </xsd:import>
  <xsd:element name="SqlRowset1" msdata:IsDataSet="true"
msdata:DataSetNamespace="urn:schemas-microsoft-com:sql:SqlDataSet"
msdata:DataSetName="SqlDataSet">
  <xsd:complexType>
  <xsd:sequence>
  <xsd:element name="row" minOccurs="0"
maxOccurs="unbounded">
  <xsd:complexType>
  <xsd:sequence>
  <xsd:element name="Column1" minOccurs="0"
sql:sqlColumnName="">
  <xsd:simpleType>
  <xsd:restriction
base="sqltypes:nvarchar" sqltypes:localeId="1033"
sqltypes:sqlCompareOptions="IgnoreCase IgnoreWidth"
sqltypes:sqlCollationVersion="2">
  <xsd:maxLength value="128">

```

```

        </xsd:maxLength>
    </xsd:restriction>
</xsd:simpleType>
</xsd:element>
</xsd:sequence>
</xsd:complexType>
</xsd:element>
</xsd:sequence>
</xsd:complexType>
</xsd:element>
</xsd:schema>
<diffgr:diffgram
xmlns:diffgr="urn:schemas-microsoft-com:xml-diffgram-v1">
    <SqlResultSet
xmlns="urn:schemas-microsoft-com:sql:SqlResultSet1">
        <row>
            <Column1>Français</Column1>
        </row>
    </SqlResultSet>
</diffgr:diffgram>
</sqlresultstream:SqlResultSet>
<sqlresultstream:SqlRowCount
xsi:type="sqlrowcount:SqlRowCount">
    <sqlrowcount:Count>1</sqlrowcount:Count>
</sqlresultstream:SqlRowCount>
</sql:sqlbatchResult>
</sql:sqlbatchResponse>
</SOAP-ENV:Body>
</SOAP-ENV:Envelope>

```

4.2.6 SOAP Response to a Request with sqlSession.terminate

This example shows a response to a terminate session request.

```

HTTP/1.1 200 OK
Transfer-Encoding: chunked
Content-Type: text/xml; charset=utf-8
<SOAP-ENV:Envelope xml:space="preserve"
xmlns:xsd="http://www.w3.org/2001/XMLSchema"
xmlns:xsi="http://www.w3.org/2001/XMLSchema-instance"
xmlns:SOAP-ENV="http://schemas.xmlsoap.org/soap/envelope/"
xmlns:sql="http://schemas.microsoft.com/sqlserver/2004/SOAP"
xmlns:sqlsoaptypes="http://schemas.microsoft.com/sqlserver/
2004/SOAP/types"
xmlns:sqlrowcount="http://schemas.microsoft.com/sqlserver/
2004/SOAP/types/SqlRowCount"
xmlns:sqlmessage="http://schemas.microsoft.com/
sqlserver/2004/SOAP/types/SqlMessage"
xmlns:sqlresultstream="http://schemas.microsoft.com/
sqlserver/2004/SOAP/types/SqlResultStream"
xmlns:sqltransaction="http://schemas.microsoft.com/sqlserver/
2004/SOAP/types/SqlTransaction"
xmlns:sqltypes="http://schemas.microsoft.com/
sqlserver/2004/sqltypes"
xmlns:msdata="urn:schemas-microsoft-com:xml-msdata">
    <SOAP-ENV:Header
xmlns:sqloptions="http://schemas.microsoft.com/sqlserver/

```

```

2004/SOAP/Options">
  <sqloptions:sqlSession terminate="true"
sessionId="P/Z+b7K3+UW/Xcc7ync2Yg==">
  </sqloptions:sqlSession>
</SOAP-ENV:Header>
<SOAP-ENV:Body>
  <sql:sqlbatchResponse>
    <sql:sqlbatchResult>
      <sqlresultstream:SqlRowSet xsi:type="sqlsoaptypes:SqlRowSet"
msdata:UseDataSetSchemaOnly="true"
msdata:UDTColumnValueWrapped="true">
        <xsd:schema
targetNamespace="http://schemas.microsoft.com/sqlserver/
2004/sqltypes">
          <xsd:simpleType name="nvarchar">
            <xsd:restriction base="xsd:string">
              </xsd:restriction>
            </xsd:simpleType>
          </xsd:schema>
          <xsd:schema
targetNamespace="urn:schemas-microsoft-com:sql:SqlRowSet1"
elementFormDefault="qualified">
            <xsd:import namespace="http://schemas.microsoft.com/
sqlserver/2004/sqltypes">
              </xsd:import>
              <xsd:element name="SqlRowSet1" msdata:IsDataSet="true"
msdata:DataSetNamespace="urn:schemas-microsoft-com:sql:SqlDataSet"
msdata:DataSetName="SqlDataSet">
                <xsd:complexType>
                  <xsd:sequence>
                    <xsd:element name="row" minOccurs="0"
maxOccurs="unbounded">
                      <xsd:complexType>
                        <xsd:sequence>
                          <xsd:element name="Column1" minOccurs="0"
sql:sqlColumnName="">
                            <xsd:simpleType>
                              <xsd:restriction
base="sqltypes:nvarchar"
sqltypes:localeId="1033"
sqltypes:sqlCompareOptions="IgnoreCase IgnoreWidth"
sqltypes:sqlCollationVersion="2">
                                <xsd:maxLength value="128">
                                  </xsd:maxLength>
                                </xsd:restriction>
                              </xsd:simpleType>
                            </xsd:element>
                          </xsd:sequence>
                        </xsd:complexType>
                      </xsd:element>
                    </xsd:schema>
                  <diffgr:diffgram
xmlns:diffgr="urn:schemas-microsoft-com:xml-diffgram-v1">
                    <SqlRowSet1
xmlns="urn:schemas-microsoft-com:sql:SqlRowSet1">
                      <row>

```

```

        <Column1>Français</Column1>
    </row>
</SqlRowSet1>
</diffgr:diffgram>
</sqlresultstream:SqlRowSet>
<sqlresultstream:SqlRowCount
xsi:type="sqlrowcount:SqlRowCount">
    <sqlrowcount:Count>1</sqlrowcount:Count>
</sqlresultstream:SqlRowCount>
</sql:sqlbatchResult>
</sql:sqlbatchResponse>
</SOAP-ENV:Body>
</SOAP-ENV:Envelope>

```

4.2.7 SOAP Fault Response

This example shows a sample SOAP fault response.

```

HTTP/1.1 500 Internal Server Error
Transfer-Encoding: chunked
Content-Type: text/xml; charset=utf-8
<SOAP-ENV:Envelope xml:space="preserve"
xmlns:xsd="http://www.w3.org/2001/XMLSchema"
xmlns:xsi="http://www.w3.org/2001/XMLSchema-instance"
xmlns:SOAP-ENV="http://schemas.xmlsoap.org/soap/envelope/"
xmlns:sql="http://schemas.microsoft.com/sqlserver/2004/SOAP"
xmlns:sqlsoap="http://schemas.microsoft.com/sqlserver/
2004/SOAP/types"
xmlns:sqlrowcount="http://schemas.microsoft.com/sqlserver/
2004/SOAP/types/SqlRowCount"
xmlns:sqlmessage="http://schemas.microsoft.com/sqlserver/
2004/SOAP/types/SqlMessage"
xmlns:sqlresultstream="http://schemas.microsoft.com/sqlserver/
2004/SOAP/types/SqlResultStream"
xmlns:sqltransaction="http://schemas.microsoft.com/sqlserver/
2004/SOAP/types/SqlTransaction"
xmlns:sqltypes="http://schemas.microsoft.com/
sqlserver/2004/sqltypes"
xmlns:msdata="urn:schemas-microsoft-com:xml-msdata">
  <SOAP-ENV:Body>
    <SOAP-ENV:Fault
xmlns:sqlsoapfaultcode="http://schemas.microsoft.com/
sqlserver/2004/SOAP/SqlSoapFaultCode">
      <faultcode>SOAP-ENV:Client</faultcode>
      <faultstring>There was an error in the incoming
SOAP request packet: Client, SoapHeader,
SessionIdIsInvalid</faultstring>
      <faultactor>http://schemas.microsoft.com/sqlserver/
2004/SOAP</faultactor>
      <detail xmlns:SOAP-1_2-ENV="http://www.w3.org/
2003/05/soap-envelope">
        <SOAP-1_2-ENV:Code>
          <SOAP-1_2-ENV:Value>SOAP-1_2-ENV:Sender
</SOAP-1_2-ENV:Value>
          <SOAP-1_2-ENV:Subcode>
            <SOAP-1_2-
ENV:Value>sqlsoapfaultcode:SoapHeader</SOAP-1_2-ENV:Value>

```

```
    <SOAP-1_2-ENV:Subcode>
      <SOAP-1_2-
ENV:Value>sqlsoapfaultcode:SessionIdIsInvalid</SOAP-1_2-ENV:Value>
    </SOAP-1_2-ENV:Subcode>
  </SOAP-1_2-ENV:Subcode>
</SOAP-1_2-ENV:Code>
<SOAP-1_2-ENV:Reason>
  <SOAP-1_2-ENV:Text xml:lang="en-US">There was an error
in the incoming SOAP request packet: Sender, SoapHeader,
SessionIdIsInvalid</SOAP-1_2-ENV:Text>
  </SOAP-1_2-ENV:Reason>
  <SOAP-1_2-ENV:Node>http://server/endpointuri/
</SOAP-1_2-ENV:Node>
  <SOAP-1_2-
ENV:Role>http://schemas.microsoft.com/sqlserver/2004/SOAP</SOAP-
1_2-ENV:Role>
    <SOAP-1_2-ENV:Detail>
      </SOAP-1_2-ENV:Detail>
    </detail>
  </SOAP-ENV:Fault>
</SOAP-ENV:Body>
</SOAP-ENV:Envelope>
```

5 Security

5.1 Security Considerations for Implementers

This protocol assumes the underlying HTTP is secured using HTTPS. All security considerations are covered in sections [2](#) and [3](#).

5.2 Index of Security Parameters

Security parameter	Section
WSSE-UsernameToken	3.1.4.3

6 Appendix A: Full WSDL

For ease of implementation the full WSDL is provided below.

```
<?xml version="1.0" encoding="utf-8"?>
<wsdl:definitions xmlns:wsdl="http://schemas.xmlsoap.org/wsdl/"
xmlns:soap="http://schemas.xmlsoap.org/wsdl/soap/"
xmlns:sqloptions=
"http://schemas.microsoft.com/sqlserver/2004/SOAP/Options"
xmlns:sql="http://schemas.microsoft.com/sqlserver/2004/SOAP"
xmlns:tns="http://tempuri.org" targetNamespace="http://tempuri.org">
  <wsdl:types>
    <xsd:schema xmlns:xsd="http://www.w3.org/2001/XMLSchema"
targetNamespace="http://schemas.microsoft.com/sqlserver/2004/sqltypes"
attributeFormDefault="qualified"
xmlns:sqltypes="http://schemas.microsoft.com/sqlserver/2004/sqltypes">
      <xsd:annotation>
        <xsd:documentation xml:lang="en">&#xd;&#xa;XML Schema
describing the base types to which SQL Server types are being
mapped. For more information, please consult the
documentation.&#xd;&#xa;&#xd;&#xa;
(c) Copyright 2004, Microsoft Corporation&#xd;&#xa;&#xd;&#xa;The
following schema for Microsoft SQL Server is presented in XML
format and is for informational purposes only. Microsoft Corporation
("Microsoft") may have trademarks, copyrights, or other
intellectual property rights covering subject matter in the
schema.&#xd;&#xa;&#xd;&#xa;Microsoft does not make any
representation or warranty regarding the schema or any product
or item developed based on the schema. The schema is provided to
you on an AS IS basis. Microsoft disclaims all express, implied
and statutory warranties, including but not limited to the implied
warranties of merchantability, fitness for a particular purpose,
and freedom from infringement. Without limiting the generality of
the foregoing, Microsoft does not make any warranty of any kind that
any item developed based on the schema, or any portion of the
schema, will not infringe any copyright, patent, trade secret, or
other intellectual property right of any person or entity in any
country. It is your responsibility to seek licenses for such
intellectual property rights where
appropriate.&#xd;&#xa;&#xd;&#xa;MICROSOFT SHALL NOT BE LIABLE
FOR ANY DAMAGES OF ANY KIND ARISING OUT OF OR IN CONNECTION WITH
THE USE OF THE SCHEMA, INCLUDING WITHOUT LIMITATION, ANY DIRECT,
INDIRECT, INCIDENTAL, CONSEQUENTIAL (INCLUDING ANY LOST PROFITS),
PUNITIVE OR SPECIAL DAMAGES, WHETHER OR NOT MICROSOFT HAS BEEN A
DVISED OF SUCH DAMAGES.&#xd;&#xa;</xsd:documentation>
      </xsd:annotation>
      <!-- Global types and attributes that can be used for schema
annotations. -->
      <xsd:simpleType name="sqlDbTypeEnum">
        <xsd:restriction base="xsd:string">
          <xsd:enumeration value="BigInt" />
          <xsd:enumeration value="Binary" />
          <xsd:enumeration value="Bit" />
          <xsd:enumeration value="Char" />
          <xsd:enumeration value="DateTime" />
          <xsd:enumeration value="Decimal" />
        </xsd:restriction>
      </xsd:simpleType>
    </xsd:schema>
  </wsdl:types>
</wsdl:definitions>
```

```

    <xsd:enumeration value="Float" />
    <xsd:enumeration value="Image" />
    <xsd:enumeration value="Int" />
    <xsd:enumeration value="Money" />
    <xsd:enumeration value="NChar" />
    <xsd:enumeration value="NText" />
    <!-- The sqlDbTypeEnum aligns with the
.Net System.Data.SqlDbType enum and does not provide an entry
for Numeric (which is mapped to Decimal). -->
    <xsd:enumeration value="NVarChar" />
    <xsd:enumeration value="Real" />
    <xsd:enumeration value="SmallDateTime" />
    <xsd:enumeration value="SmallInt" />
    <xsd:enumeration value="SmallMoney" />
    <xsd:enumeration value="Text" />
    <xsd:enumeration value="Timestamp" />
    <xsd:enumeration value="TinyInt" />
    <xsd:enumeration value="Udt" />
    <xsd:enumeration value="UniqueIdentifier" />
    <xsd:enumeration value="VarBinary" />
    <xsd:enumeration value="VarChar" />
    <xsd:enumeration value="Variant" />
    <xsd:enumeration value="Xml" />
  </xsd:restriction>
</xsd:simpleType>
<xsd:simpleType name="sqlCompareOptionsEnum">
  <xsd:restriction base="xsd:string">
    <xsd:enumeration value="Default" />
    <xsd:enumeration value="None" />
    <xsd:enumeration value="IgnoreCase" />
    <xsd:enumeration value="IgnoreNonSpace" />
    <xsd:enumeration value="IgnoreKanaType" />
    <xsd:enumeration value="IgnoreWidth" />
    <xsd:enumeration value="BinarySort" />
    <xsd:enumeration value="BinarySort2" />
  </xsd:restriction>
</xsd:simpleType>
<xsd:simpleType name="sqlCompareOptionsList">
  <xsd:list itemType="sqltypes:sqlCompareOptionsEnum" />
</xsd:simpleType>
<xsd:attribute default="NVarChar" name="sqlDbType"
type="sqltypes:sqlDbTypeEnum"/>
<xsd:attribute name="clrTypeName" type="xsd:string"/>
<xsd:attribute default="1" name="maxLength" type="xsd:long"/>
<xsd:attribute default="-1" name="localeId" type="xsd:int"/>
<xsd:attribute default="Default" name="sqlCompareOptions"
type="sqltypes:sqlCompareOptionsList"/>
<xsd:attribute default="0" name="sqlCollationVersion"
type="xsd:int"/>
<xsd:attribute default="0" name="sqlSortId" type="xsd:int"/>
<xsd:attribute default="0" name="scale"
type="xsd:unsignedByte"/>
<xsd:attribute default="18" name="precision"
type="xsd:unsignedByte"/>
<xsd:attribute name="xmlSchemaCollection" type="xsd:string"/>
<xsd:attribute name="sqlTypeAlias" type="xsd:string"/>
<!-- Global types that describe the base SQL types. -->
<xsd:simpleType name="char">
  <xsd:restriction base="xsd:string"/>

```

```

</xsd:simpleType>
<xsd:simpleType name="nchar">
  <xsd:restriction base="xsd:string"/>
</xsd:simpleType>
<xsd:simpleType name="varchar">
  <xsd:restriction base="xsd:string"/>
</xsd:simpleType>
<xsd:simpleType name="nvarchar">
  <xsd:restriction base="xsd:string"/>
</xsd:simpleType>
<xsd:simpleType name="text">
  <xsd:restriction base="xsd:string"/>
</xsd:simpleType>
<xsd:simpleType name="ntext">
  <xsd:restriction base="xsd:string"/>
</xsd:simpleType>
<xsd:simpleType name="varbinary">
  <xsd:restriction base="xsd:base64Binary"/>
</xsd:simpleType>
<xsd:simpleType name="binary">
  <xsd:restriction base="xsd:base64Binary"/>
</xsd:simpleType>
<xsd:simpleType name="image">
  <xsd:restriction base="xsd:base64Binary"/>
</xsd:simpleType>
<xsd:simpleType name="timestamp">
  <xsd:restriction base="xsd:base64Binary">
    <xsd:maxLength value="8"/>
  </xsd:restriction>
</xsd:simpleType>
<xsd:simpleType name="timestampNumeric">
  <!-- The timestampNumeric type supports a legacy format
of timestamp. -->
  <xsd:restriction base="xsd:long"/>
</xsd:simpleType>
<xsd:simpleType name="decimal">
  <xsd:restriction base="xsd:decimal"/>
</xsd:simpleType>
<xsd:simpleType name="numeric">
  <xsd:restriction base="xsd:decimal"/>
</xsd:simpleType>
<xsd:simpleType name="bigint">
  <xsd:restriction base="xsd:long" />
</xsd:simpleType>
<xsd:simpleType name="int">
  <xsd:restriction base="xsd:int"/>
</xsd:simpleType>
<xsd:simpleType name="smallint">
  <xsd:restriction base="xsd:short"/>
</xsd:simpleType>
<xsd:simpleType name="tinyint">
  <xsd:restriction base="xsd:unsignedByte"/>
</xsd:simpleType>
<xsd:simpleType name="bit">
  <xsd:restriction base="xsd:boolean"/>
</xsd:simpleType>
<xsd:simpleType name="float">
  <xsd:restriction base="xsd:double"/>
</xsd:simpleType>

```

```

<xsd:simpleType name="real">
  <xsd:restriction base="xsd:float"/>
</xsd:simpleType>
<xsd:simpleType name="datetime">
  <xsd:restriction base="xsd:dateTime">
    <xsd:pattern value="((00[1-9])|(00[1-9][0-9])|(0[1-9][0-9]{2})|([1-9][0-9]{3}))-(0[1-9])|(1[012])-(0[1-9])|([12][0-9])|(3[01])T((01[0-9])|(2[0-3]))(:[0-5][0-9]){2}(\.[0-9]{2}[037])?" />
    <xsd:maxInclusive value="9999-12-31T23:59:59.997"/>
    <xsd:minInclusive value="1753-01-01T00:00:00.000"/>
  </xsd:restriction>
</xsd:simpleType>
<xsd:simpleType name="smalldatetime">
  <xsd:restriction base="xsd:dateTime">
    <xsd:pattern value="((00[1-9])|(00[1-9][0-9])|(0[1-9][0-9]{2})|([1-9][0-9]{3}))-(0[1-9])|(1[012])-(0[1-9])|([12][0-9])|(3[01])T((01[0-9])|(2[0-3]))(:[0-5][0-9])(:00)" />
    <xsd:maxInclusive value="2079-06-06T23:59:00"/>
    <xsd:minInclusive value="1900-01-01T00:00:00"/>
  </xsd:restriction>
</xsd:simpleType>
<xsd:simpleType name="money">
  <xsd:restriction base="xsd:decimal">
    <xsd:totalDigits value="19"/>
    <xsd:fractionDigits value="4"/>
    <xsd:maxInclusive value="922337203685477.5807"/>
    <xsd:minInclusive value="-922337203685477.5808"/>
  </xsd:restriction>
</xsd:simpleType>
<xsd:simpleType name="smallmoney">
  <xsd:restriction base="xsd:decimal">
    <xsd:totalDigits value="10"/>
    <xsd:fractionDigits value="4"/>
    <xsd:maxInclusive value="214748.3647"/>
    <xsd:minInclusive value="-214748.3648"/>
  </xsd:restriction>
</xsd:simpleType>
<xsd:simpleType name="uniqueidentifier">
  <xsd:restriction base="xsd:string">
    <xsd:pattern value="([0-9a-fA-F]{8}-[0-9a-fA-F]{4}-[0-9a-fA-F]{4}-[0-9a-fA-F]{4}-[0-9a-fA-F]{12})|(\{[0-9a-fA-F]{8}-[0-9a-fA-F]{4}-[0-9a-fA-F]{4}-[0-9a-fA-F]{4}-[0-9a-fA-F]{12}\})" />
  </xsd:restriction>
</xsd:simpleType>
<!-- sql_variant directly maps to xsd:anyType -->
<xsd:complexType name="xml" mixed="true">
  <xsd:sequence>
    <xsd:any minOccurs="0" maxOccurs="unbounded"
processContents="skip" />
  </xsd:sequence>
</xsd:complexType>
<!-- the following type is for FOR XML binary URL
results only -->
<xsd:simpleType name="dbobject">
  <xsd:restriction base="xsd:anyURI" />
</xsd:simpleType>
</xsd:schema>
<xsd:schema xmlns:xsd="http://www.w3.org/2001/XMLSchema"
attributeFormDefault="qualified" elementFormDefault="qualified"

```

```

targetNamespace="http://schemas.microsoft.com/sqlserver/2004/SOAP/types">
  <xsd:annotation>
    <xsd:documentation xml:lang="en">&#xd;&#xa;(c) Copyright 2004,
Microsoft Corporation&#xd;&#xa;&#xd;&#xa;The following schema for
Microsoft SQL Server is presented in XML format and is for
informational purposes only. Microsoft Corporation ("Microsoft")
may have trademarks, copyrights, or other intellectual property
rights covering subject matter in the
schema.&#xd;&#xa;&#xd;&#xa;Microsoft does not make any
representation or warranty regarding the schema or any product
or item developed based on the schema. The schema is provided to
you on an AS IS basis. Microsoft disclaims all express, implied
and statutory warranties, including but not limited to the
implied warranties of merchantability, fitness for a particular
purpose, and freedom from infringement. Without limiting the
generality of the foregoing, Microsoft does not make any
warranty of any kind that any item developed based on the schema,
or any portion of the schema, will not infringe any copyright,
patent, trade secret, or other intellectual property right of
any person or entity in any country. It is your responsibility
to seek licenses for such intellectual property rights where
appropriate.&#xd;&#xa;&#xd;&#xa;MICROSOFT SHALL NOT BE LIABLE
FOR ANY DAMAGES OF ANY KIND ARISING OUT OF OR IN CONNECTION
WITH THE USE OF THE SCHEMA, INCLUDING WITHOUT LIMITATION, ANY
DIRECT, INDIRECT, INCIDENTAL, CONSEQUENTIAL (INCLUDING ANY
LOST PROFITS), PUNITIVE OR SPECIAL DAMAGES, WHETHER OR NOT
MICROSOFT HAS BEEN ADVISED OF SUCH
DAMAGES.&#xd;&#xa;</xsd:documentation>
  </xsd:annotation>
  <xsd:complexType name="SqlRowSet">
    <xsd:sequence maxOccurs="unbounded">
      <xsd:element ref="xsd:schema"/>
    <xsd:any/>
  </xsd:sequence>
</xsd:complexType>
<xsd:complexType name="SqlXml" mixed="true">
  <xsd:sequence>
    <xsd:any processContents="skip" />
  </xsd:sequence>
</xsd:complexType>
<xsd:simpleType name="SqlResultCode">
  <xsd:restriction base="xsd:int">
    <xsd:minInclusive value="0" />
  </xsd:restriction>
</xsd:simpleType>
  <xsd:attribute name="IsDataSetWithSchema" type="xsd:boolean" />
</xsd:schema>
  <xsd:schema xmlns:xsd="http://www.w3.org/2001/XMLSchema"
attributeFormDefault="qualified" elementFormDefault="qualified"
targetNamespace="http://schemas.microsoft.com/sqlserver/
2004/SOAP/types/SqlTransaction">
    <xsd:annotation>
      <xsd:documentation xml:lang="en">&#xd;&#xa;
(c) Copyright 2004, Microsoft Corporation&#xd;&#xa;&#xd;&#xa;The
following schema for Microsoft SQL Server is presented in XML
format and is for informational purposes only.
Microsoft Corporation ("Microsoft") may have trademarks, copyrights,
or other intellectual property rights covering subject matter in
the schema.&#xd;&#xa;&#xd;&#xa;Microsoft does not make any

```

representation or warranty regarding the schema or any product or item developed based on the schema. The schema is provided to you on an AS IS basis. Microsoft disclaims all express, implied and statutory warranties, including but not limited to the implied warranties of merchantability, fitness for a particular purpose, and freedom from infringement. Without limiting the generality of the foregoing, Microsoft does not make any warranty of any kind that any item developed based on the schema, or any portion of the schema, will not infringe any copyright, patent, trade secret, or other intellectual property right of any person or entity in any country. It is your responsibility to seek licenses for such intellectual property rights where appropriate. MICROSOFT SHALL NOT BE LIABLE FOR ANY DAMAGES OF ANY KIND ARISING OUT OF OR IN CONNECTION WITH THE USE OF THE SCHEMA, INCLUDING WITHOUT LIMITATION, ANY DIRECT, INDIRECT, INCIDENTAL, CONSEQUENTIAL (INCLUDING ANY LOST PROFITS), PUNITIVE OR SPECIAL DAMAGES, WHETHER OR NOT MICROSOFT HAS BEEN ADVISED OF SUCH DAMAGES.

```
</xsd:documentation>
</xsd:annotation>
<xsd:complexType name="SqlTransaction">
  <xsd:sequence minOccurs="1" maxOccurs="1">
    <xsd:element name="Descriptor" type="xsd:base64Binary" />
    <xsd:element name="Type">
      <xsd:simpleType>
        <xsd:restriction base="xsd:string">
          <xsd:enumeration value="Begin"/>
          <xsd:enumeration value="Commit"/>
          <xsd:enumeration value="Rollback"/>
          <xsd:enumeration value="EnlistDTC"/>
          <xsd:enumeration value="Defect"/>
        </xsd:restriction>
      </xsd:simpleType>
    </xsd:element>
  </xsd:sequence>
</xsd:complexType>
</xsd:schema>
<xsd:schema xmlns:xsd="http://www.w3.org/2001/XMLSchema"
attributeFormDefault="qualified" elementFormDefault="qualified"
targetNamespace="http://schemas.microsoft.com/sqlserver/2004/
SOAP/types/SqlRowCount">
  <xsd:annotation>
    <xsd:documentation xml:lang="en">&#xd;&#xa;
(c) Copyright 2004, Microsoft Corporation&#xd;&#xa;&#xd;&#xa;The
following schema for Microsoft SQL Server is presented in XML
format and is for informational purposes only. Microsoft Corporation
("Microsoft") may have trademarks, copyrights, or other intellectual
property rights covering subject matter in the
schema.&#xd;&#xa;&#xd;&#xa;Microsoft does not make any
representation or warranty regarding the schema or any product
or item developed based on the schema. The schema is provided to
you on an AS IS basis. Microsoft disclaims all express, implied
and statutory warranties, including but not limited to the implied
warranties of merchantability, fitness for a particular purpose,
and freedom from infringement. Without limiting the generality of
the foregoing, Microsoft does not make any warranty of any kind
that any item developed based on the schema, or any portion of
the schema, will not infringe any copyright, patent, trade
secret, or other intellectual property right of any person or
entity in any country. It is your responsibility to seek
```

licenses for such intellectual property rights where appropriate.

MICROSOFT SHALL NOT BE LIABLE FOR ANY DAMAGES OF ANY KIND ARISING OUT OF OR IN CONNECTION WITH THE USE OF THE SCHEMA, INCLUDING WITHOUT LIMITATION, ANY DIRECT, INDIRECT, INCIDENTAL, CONSEQUENTIAL (INCLUDING ANY LOST PROFITS), PUNITIVE OR SPECIAL DAMAGES, WHETHER OR NOT MICROSOFT HAS BEEN ADVISED OF SUCH DAMAGES.
</xsd:documentation>

```
</xsd:annotation>
<xsd:complexType name="SqlRowCount">
  <xsd:sequence minOccurs="1" maxOccurs="1">
    <xsd:element name="Count" type="xsd:long" />
  </xsd:sequence>
</xsd:complexType>
</xsd:schema>
<xsd:schema xmlns:xsd="http://www.w3.org/2001/XMLSchema"
xmlns:sqlmessage="http://schemas.microsoft.com/sqlserver/2004/
SOAP/types/SqlMessage" attributeFormDefault="qualified"
elementFormDefault="qualified"
targetNamespace="http://schemas.microsoft.com/sqlserver/
2004/SOAP/types/SqlMessage">
```

```
<xsd:annotation>
  <xsd:documentation xml:lang="en">&#xd;&#xa;
(c) Copyright 2004, Microsoft Corporation&#xd;&#xa;&#xd;&#xa;The
following schema for Microsoft SQL Server is presented in XML
format and is for informational purposes only. Microsoft Corporation
("Microsoft") may have trademarks, copyrights, or other intellectual
property rights covering subject matter in the
schema.&#xd;&#xa;&#xd;&#xa;Microsoft does not make any
representation or warranty regarding the schema or any product
or item developed based on the schema. The schema is provided to
you on an AS IS basis. Microsoft disclaims all express, implied
and statutory warranties, including but not limited to the
implied warranties of merchantability, fitness for a particular
purpose, and freedom from infringement. Without limiting the
generality of the foregoing, Microsoft does not make any warranty
of any kind that any item developed based on the schema, or any
portion of the schema, will not infringe any copyright, patent,
trade secret, or other intellectual property right of any person
or entity in any country. It is your responsibility to seek
licenses for such intellectual property rights where
appropriate.&#xd;&#xa;&#xd;&#xa;MICROSOFT SHALL NOT BE LIABLE FOR
ANY DAMAGES OF ANY KIND ARISING OUT OF OR IN CONNECTION WITH THE
USE OF THE SCHEMA, INCLUDING WITHOUT LIMITATION, ANY DIRECT,
INDIRECT, INCIDENTAL, CONSEQUENTIAL (INCLUDING ANY LOST PROFITS),
PUNITIVE OR SPECIAL DAMAGES, WHETHER OR NOT MICROSOFT HAS BEEN
ADVISED OF SUCH DAMAGES.&#xd;&#xa;</xsd:documentation>
```

```
</xsd:annotation>
<xsd:simpleType name="nonNegativeInteger">
  <xsd:restriction base="xsd:int">
    <xsd:minInclusive value="0" />
  </xsd:restriction>
</xsd:simpleType>
<xsd:complexType name="SqlMessage">
  <xsd:sequence minOccurs="1" maxOccurs="1">
    <xsd:element name="Class"
type="sqlmessage:nonNegativeInteger" />
    <xsd:element name="LineNumber"
type="sqlmessage:nonNegativeInteger" />
    <xsd:element name="Message" type="xsd:string" />
```

```

        <xsd:element name="Number"
type="sqlmessage:nonNegativeInteger" />
        <xsd:element name="Procedure"
type="xsd:string" minOccurs="0" />
        <xsd:element name="Server"
type="xsd:string" minOccurs="0" />
        <xsd:element name="Source" type="xsd:string" />
        <xsd:element name="State"
type="sqlmessage:nonNegativeInteger" />
    </xsd:sequence>
</xsd:complexType>
</xsd:schema>
<xsd:schema xmlns:xsd="http://www.w3.org/2001/XMLSchema"
xmlns:sqlsoaptypes="http://schemas.microsoft.com/sqlserver/
2004/SOAP/types"
xmlns:sqlmessage="http://schemas.microsoft.com/sqlserver/
2004/SOAP/types/SqlMessage"
xmlns:sqlrowcount="http://schemas.microsoft.com/sqlserver/
2004/SOAP/types/SqlRowCount"
xmlns:sqltransaction="http://schemas.microsoft.com/sqlserver/
2004/SOAP/types/SqlTransaction"
attributeFormDefault="qualified"
elementFormDefault="qualified"
targetNamespace="http://schemas.microsoft.com/sqlserver/
2004/SOAP/types/SqlResultStream">
    <xsd:annotation>
        <xsd:documentation xml:lang="en">&#xd;&#xa;
(c) Copyright 2004, Microsoft Corporation&#xd;&#xa;&#xd;&#xa;The
following schema for Microsoft SQL Server is presented in XML
format and is for informational purposes only. Microsoft Corporation
("Microsoft") may have trademarks, copyrights, or other intellectual
property rights covering subject matter in the
schema.&#xd;&#xa;&#xd;&#xa;Microsoft does not make any
representation or warranty regarding the schema or any product
or item developed based on the schema. The schema is provided to
you on an AS IS basis. Microsoft disclaims all express, implied
and statutory warranties, including but not limited to the
implied warranties of merchantability, fitness for a particular
purpose, and freedom from infringement. Without limiting the
generality of the foregoing, Microsoft does not make any warranty
of any kind that any item developed based on the schema, or any
portion of the schema, will not infringe any copyright, patent,
trade secret, or other intellectual property right of any person
or entity in any country. It is your responsibility to seek
licenses for such intellectual property rights where
appropriate.&#xd;&#xa;&#xd;&#xa;MICROSOFT SHALL NOT BE LIABLE
FOR ANY DAMAGES OF ANY KIND ARISING OUT OF OR IN CONNECTION WITH
THE USE OF THE SCHEMA, INCLUDING WITHOUT LIMITATION, ANY DIRECT,
INDIRECT, INCIDENTAL, CONSEQUENTIAL (INCLUDING ANY LOST PROFITS),
PUNITIVE OR SPECIAL DAMAGES, WHETHER OR NOT MICROSOFT HAS BEEN
ADVISED OF SUCH DAMAGES.&#xd;&#xa;</xsd:documentation>
    </xsd:annotation>
    <xsd:import namespace="http://schemas.microsoft.com/
sqlserver/2004/SOAP/types" />
    <xsd:import namespace="http://schemas.microsoft.com/
sqlserver/2004/SOAP/types/SqlMessage" />
    <xsd:import namespace="http://schemas.microsoft.com/
sqlserver/2004/SOAP/types/SqlRowCount" />
    <xsd:import namespace="http://schemas.microsoft.com/

```



```

sqlserver/2004/SOAP/types/SqlTransaction" />
  <xsd:complexType name="SqlResultStream">
    <xsd:choice minOccurs="1" maxOccurs="unbounded">
      <xsd:element name="SqlRowSet"
type="sqlsoaptypes:SqlRowSet" />
      <xsd:element name="SqlXml"
type="sqlsoaptypes:SqlXml" />
      <xsd:element name="SqlMessage"
type="sqlmessage:SqlMessage" />
      <xsd:element name="SqlRowCount"
type="sqlrowcount:SqlRowCount" />
      <xsd:element name="SqlResultCode"
type="sqlsoaptypes:SqlResultCode" />
      <xsd:element name="SqlTransaction"
type="sqltransaction:SqlTransaction" />
    </xsd:choice>
  </xsd:complexType>
</xsd:schema>
<xsd:schema xmlns:xsd="http://www.w3.org/2001/XMLSchema"
attributeFormDefault="qualified" elementFormDefault="qualified"
targetNamespace="http://schemas.microsoft.com/sqlserver/
2004/SOAP/Options">
  <xsd:annotation>
    <xsd:documentation xml:lang="en">&#xd;&#xa;
(c) Copyright 2004, Microsoft Corporation&#xd;&#xa;&#xd;&#xa;The
following schema for Microsoft SQL Server is presented in XML
format and is for informational purposes only.
Microsoft Corporation ("Microsoft") may have trademarks,
copyrights, or other intellectual property rights covering
subject matter in the schema.&#xd;&#xa;&#xd;&#xa;Microsoft
does not make any representation or warranty regarding the
schema or any product or item developed based on the schema.
The schema is provided to you on an AS IS basis. Microsoft
disclaims all express, implied and statutory warranties,
including but not limited to the implied warranties of
merchantability, fitness for a particular purpose, and
freedom from infringement. Without limiting the generality of
the foregoing, Microsoft does not make any warranty of any
kind that any item developed based on the schema, or any
portion of the schema, will not infringe any copyright, patent,
trade secret, or other intellectual property right of any person
or entity in any country. It is your responsibility to seek
licenses for such intellectual property rights where
appropriate.&#xd;&#xa;&#xd;&#xa;MICROSOFT SHALL NOT BE LIABLE
FOR ANY DAMAGES OF ANY KIND ARISING OUT OF OR IN CONNECTION
WITH THE USE OF THE SCHEMA, INCLUDING WITHOUT LIMITATION,
ANY DIRECT, INDIRECT, INCIDENTAL, CONSEQUENTIAL (INCLUDING ANY
LOST PROFITS), PUNITIVE OR SPECIAL DAMAGES, WHETHER OR NOT
MICROSOFT HAS BEEN ADVISED OF SUCH
DAMAGES.&#xd;&#xa;</xsd:documentation>
  </xsd:annotation>
  <xsd:element name="initialDatabase">
    <xsd:annotation>
      <xsd:documentation>Set initial database on
login.</xsd:documentation>
    </xsd:annotation>
    <xsd:complexType>
      <xsd:attribute name="value" type="xsd:string"
form="unqualified" use="required">

```

```

        <xsd:annotation>
            <xsd:documentation>The name of the initial database
to attach to.</xsd:documentation>
        </xsd:annotation>
    </xsd:attribute>
    <xsd:attribute name="optional" default="false"
type="xsd:boolean" form="unqualified">
        <xsd:annotation>
            <xsd:documentation>Whether the initial database is
optional or not.</xsd:documentation>
        </xsd:annotation>
    </xsd:attribute>
    <xsd:attribute name="filename" type="xsd:string"
form="unqualified">
        <xsd:annotation>
            <xsd:documentation>The filename of the database to
attach to.</xsd:documentation>
        </xsd:annotation>
    </xsd:attribute>
</xsd:complexType>
</xsd:element>
<xsd:element name="initialLanguage">
    <xsd:annotation>
        <xsd:documentation>Set initial language to
set.</xsd:documentation>
    </xsd:annotation>
    <xsd:complexType>
        <xsd:attribute name="value" type="xsd:string"
form="unqualified" use="required">
            <xsd:annotation>
                <xsd:documentation>The name of the initial
language to set.</xsd:documentation>
            </xsd:annotation>
        </xsd:attribute>
        <xsd:attribute name="optional" default="false"
type="xsd:boolean" form="unqualified">
            <xsd:annotation>
                <xsd:documentation>Whether the initial language
is optional or not.</xsd:documentation>
            </xsd:annotation>
        </xsd:attribute>
    </xsd:complexType>
</xsd:element>
<xsd:element name="environmentChangeNotifications">
    <xsd:annotation>
        <xsd:documentation>Receive environment change
notifications.</xsd:documentation>
    </xsd:annotation>
    <xsd:complexType>
        <xsd:attribute name="databaseChange" default="false"
type="xsd:boolean" form="unqualified">
            <xsd:annotation>
                <xsd:documentation>Receive notifications of database
changes.</xsd:documentation>
            </xsd:annotation>
        </xsd:attribute>
        <xsd:attribute name="languageChange" default="false"
type="xsd:boolean" form="unqualified">
            <xsd:annotation>

```

```

        <xsd:documentation>Receive notifications of language
changes.</xsd:documentation>
    </xsd:annotation>
</xsd:attribute>
    <xsd:attribute name="transactionBoundary" default="false"
type="xsd:boolean" form="unqualified">
    <xsd:annotation>
        <xsd:documentation>Receive notifications of
transaction boundaries.</xsd:documentation>
    </xsd:annotation>
</xsd:attribute>
</xsd:complexType>
</xsd:element>
<xsd:element name="applicationName">
    <xsd:annotation>
        <xsd:documentation>Set the application name for the
login.</xsd:documentation>
    </xsd:annotation>
    <xsd:complexType>
        <xsd:attribute name="value" type="xsd:string"
form="unqualified" use="required">
            <xsd:annotation>
                <xsd:documentation>The application name to set for
the login.</xsd:documentation>
            </xsd:annotation>
        </xsd:attribute>
    </xsd:complexType>
</xsd:element>
<xsd:element name="hostName">
    <xsd:annotation>
        <xsd:documentation>Set the host name for the
login.</xsd:documentation>
    </xsd:annotation>
    <xsd:complexType>
        <xsd:attribute name="value" type="xsd:string"
form="unqualified" use="required">
            <xsd:annotation>
                <xsd:documentation>The host name to set for the
login.</xsd:documentation>
            </xsd:annotation>
        </xsd:attribute>
    </xsd:complexType>
</xsd:element>
<xsd:element name="clientPID">
    <xsd:annotation>
        <xsd:documentation>Set the client process ID for the
login.</xsd:documentation>
    </xsd:annotation>
    <xsd:complexType>
        <xsd:attribute name="value" type="xsd:long"
form="unqualified" use="required">
            <xsd:annotation>
                <xsd:documentation>The client process ID to set
for the login.</xsd:documentation>
            </xsd:annotation>
        </xsd:attribute>
    </xsd:complexType>
</xsd:element>
<xsd:element name="clientNetworkID">

```

```

    <xsd:annotation>
      <xsd:documentation>Set the client network ID for the
login.</xsd:documentation>
    </xsd:annotation>
    <xsd:complexType>
      <xsd:attribute name="value" type="xsd:base64Binary"
form="unqualified" use="required">
        <xsd:annotation>
          <xsd:documentation>The client network ID to set for
the login.</xsd:documentation>
        </xsd:annotation>
      </xsd:attribute>
    </xsd:complexType>
  </xsd:element>
  <xsd:element name="clientInterface">
    <xsd:annotation>
      <xsd:documentation>Set the client interface for the
login.</xsd:documentation>
    </xsd:annotation>
    <xsd:complexType>
      <xsd:attribute name="value" type="xsd:string"
form="unqualified" use="required">
        <xsd:annotation>
          <xsd:documentation>The client interface to set
for the login.</xsd:documentation>
        </xsd:annotation>
      </xsd:attribute>
    </xsd:complexType>
  </xsd:element>
  <xsd:element name="notificationRequest">
    <xsd:annotation>
      <xsd:documentation>Requests query notifications
for the request.</xsd:documentation>
    </xsd:annotation>
    <xsd:complexType>
      <xsd:attribute name="notificationId" type="xsd:string"
form="unqualified" use="required">
        <xsd:annotation>
          <xsd:documentation>The notification
identifier.</xsd:documentation>
        </xsd:annotation>
      </xsd:attribute>
      <xsd:attribute name="deliveryService" type="xsd:string"
form="unqualified" use="required">
        <xsd:annotation>
          <xsd:documentation>The delivery
service.</xsd:documentation>
        </xsd:annotation>
      </xsd:attribute>
      <xsd:attribute name="timeout" type="xsd:integer"
form="unqualified">
        <xsd:annotation>
          <xsd:documentation>
The timeout value.</xsd:documentation>
        </xsd:annotation>
      </xsd:attribute>
    </xsd:complexType>
  </xsd:element>
  <xsd:element name="sqlSession">

```

```

    <xsd:annotation>
      <xsd:documentation>SQL Server SOAP
Session</xsd:documentation>
    </xsd:annotation>
    <xsd:complexType>
      <xsd:attribute name="initiate" default="false"
type="xsd:boolean" form="unqualified">
        <xsd:annotation>
          <xsd:documentation>Set to 'true' to request to
start a new session.</xsd:documentation>
        </xsd:annotation>
      </xsd:attribute>
      <xsd:attribute name="terminate" default="false"
type="xsd:boolean" form="unqualified">
        <xsd:annotation>
          <xsd:documentation>Set to 'true' to request
to terminate an existing session.</xsd:documentation>
        </xsd:annotation>
      </xsd:attribute>
      <xsd:attribute name="sessionId" type="xsd:base64Binary"
form="unqualified">
        <xsd:annotation>
          <xsd:documentation>The ID of a
session.</xsd:documentation>
        </xsd:annotation>
      </xsd:attribute>
      <xsd:attribute name="timeout" type="xsd:int"
form="unqualified">
        <xsd:annotation>
          <xsd:documentation>The timeout in seconds
before the session expires.</xsd:documentation>
        </xsd:annotation>
      </xsd:attribute>
      <xsd:attribute name="transactionDescriptor"
type="xsd:base64Binary" form="unqualified">
        <xsd:annotation>
          <xsd:documentation>The descriptor of a
transaction to enlist to.</xsd:documentation>
        </xsd:annotation>
      </xsd:attribute>
    </xsd:complexType>
  </xsd:element>
</xsd:schema>
<xsd:schema xmlns:xsd="http://www.w3.org/2001/XMLSchema"
xmlns:sqlparameter="http://schemas.microsoft.com/sqlserver/
2004/SOAP/types/SqlParameter"
xmlns:sqltypes="http://schemas.microsoft.com/sqlserver/
2004/sqltypes"
targetNamespace="http://schemas.microsoft.com/sqlserver/
2004/SOAP/types/SqlParameter" elementFormDefault="qualified"
attributeFormDefault="qualified">
  <xsd:annotation>
    <xsd:documentation xml:lang="en">&#xd;&#xa;
(c) Copyright 2004, Microsoft Corporation&#xd;&#xa;&#xd;&#xa;The
following schema for Microsoft SQL Server is presented in XML
format and is for informational purposes only.
Microsoft Corporation ("Microsoft") may have trademarks,
copyrights, or other intellectual property rights covering
subject matter in the schema.&#xd;&#xa;&#xd;&#xa;Microsoft

```

does not make any representation or warranty regarding the schema or any product or item developed based on the schema. The schema is provided to you on an AS IS basis. Microsoft disclaims all express, implied and statutory warranties, including but not limited to the implied warranties of merchantability, fitness for a particular purpose, and freedom from infringement. Without limiting the generality of the foregoing, Microsoft does not make any warranty of any kind that any item developed based on the schema, or any portion of the schema, will not infringe any copyright, patent, trade secret, or other intellectual property right of any person or entity in any country. It is your responsibility to seek licenses for such intellectual property rights where appropriate. MICROSOFT SHALL NOT BE LIABLE FOR ANY DAMAGES OF ANY KIND ARISING OUT OF OR IN CONNECTION WITH THE USE OF THE SCHEMA, INCLUDING WITHOUT LIMITATION, ANY DIRECT, INDIRECT, INCIDENTAL, CONSEQUENTIAL (INCLUDING ANY LOST PROFITS), PUNITIVE OR SPECIAL DAMAGES, WHETHER OR NOT MICROSOFT HAS BEEN ADVISED OF SUCH DAMAGES.

```

</xsd:documentation>
</xsd:annotation>
<xsd:import
namespace="http://schemas.microsoft.com/sqlserver/2004/sqltypes" />
<xsd:simpleType name="ParameterDirection">
  <xsd:restriction base="xsd:string">
    <xsd:enumeration value="Input" />
    <xsd:enumeration value="InputOutput" />
  </xsd:restriction>
</xsd:simpleType>
<xsd:complexType name="ArrayOfSqlParameter">
  <xsd:sequence>
    <xsd:element minOccurs="0" maxOccurs="unbounded"
name="SqlParameter" type="sqlparameter:SqlParameter" />
  </xsd:sequence>
</xsd:complexType>
<xsd:complexType name="SqlParameter">
  <xsd:sequence>
    <xsd:element minOccurs="1" maxOccurs="1" name="Value"
nillable="true" />
  </xsd:sequence>
  <xsd:attribute name="name" type="xsd:string" use="required"
form="unqualified" />
  <xsd:attribute default="NVarChar" name="sqlDbType"
type="sqltypes:sqlDbTypeEnum" use="optional" form="unqualified" />
  <xsd:attribute default="Input" name="direction"
type="sqlparameter:ParameterDirection" use="optional"
form="unqualified" />
  <xsd:attribute default="1" name="maxLength" type="xsd:long"
use="optional" form="unqualified" />
  <xsd:attribute default="18" name="precision"
type="xsd:unsignedByte" use="optional" form="unqualified" />
  <xsd:attribute default="0" name="scale"
type="xsd:unsignedByte" use="optional" form="unqualified" />
  <xsd:attribute default="" name="clrTypeName"
type="xsd:string" use="optional" form="unqualified" />
  <xsd:attribute default="Default" name="sqlCompareOptions"
type="sqltypes:sqlCompareOptionsList" use="optional"
form="unqualified" />
  <xsd:attribute default="-1" name="localeId" type="xsd:int"
use="optional" form="unqualified" />

```

```

        <xsd:attribute default="0" name="sqlCollationVersion"
type="xsd:int" use="optional" form="unqualified" />
        <xsd:attribute default="0" name="sqlSortId"
type="xsd:int" use="optional" form="unqualified" />
        <xsd:attribute default="" name="xmlSchemaCollection"
type="xsd:string" use="optional" form="unqualified" />
    </xsd:complexType>
</xsd:schema>
<xsd:schema xmlns:xsd="http://www.w3.org/2001/XMLSchema"
attributeFormDefault="qualified" elementFormDefault="qualified"
targetNamespace="http://schemas.microsoft.com/sqlserver/2004/SOAP"
xmlns:sqltypes="http://schemas.microsoft.com/sqlserver/
2004/sqltypes"
xmlns:sqlsoaptypes="http://schemas.microsoft.com/sqlserver/
2004/SOAP/types"
xmlns:sqlrowcount="http://schemas.microsoft.com/sqlserver/
2004/SOAP/types/SqlRowCount"
xmlns:sqlmessage="http://schemas.microsoft.com/sqlserver/
2004/SOAP/types/SqlMessage"
xmlns:sqlresultstream="http://schemas.microsoft.com/sqlserver/
2004/SOAP/types/SqlResultStream"
xmlns:sqlparameter="http://schemas.microsoft.com/sqlserver/
2004/SOAP/types/SqlParameter">
    <xsd:import
namespace="http://schemas.microsoft.com/sqlserver/
2004/SOAP/types/SqlResultStream"/>
    <xsd:import namespace="http://schemas.microsoft.com/sqlserver/
2004/SOAP/types/SqlParameter"/>
    <xsd:element name="sqlbatch">
        <xsd:complexType>
            <xsd:sequence>
                <xsd:element minOccurs="1" maxOccurs="1"
name="BatchCommands" type="xsd:string"/>
                <xsd:element minOccurs="0" maxOccurs="1"
name="Parameters" type="sqlparameter:ArrayOfSqlParameter"
nillable="true"/>
            </xsd:sequence>
        </xsd:complexType>
    </xsd:element>
    <xsd:element name="sqlbatchResponse">
        <xsd:complexType>
            <xsd:sequence>
                <xsd:element minOccurs="1" maxOccurs="1"
name="sqlbatchResult" type="sqlresultstream:SqlResultStream"
nillable="false"/>
                <xsd:element minOccurs="0" maxOccurs="1"
name="Parameters" type="sqlparameter:ArrayOfSqlParameter"
nillable="true"/>
            </xsd:sequence>
        </xsd:complexType>
    </xsd:element>
</xsd:schema>
</wsdl:types>
<wsdl:message name="sqlbatchSoapIn">
    <wsdl:part name="parameters" element="sql:sqlbatch"/>
</wsdl:message>
<wsdl:message name="sqlbatchSoapOut">
    <wsdl:part name="parameters" element="sql:sqlbatchResponse"/>
</wsdl:message>

```

```
<wsdl:portType name="Batch_EPSoap">
  <wsdl:operation name="sqlbatch">
    <wsdl:input message="tns:sqlbatchSoapIn"/>
    <wsdl:output message="tns:sqlbatchSoapOut"/>
  </wsdl:operation>
</wsdl:portType>
<wsdl:binding name="Batch_EPSoap" type="tns:Batch_EPSoap">
  <soap:binding transport="http://schemas.xmlsoap.org/soap/http"
style="document"/>
  <wsdl:operation name="sqlbatch">
    <soap:operation
soapAction="http://schemas.microsoft.com/sqlserver/
2004/SOAPsqlbatch" style="document"/>
    <wsdl:input>
      <soap:body use="literal"/>
    </wsdl:input>
    <wsdl:output>
      <soap:body use="literal"/>
    </wsdl:output>
  </wsdl:operation>
</wsdl:binding>
<wsdl:service name="Batch_EP">
  <wsdl:port name="Batch_EP" binding="tns:Batch_EPSoap">
    <soap:address
location="http://testServer/SqlBatch"></soap:address>
  </wsdl:port>
</wsdl:service>
</wsdl:definitions>
```


7 Appendix B: Product Behavior

The information in this specification is applicable to the following Microsoft products:

- Microsoft® SQL Server® 2005
- SQL Server 2005 with Service Pack 1 (SP1)
- SQL Server 2005 with SP2
- SQL Server 2005 with SP3
- Microsoft® SQL Server® 2008
- SQL Server 2008 with SP1
- Windows XP® operating system with SP2
- Windows XP with SP3
- Windows Server® 2003 operating system
- Windows Server® 2003 R2 operating system
- Windows Server 2003 with SP1
- Windows Server 2003 with SP2
- Windows Vista® operating system
- Windows Vista with SP1
- Windows Server® 2008 operating system
- Windows Server 2008 with SP2
- Windows® 7 operating system

Exceptions, if any, are noted below. Unless otherwise specified, any statement of optional behavior in this specification prescribed using the terms SHOULD or SHOULD NOT implies that the aforementioned Microsoft products' behavior is in accordance with the SHOULD or SHOULD NOT prescription. Unless otherwise specified, the term MAY implies that these Microsoft products do not follow the prescription.

[<1> Section 2.2.2.2.1.1.3](#): The possible values of **SqlMessage.Source** are listed in the following table.

Value	Meaning
Microsoft-SQL/9.0	This value is returned as part of SqlMessage.Source when the SqlMessage is generated by SQL Server 2005.
Microsoft-SQL/10.0	This value is returned as part of SqlMessage.Source when the SqlMessage is generated by Microsoft SQL Server 2008.

[<2> Section 2.2.4.1.1](#): The supported values for **SqlParameter.sqlCollationVersion** are listed in the following table.

Value	Meaning
0	SQL Server 2000 collation
1	SQL Server 2005 collation
2	SQL Server 2008 collation

<3> [Section 2.2.5.1](#): The meanings for BinarySort and BinarySort2 in **sqlCompareOptionsEnum** are listed in the following table.

Value	Meaning
BinarySort	Sorts and compares string data based on the bit patterns defined for each character that is compatible with SQL Server 2000 binary sorting.
BinarySort2	Sorts and compares string data based on code-point comparison semantics in SQL Server 2005.

8 Change Tracking

No table of changes is available. The document is either new or has had no changes since its last release.

Preliminary

9 Index

A

[Abstract data model](#) 41
[Applicability statement](#) 11
[applicationName](#) 18
[ArrayOfSqlParameter](#) 29
 [complex type](#) 29
[Authentication](#) 47

B

[Batch EPSoap server details](#) 41

C

[Capability negotiation](#) 11
[Change tracking](#) 83
[clientInterface](#) 18
[clientNetworkID](#) 18
[clientPID](#) 18
[Common message syntax](#) 12
Complex type
 [ArrayOfSqlParameter](#) 29
[Complex types](#) 29

D

[Directory service schema elements](#) 40

E

[Elements](#) 29
[environmentChangeNotifications](#) 18
Examples
 [protocol](#) 49

F

Fields
 [vendor-extensible](#) 11
[Full WSDL](#) 65

G

[Glossary](#) 6

H

[hostName](#) 19

I

[Informative references](#) 8
[initialDatabase](#) 19
[initialLanguage](#) 20
[Introduction](#) 6

M

Message syntax
 [common](#) 12
[Messages](#) 12
 [sqlbatchSoapIn and sqlbatchSoapOut](#) 13
 [transport](#) 12

N

[Namespaces](#) 12
[Normative references](#) 7
[notificationRequest](#) 20

P

[Prerequisites/preconditions](#) 10
[Product behavior](#) 81
[Protocol details](#) 41
[Protocol examples](#) 49
 [SOAP requests](#) 49
 [SOAP responses](#) 52
[Protocol overview \(synopsis\)](#) 8

R

References
 [informative](#) 8
 [normative](#) 7
 [normative and informative](#) 7
[Relationship to other protocols](#) 9

S

[Security](#) 64
[Session-based sqlbatch](#) 44
Simple type
 [sqlCompareOptionsList](#) 33
 [sqlTypes](#) 34
[Simple types](#) 33
[Single sqlbatch](#) 42
SOAP requests
 [examples](#) 49
SOAP responses
 [examples](#) 52
sqlbatch
 [session-based](#) 44
 [single](#) 42
sqlbatchSoapIn ([section 2.2.2](#) 13, [section 2.2.2.1](#) 13)
[sqlbatchSoapIn SOAP body](#) 13
[sqlbatchSoapIn SOAP headers](#) 14
sqlbatchSoapOut ([section 2.2.2](#) 13, [section 2.2.2.2](#) 21)
[sqlbatchSoapOut SOAP body](#) 22
[sqlbatchSoapOut SOAP header](#) 27
[sqlCompareOptionsList simple type](#) 33
[sqlDbTypeEnum](#) 38
[SqlMessage](#) 24
[SqlOptions](#) 12
[sqlParameter](#) 30

[SqlParameter.Value](#) 32
[SqlResultCode](#) 26
[SqlResultStream](#) 43
[SqlRowCount](#) 26
[SqlRowSet](#) 23
[sqlSession](#) ([section 2.2.2.1.2.10](#) 20, [section 3.1.4.2.2.1](#) 45)
[sqlSession SOAP header](#) 28
[SqlTransaction](#) 26
[sqlTypes simple type](#) 34
[SqlXml](#) 24
[Standards assignments](#) 11

T

[Tracking changes](#) 83
[Transport](#) 12

V

[Vendor-extensible fields](#) 11
[Versioning](#) 11

W

[WSDL](#) 65
[WSSE-UsernameToken](#) ([section 2.2.2.1](#) 13, [section 3.1.4.3](#) 47)